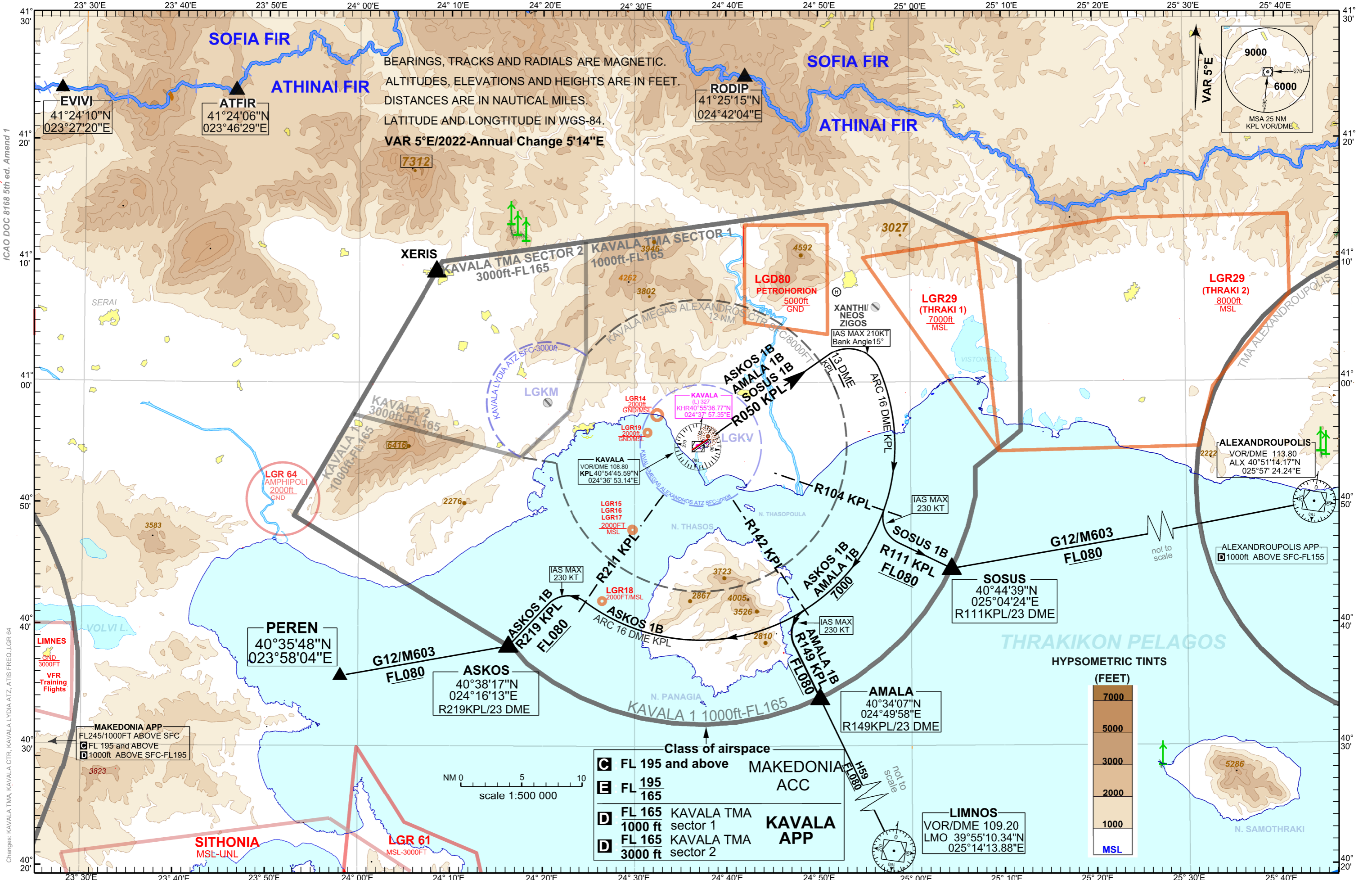


STANDARD DEPARTURE CHART INSTRUMENT (SID) - ICAO

TRANSITION ALTITUDE 7000 ft

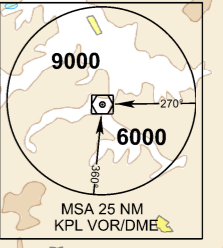
TWR 118.400 APP 124.650 ACC 133.575 ATIS 128.155

KAVALA/MEGAS ALEXANDROS VOR/DME RWY 05 ASKOS 1B, AMALA 1B, SOSUS 1B



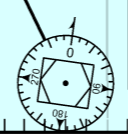
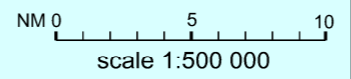
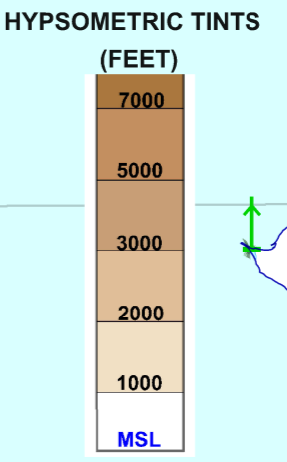
BEARINGS, TRACKS AND RADIALS ARE MAGNETIC.  
 ALTITUDES, ELEVATIONS AND HEIGHTS ARE IN FEET.  
 DISTANCES ARE IN NAUTICAL MILES.  
 LATITUDE AND LONGITUDE IN WGS-84.

VAR 5°E/2022-Annual Change 5'14"E



Class of airspace		MAKEDONIA
<b>C</b>	FL 195 and above	ACC
<b>E</b>	FL 195 165	
<b>D</b>	FL 165	KAVALA TMA sector 1
<b>D</b>	FL 165 3000 ft	KAVALA TMA sector 2

**KAVALA APP**



ICAO DOC 8168 5th ed. Amend 1

Changes: KAVALA TMA, KAVALA LYDIA ATZ, ATIS FREQ., LGR 64

**KAVALA/MEGAS ALEXANDROS AIRPORT**

**KPL VOR/DME SIDs RWY 05**

**SIDs: ASKOS 1B, AMALA1B, SOSUS 1B**

**GENERAL :**

When for these SIDs an altitude higher than the transition altitude is designated, then ATC unit shall specify an equivalent flight level.

	DESCRIPTION	MAX IAS /BANK ANGLE	MINIMUM CLIMB GRADIENT (PDG).	ALTITUDES
<b>ASKOS 1B</b>	Climb on R 050 KPL. At R 050/13DME Fix turn right, join Arc 16DME KPL. Crossing R 211 KPL turn left, intercept and follow R 219 KPL to ASKOS to join AWY G12/M603.	210 KT until turn at R 050/13 DME Fix completed / 15° Bank Angle. 230 KT until turn at R 211 KPL completed.		Cross R 142 KPL at 7000ft or above. Cross ASKOS at FL 080 or above.
<b>AMALA 1B</b>	Climb on R 050 KPL. At R 050/13DME Fix turn right, join Arc 16DME KPL. Crossing R 142 KPL turn left, intercept and follow R 149 KPL to AMALA to join AWY H59.	210 KT until turn at R 050/3 DME Fix completed / 15° Bank Angle. 230 KT until turn at R 142 KPL completed.		Cross R 142 KPL at 7000ft or above. Cross AMALA at FL 080 or above.
<b>SOSUS 1B</b>	Climb on R 050 KPL. At R 050/13DME Fix turn right, join Arc 16DME KPL. Crossing R 104 KPL turn left, intercept and follow R 111 KPL to SOSUS to join AWY G12/M603.	210 KT until turn at R 050/3 DME Fix completed / 15° Bank Angle. 230 KT until turn at R 104 KPL completed.	4.0% (243 ft/NM) up to FL080 for ATC purposes.	Cross SOSUS at FL 080 or above.