

HI-ILS or LOC Y RWY 6

LOC I-HST 109.9	APCH CRS 055°	Rwy Idg 11,201 TDZE Arprt Elev 5 6
---------------------------	-------------------------	---

AL-494 [USAF]

HOMESTEAD ARB (KHST)

RADAR or DME required.



MISSED APPROACH: Climb to 800 then climbing right turn to 3000 intercept HST TACAN R-180 to JOMIN and hold.

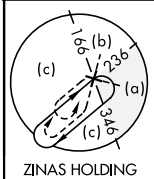
ATIS ★
132.275 269.9

APP CON
123.8 257.675

TOWER
133.45 279.55

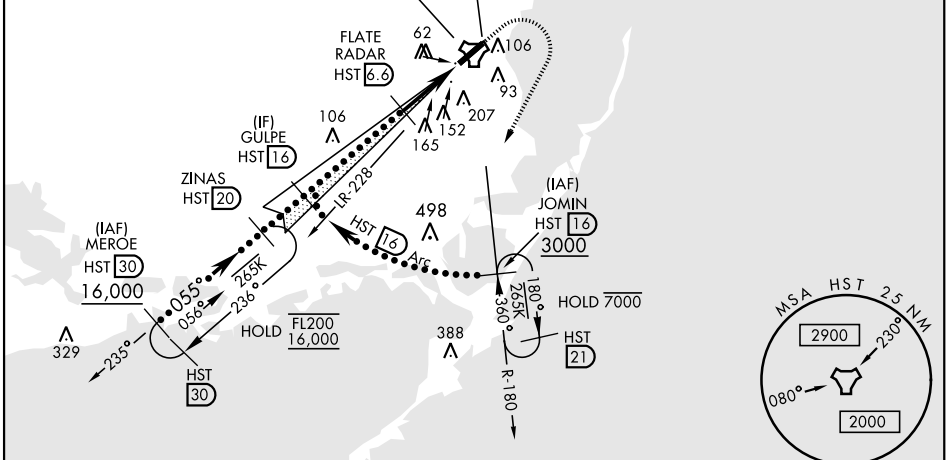
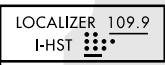
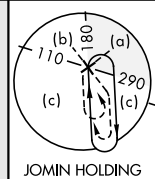
GND CON
121.75 275.8

CLNC DEL
121.75 275.8



CAUTION: Heliport and stadium 2.2 NM final Rwy 6 at Homestead ARB (stadium may be lit after dark).

Misled approach requires use of RNAV or ATC RADAR monitoring.



EMERG SAFE ALT 100 NM 15,100

	ELEV 6	TDZE 5																
	HIRL Rwy 6-24																	
	FAF to MAP 5.0 NM Knots 120 140 160 180 200 Min:Sec 2:30 2:09 1:53 1:40 1:30																	
<table border="1"> <thead> <tr> <th>CATEGORY</th> <th>C</th> <th>D</th> <th>E</th> </tr> </thead> <tbody> <tr> <td>S-ILS 6 *</td> <td>205/24</td> <td>200 (200-½)</td> <td></td> </tr> <tr> <td>S-LOC 6 **</td> <td>460/45</td> <td>455 (500-7%)</td> <td></td> </tr> <tr> <td>*** CIRCLING</td> <td>520-1½ 514 (600-1½)</td> <td>580-2 574 (600-2)</td> <td>780-2¾ 774 (800-2¾)</td> </tr> </tbody> </table>	CATEGORY	C	D	E	S-ILS 6 *	205/24	200 (200-½)		S-LOC 6 **	460/45	455 (500-7%)		*** CIRCLING	520-1½ 514 (600-1½)	580-2 574 (600-2)	780-2¾ 774 (800-2¾)		
CATEGORY	C	D	E															
S-ILS 6 *	205/24	200 (200-½)																
S-LOC 6 **	460/45	455 (500-7%)																
*** CIRCLING	520-1½ 514 (600-1½)	580-2 574 (600-2)	780-2¾ 774 (800-2¾)															

HI-ILS or LOC Y RWY 6

SE-3, 20 MAR 2025 to 17 APR 2025

SE-3, 20 MAR 2025 to 17 APR 2025