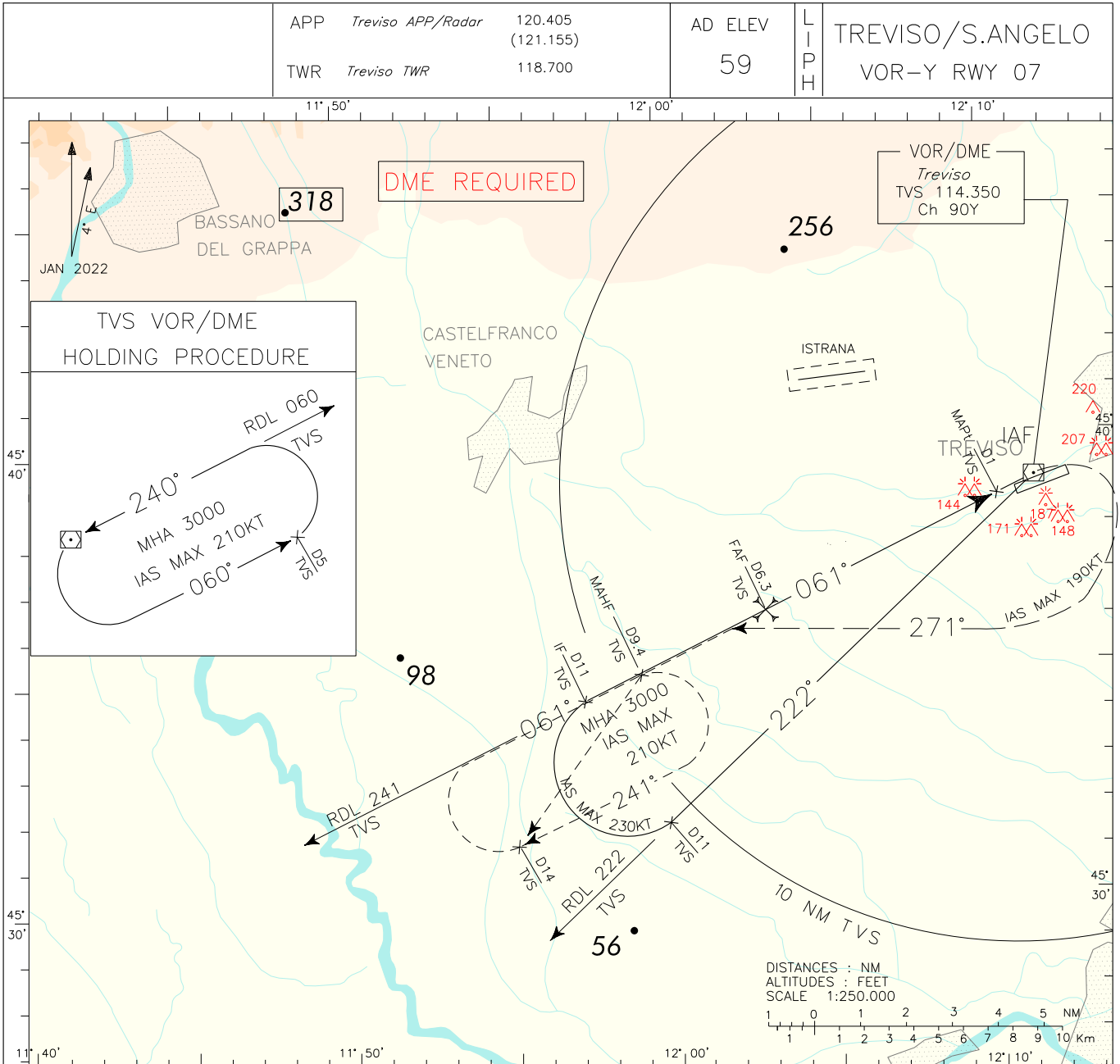


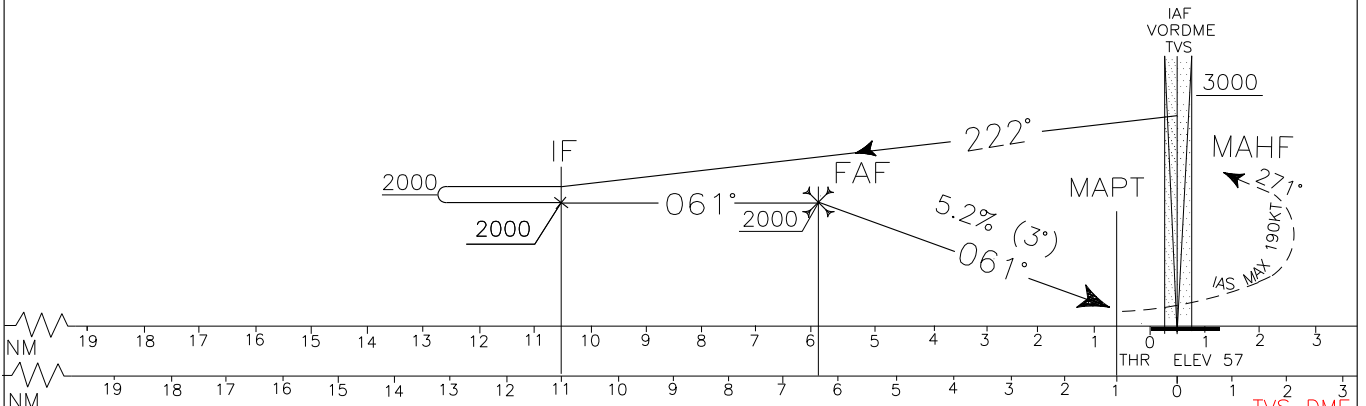
ICAO - INSTRUMENT APPROACH CHART

DOC.8168-ED.6-2014

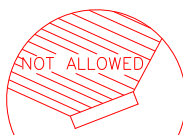
NEW PROCEDURE



TRANSITION ALT 6000 **MISSED APPROACH:** As soon as possible, turn right (TR 271° IAS MAX 190KT) climbing to 3000 ft to intercept and follow RDL 241 (TR 241°) TVS VOR to MAHF (RDL 241/9.4 NM TVS VOR/DME). Hold between D9.4 and D14 NM TVS DME inbound track 061°, IAS MAX 210KT, right turn.



OCA (OCH)		A	B	C	D	GS	FT PER MN	DME TVS	ALT (HGT)	MNM SECT ALT TVS VOR
STRAIGHT IN APPROACH	VOR RWY 07	510 (460)								
CIRCLING	South of RWY only	560 (510)	580 (530)	660 (610)	750 (700)	100	530	6.3	2000 (1943)	
						120	640	5	1269 (1212)	
						140	740	4	951 (894)	
						160	850	3	510 (453)	



CIRCLING SECTOR

Edited by AM-CIGA