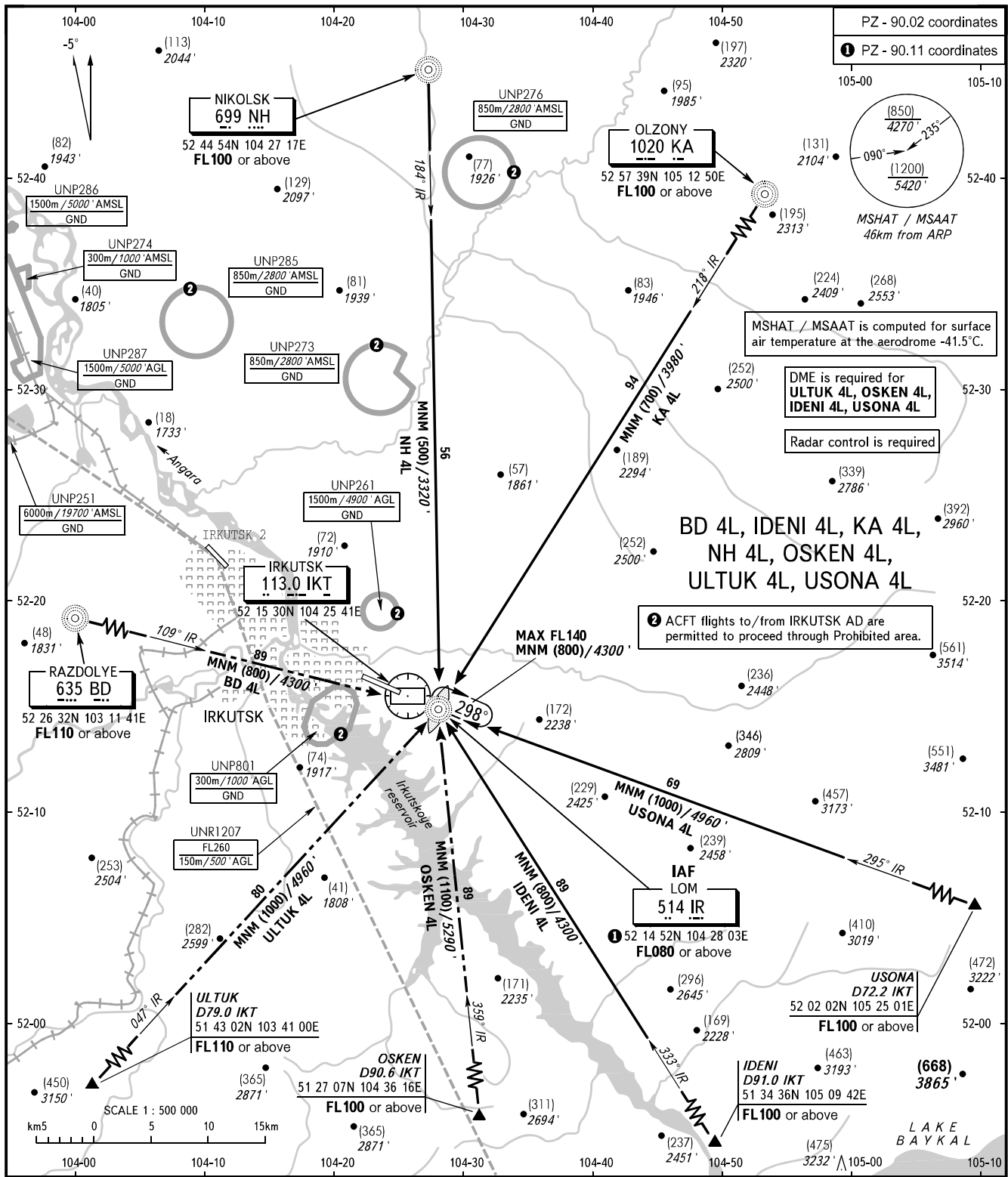


STANDARD ARRIVAL CHART
INSTRUMENT (STAR) ICAO

TRANSITION
LEVEL: FL070

IRKUTSK, RUSSIA
IRKUTSK
RWY 30



APPROACH	125.200	<p>WARNING:</p> <ol style="list-style-type: none"> When restricted area UNR1207 is active, BD 4L, OSKEN 4L, ULTUK 4L are AVBL after coordination with ATC. When UNP251 is active STAR BD 4L is AVBL after coordination with ATC.
RADAR	119.300	
TOWER	118.100	
BEARINGS AND TRACKS ARE MAG.	Alt set: -QFE(QNH on req); -mm(hPa on req).	
ALTITUDES IN FEET, HEIGHTS IN METRES		
ELEVATIONS IN METRES AND FEET		
DISTANCES IN KILOMETRES		