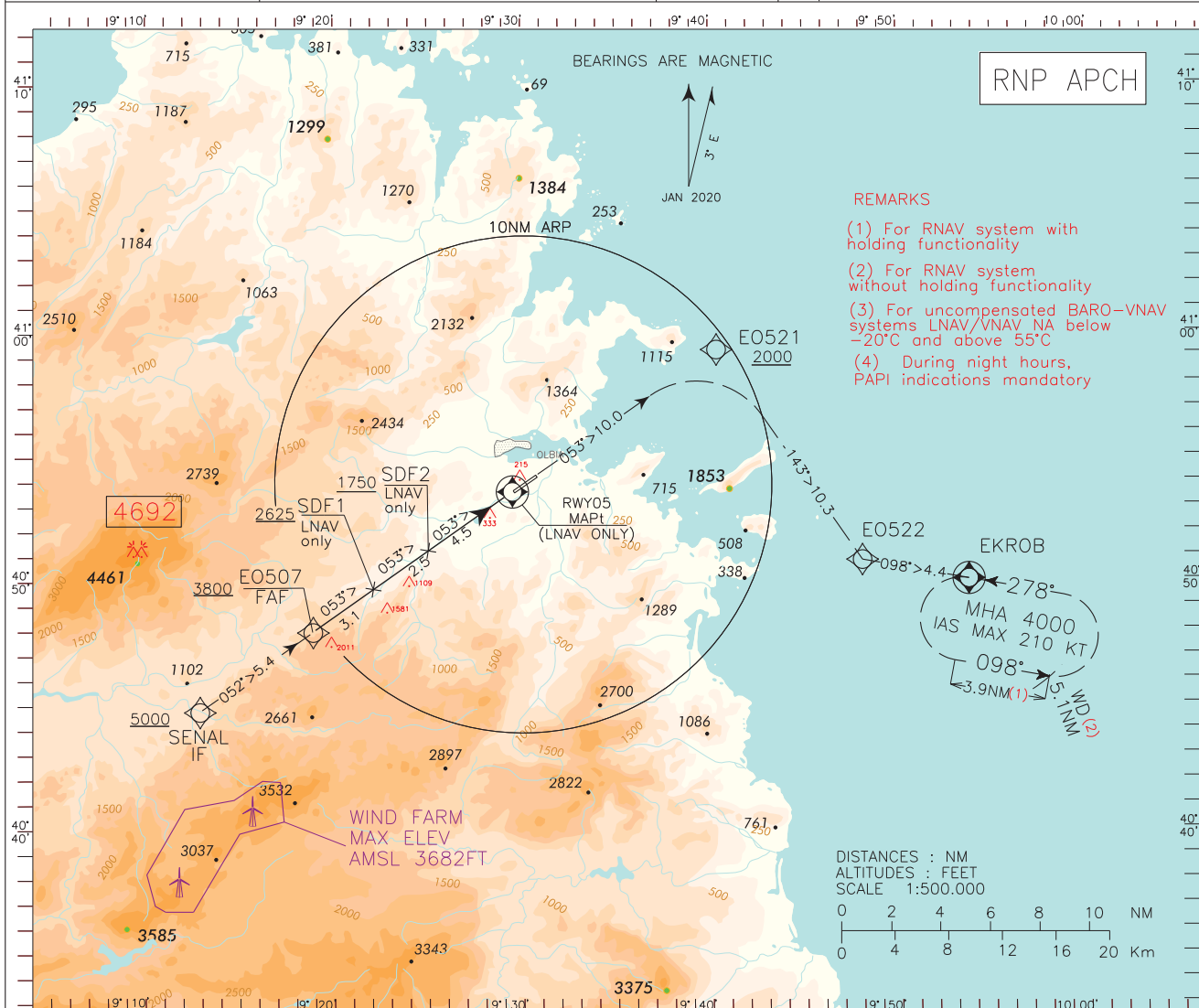


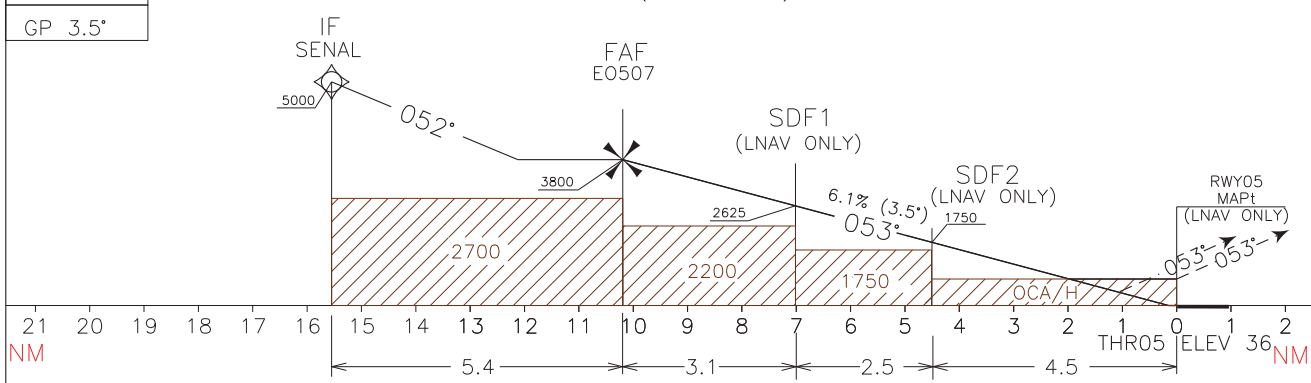
ICAO - INSTRUMENT APPROACH CHART

AMDT 7
 DOC 8168 ED 6 - 2014 -
 REVISED PROCEDURE
 MODIFIED -
 FAF ALTITUDE CONSTRAINT

| | | | | | |
|------|---|----------------------|---------|------|-------------------------------------|
| APP | Roma Radar | 125.950 (127.125) | AD ELEV | LIEO | OLBIA/ COSTA SMERALDA RNP RWY 05 |
| TWR | Olbia TWR | 118.975 (121.950) | 37 | | |
| ATIS | Olbia arrival and departure information | 113.900 | | | |



TRANSITION ALT 6000
 MISSED APPROACH: Proceed on TR 053° climbing to 4000ft. At E0521 (to be reached at 2000ft or above), turn right on TR 143° bound to E0522 then proceed direct to EKROB M.A. Holding pattern. Hold with left turn (IAS MAX 210KT).



| STRAIGHT IN APPROACH | | OCA(OCH) | A | B | C | D | CIRCLING SECTORS WARNING: DURING NIGHT AND IN IMC CONDITIONS CIRCLING IS FORBIDDEN | GS | FT PER MIN | DISTANCE | ALT (HGT) | MNM SECT ALT ARP 6200 |
|-------------------------------|------|-----------|-------------|-------------|------------|------------|---|------|------------|-------------|-------------|---------------------------------|
| LNAV/VNAV | LNAV | 820(784) | 850 (814) | 1200 (1164) | 1600(1564) | 1900(1864) | | 80 | 500 | 9 | 3430 (3394) | |
| | | | | | | | 100 | 620 | 8 | 3060 (3024) | | |
| CIRCLING (*) (see warning) | | 850 (814) | 1200 (1164) | 1600(1564) | 1900(1864) | | 120 | 740 | 6 | 2310 (2274) | | |
| | | | | | | | 140 | 870 | 5 | 1940 (1904) | | |
| | | | | | | | 160 | 990 | 3 | 1200 (1164) | | |
| | | | | | | | 180 | 1110 | 2 | 830 (794) | | |

TABULAR DESCRIPTION Olbia/Costa Smeralda RNP RWY05 – Instrument Approach Procedure

| Serial Number | Path Terminator | Waypoint Identifier | Fly Over | Course °M (°T) | Magnetic Variation | Distance (NM) | Turn Direction | Altitude (FT) | Speed Limit (KT) | VPA (°) / TCH (MT) | Navigation Specification |
|---------------|-----------------|---------------------|----------|----------------|--------------------|---------------|----------------|---------------|------------------|--------------------|--------------------------|
| 010 | IF | SENAL | - | - | - | - | - | +5000 | - | - | RNP APCH |
| 020 | TF | EO507 | - | 052°(054.0°) | - | 5.4 | - | +3800 | - | - | RNP APCH |
| 040 | TF | RWY05 | Y | 053°(055.3°) | - | 10.0 | - | @86 (4) | - | -3.5/15 | RNP APCH |
| 050 | TF | EO521 | - | 053°(055.5°) | - | 10.0 | - | +2000 | - | - | RNP APCH |
| 060 | TF | EO522 | - | 143°(145.5°) | - | 10.3 | - | - | - | - | RNP APCH |
| 080 | TF | EKROB | - | 098°(100.4°) | - | 4.4 | - | +4000 | - | - | RNP APCH |
| 090 | HM | EKROB | Y | 278°(280.3°) | - | - | L | +4000 | -210 | - | RNAV1 |

| Path Terminator | Waypoint Identifier | Inbound Course °M (°T) | Leg Distance (NM) (1) | Timing(min.)/ Waypoint Distance (NM) (2) | Turn Direction | Minimum Altitude (FT) | Maximum Altitude (FL) | Speed Limit (kt) | Magnetic Variation (°) | Navigation Specification |
|-----------------|---------------------|------------------------|-----------------------|--|----------------|-----------------------|-----------------------|------------------|------------------------|--------------------------|
| HM | EKROB (2) (3) | 278° (280.3°) | 3.9 | - / 5.1 | L | +4000 | - | -210 | 3 | RNAV1 |

(1) RNAV system with holding functionality

(2) RNAV system without holding functionality

(3) Entry on Track.

(4) THR Altitude plus TCH; for MA transition the value is according to the minima LNAV or LPV.

**WAYPOINT LIST
RNP RWY05**

| Waypoint Identifier | Coordinates |
|---------------------|----------------------------|
| EO507 | 40°47'55.3"N 009°19'38.2"E |
| EO521 | 40°59'18.0"N 009°41'21.2"E |
| EO522 | 40°50'48.7"N 009°49'02.2"E |