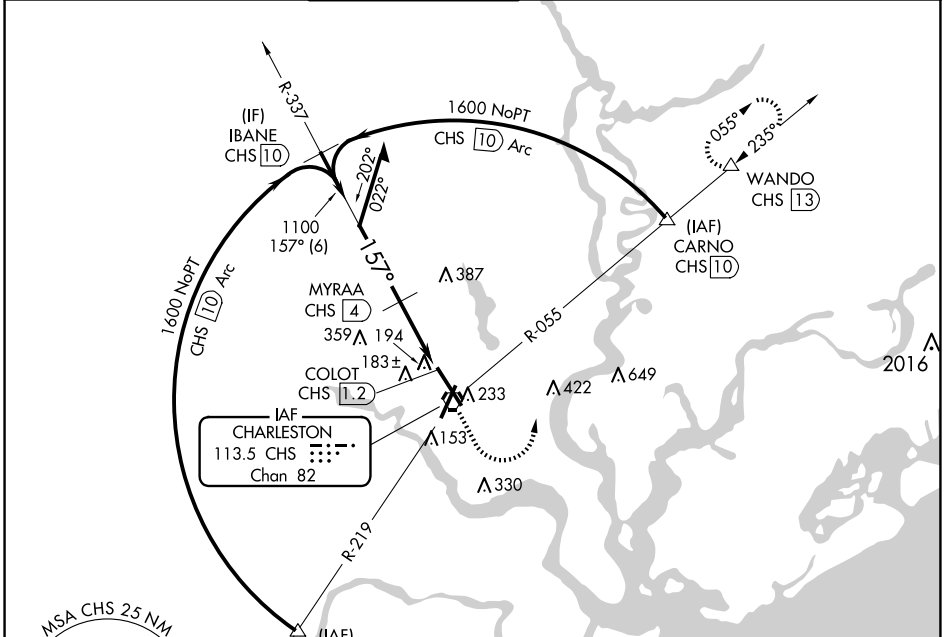


VORTAC CHS 113.5 Chan 82	APP CRS 157°	Rwy Idg 9001 TDZE 43 Apt Elev 46
--	------------------------	---

VOR Y or TACAN Y RWY 15

CHARLESTON AFB/INTL (CHS)

DME required.		ALSF-2	MISSED APPROACH: Climb to 500 then climbing left turn to 3500 on CHS VORTAC R-055 to WANDO/CHS 13 DME and hold, continue climb-in-hold to 3500.		
For inop ALS, increase S-15 Cat A/B visibility to RVR 5500 and Cat C/D visibility to RVR 6000.					
D-ATIS 124.75	CHARLESTON APP CON 120.7 306.925	CHARLESTON TOWER 126.0 239.0	GND CON 121.9 348.6	CLNC DEL 127.325 291.65	CPDLC



SE-2, 20 MAR 2025 to 17 APR 2025

SE-2, 20 MAR 2025 to 17 APR 2025

Remain within 10 NM 		CHS VORTAC 500 3500 CHS R-055 WANDO △		
VGSIs and descent angles not coincident (VGSi Angle 3.00°/TCH 50).				
CATEGORY	A	B	C	D
S-15	460/24	417 (500-½)	460/40	417 (500-¾)
CIRCLING	540-1	494 (500-1)	540-1½ 494 (500-1½)	740-2¼ 694 (700-2¼)
TDZ/CL Rwy 15 REIL Rws 3 and 21 HIRL Rws 3-21 and 15-33				