

# MANCHESTER ONE DEPARTURE

**TOP ALTITUDE:  
3000**

ATIS  
119.55  
CLNC DEL  
135.9  
GND CON  
121.9  
MANCHESTER TOWER  
121.3 239.025  
BOS DEP CON  
124.9 269.075

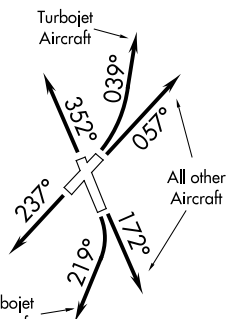
CAMBRIDGE  
115.0 CAM  
Chan 97

CONCORD  
112.9 CON  
Chan 76

KENNEBUNK  
117.1 ENE  
Chan 118

GARDNER  
116.95 GDM  
Chan 116 (Y)

BOSTON  
112.7 BOS  
Chan 74



### TAKEOFF MINIMUMS:

Rwy 6: Standard.

Rwy 17: 300-1½ or standard with a minimum climb of 270' per NM to 600.

Rwy 24: Standard with a minimum climb of 335' per NM to 800.

Rwy 35: 300-1½ or standard with a minimum climb of 265' per NM to 1400.

NOTE: RADAR required.

NOTE: Chart not to scale.

### DEPARTURE ROUTE DESCRIPTION

TAKEOFF RUNWAY 6: TURBOJET AIRCRAFT - Climbing left turn heading 039°, thence....

ALL OTHER AIRCRAFT - Climb on heading 057° or as assigned by ATC, thence....

TAKEOFF RUNWAY 17: TURBOJET AIRCRAFT - Climbing right turn heading 219°, thence....

ALL OTHER AIRCRAFT - Climb on heading 172° or as assigned by ATC, thence....

TAKEOFF RUNWAY 24: Climb on heading 237° or as assigned by ATC, thence....

TAKEOFF RUNWAY 35: Climb on heading 352° or as assigned by ATC, thence....

...expect vectors to assigned route/navaid/fix. Maintain 3000 or as assigned by ATC.

Expect clearance to filed altitude/flight level within five (5) minutes after departure.

# MANCHESTER ONE DEPARTURE