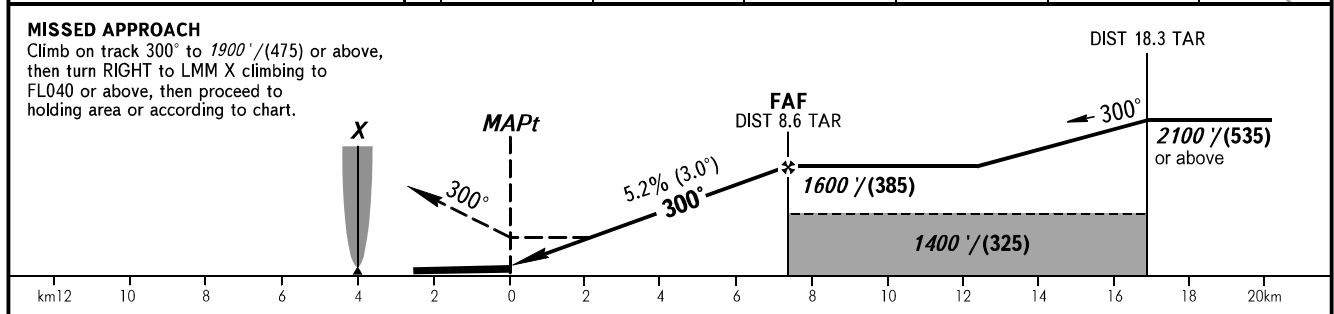
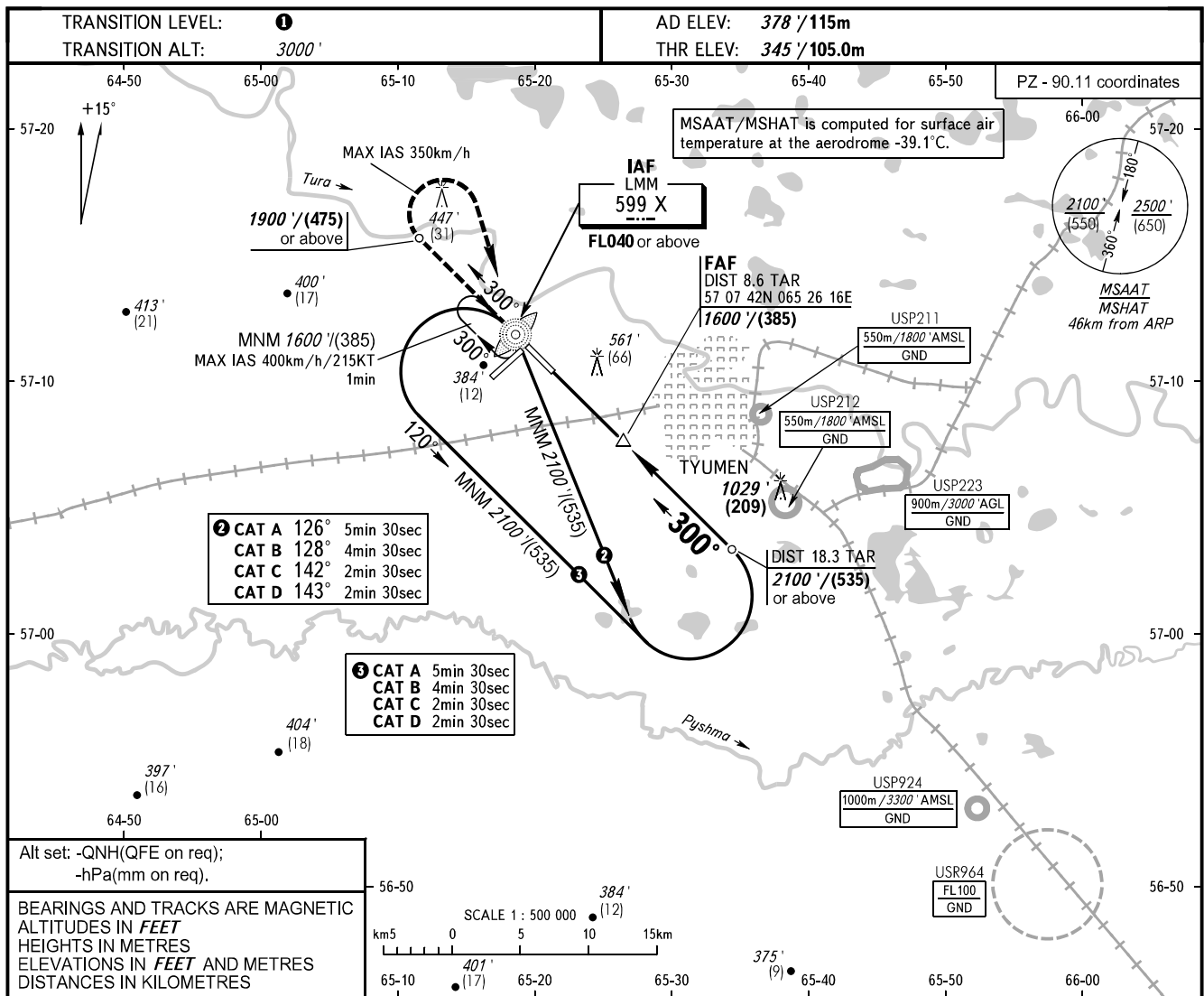


**INSTRUMENT
APPROACH
CHART - ICAO**

RADAR **126.100**
START **118.200**

TYUMEN, RUSSIA
ROSHCHINO
NDB RWY 30



OCA(H)	A	B	C	D								
Straight-in Approach	810' (470') (142)	810' (470') (142)	810' (470') (142)	810' (470') (142)								
Circling	810' (470') (142)	870' (500') (150)	970' (600') (185)	1070' (690') (215)								
GROUND SPEED	km/h	150	180	210	240	270	300	330	360	390	420	450
FAF - MAPt 7009m	min:sec	2:48	2:20	2:00	1:45	1:33	1:24	1:16	1:10	1:05	1:00	0:56
RATE OF DESCENT	m/s	2.2	2.6	3.1	3.5	3.9	4.4	4.8	5.2	5.7	6.1	6.6
	ft/min	433	512	610	689	768	866	945	1024	1122	1201	1299

① **TRANSITION LEVEL:**
- FL040 when QNH is 1013 hPa (760mm mercury column) or above;
- FL050 when QNH is 977 hPa (733mm mercury column) or above, but less than 1013 hPa (760mm mercury column);
- FL060 when QNH is less than 977 hPa (733mm mercury column).

WARNING
Turn before passing MAPt is PROHIBITED.