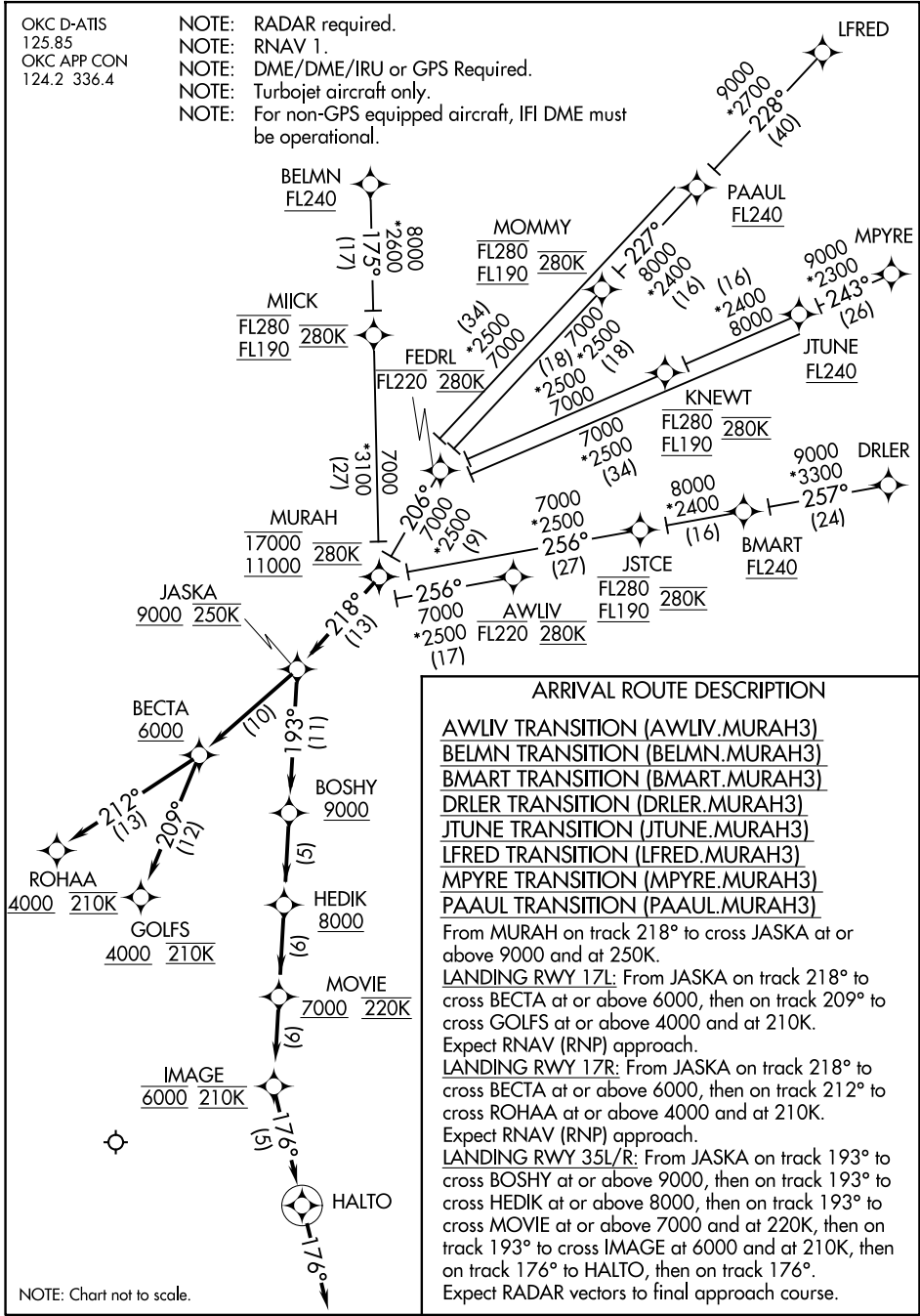


MURAH THREE ARRIVAL (RNAV)

OKC D-ATIS
125.85
OKC APP CON
124.2 336.4

- NOTE: RADAR required.
- NOTE: RNAV 1.
- NOTE: DME/DME/IRU or GPS Required.
- NOTE: Turbojet aircraft only.
- NOTE: For non-GPS equipped aircraft, IFI DME must be operational.



ARRIVAL ROUTE DESCRIPTION

- AWLIV TRANSITION (AWLIV.MURAH3)
- BELMN TRANSITION (BELMN.MURAH3)
- BMART TRANSITION (BMART.MURAH3)
- DRLER TRANSITION (DRLER.MURAH3)
- JTUNE TRANSITION (JTUNE.MURAH3)
- LFRED TRANSITION (LFRED.MURAH3)
- MPYRE TRANSITION (MPYRE.MURAH3)
- PAUL TRANSITION (PAUL.MURAH3)

From MURAH on track 218° to cross JASKA at or above 9000 and at 250K.

LANDING RWY 17L: From JASKA on track 218° to cross BECTA at or above 6000, then on track 209° to cross GOLFS at or above 4000 and at 210K. Expect RNAV (RNP) approach.

LANDING RWY 17R: From JASKA on track 218° to cross BECTA at or above 6000, then on track 212° to cross ROHAA at or above 4000 and at 210K. Expect RNAV (RNP) approach.

LANDING RWY 35L/R: From JASKA on track 193° to cross BOSHY at or above 9000, then on track 193° to cross HEDIK at or above 8000, then on track 193° to cross MOVIE at or above 7000 and at 220K, then on track 193° to cross IMAGE at 6000 and at 210K, then on track 176° to HALTO, then on track 176°.

Expect RADAR vectors to final approach course.

NOTE: Chart not to scale.

MURAH THREE ARRIVAL (RNAV)

SC-1, 20 MAR 2025 to 17 APR 2025

SC-1, 20 MAR 2025 to 17 APR 2025