

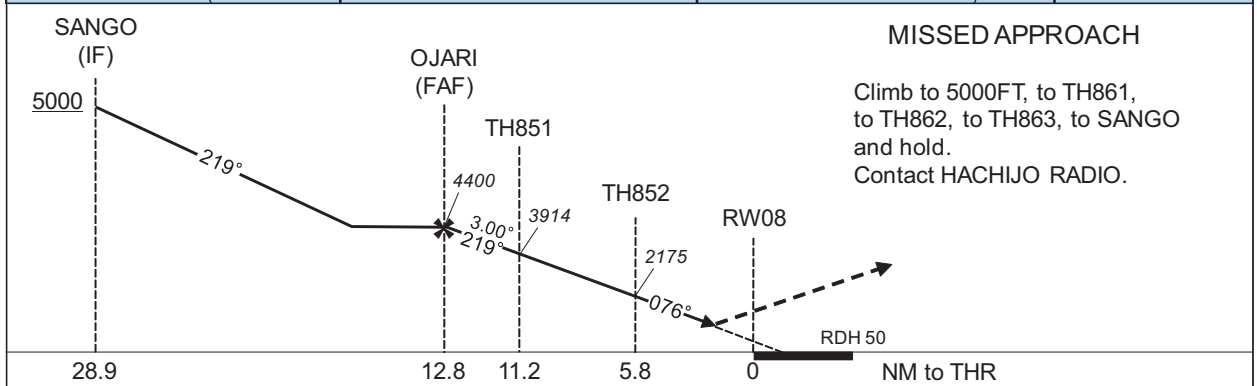
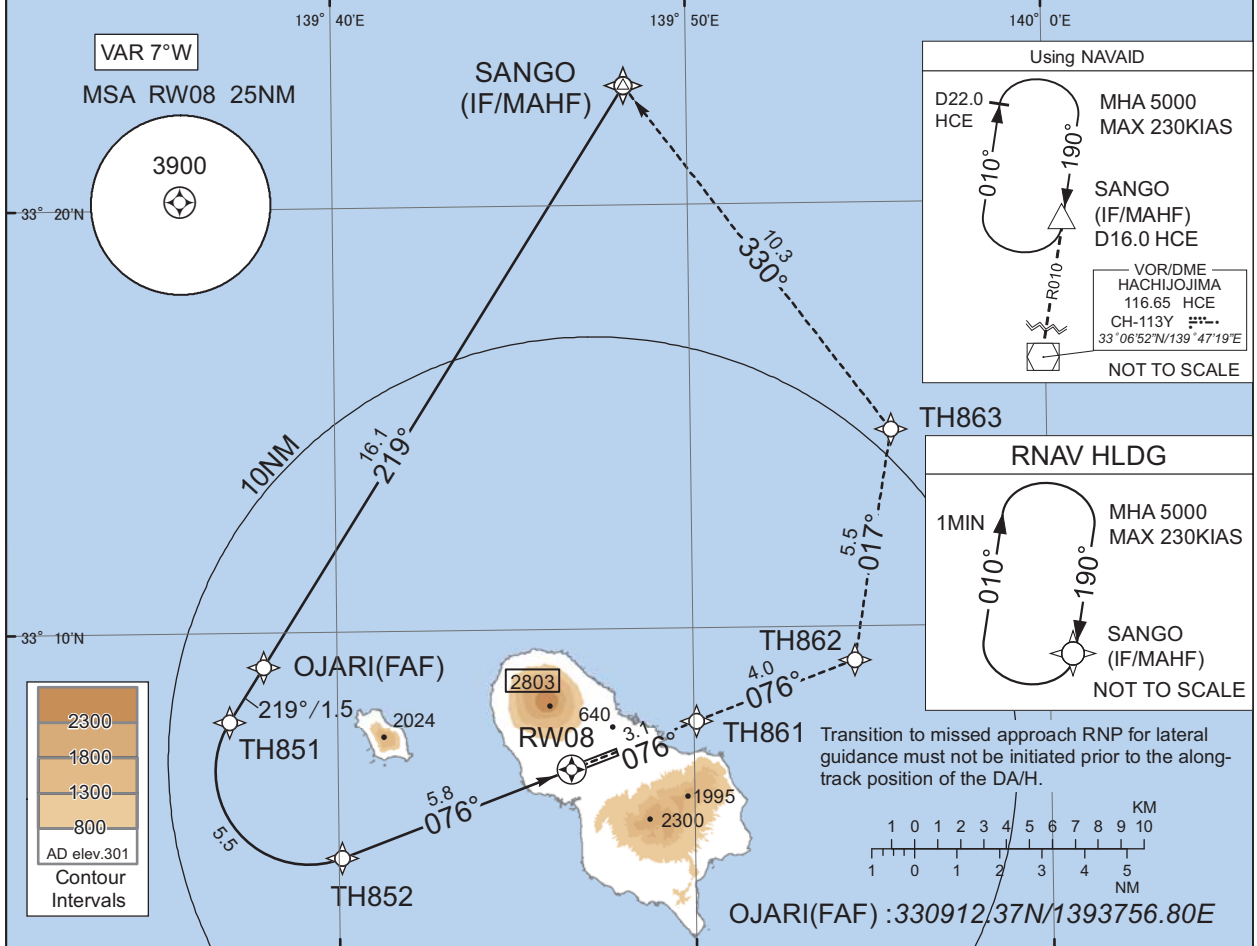
INSTRUMENT APPROACH CHART

RJTH / HACHIOJIMA

RNP Y RWY08(AR)

TOKYO CONTROL 125.9 - 134.15 318.2 - 227.3	RNP AR RF required.	HACHIOJO RADIO 118.7 AFIS provided by New Chitose Airport Office	NO RADAR
--	------------------------	---	----------

For uncompensated Baro-VNAV systems, procedure not authorized below 0°C / above 45°C



Missed APCH climb gradient MNM 5.0%

CAT	RNP 0.29		RNP 0.30	
	DA(H)	CMV	DA(H)	CMV
A	-	-	-	-
B	-	-	-	-
C	806(524)	2000	824(542)	2000
D	-	-	-	-

MINIMA with Missed APCH climb gradient of 2.5% are not established.

Authorization Required

CHANGE : PROC renamed.

INSTRUMENT APPROACH CHART

RJTH / HACHIJOJIMA

RNP Y RWY08(AR)

Coding Table

Serial Number	Path Descriptor	Waypoint Identifier	Fly Over	Course °M(°T)	Magnetic Variation	Distance (NM)	Turn Direction	Altitude (FT)	Speed (KIAS)	VPA/RDH (°/FT)	RNP Value
001	IF	SANGO	-	-	-6.9	-	-	+5000	-	-	-
002	TF	OJARI	-	219 (212.3)	-6.9	16.1	-	4400	-	-	1.0
003	TF	TH851	-	219 (212.2)	-6.9	1.5	-	3914	-	-3.00	0.29 0.30
004	RF Center: THRF1 r=2.19NM	TH852	-	-	-6.9	5.5	L	2175	-	-3.00	0.29 0.30
005	TF	RW08	Y	076 (069.4)	-6.9	5.8	-	332	-	-3.00/50	0.29 0.30
006	TF	TH861	-	076 (069.5)	-6.9	3.1	-	-	-	-	0.29 0.30
007	TF	TH862	-	076 (069.5)	-6.9	4.0	-	-	-	-	1.0
008	TF	TH863	-	017 (009.6)	-6.9	5.5	-	-	-	-	1.0
009	TF	SANGO	-	330 (323.0)	-6.9	10.3	-	5000	-	-	1.0

Path	Waypoint Identifier	Inbound Course °M(°T)	Magnetic Variation	Outbound Time (MIN)	Turn Direction	Minimum Altitude (FT)	Maximum Altitude (FT)	Speed (KIAS)	RNP Value
Hold	SANGO	190 (182.8)	-6.9	1.0 (-14000)	R	5000	FL140	-230 (-14000)	1.0

Waypoint Coordinates

Waypoint Identifier	Coordinates	RF Arc Center Identifier	Coordinates
SANGO	332250.44N / 1394814.02E	THRF1	330644.49N / 1393910.78E
OJARI	330912.37N / 1393756.80E		
TH851	330754.90N / 1393658.54E		
TH852	330441.17N / 1394005.63E		
RW08	330643.03N / 1394633.07E		
TH861	330749.27N / 1395004.24E		
TH862	330913.15N / 1395432.21E		
TH863	331439.22N / 1395537.92E		

CHANGE : PROC renamed.