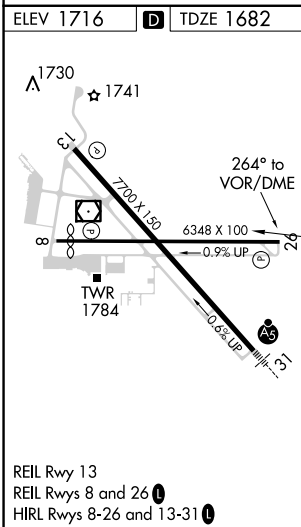
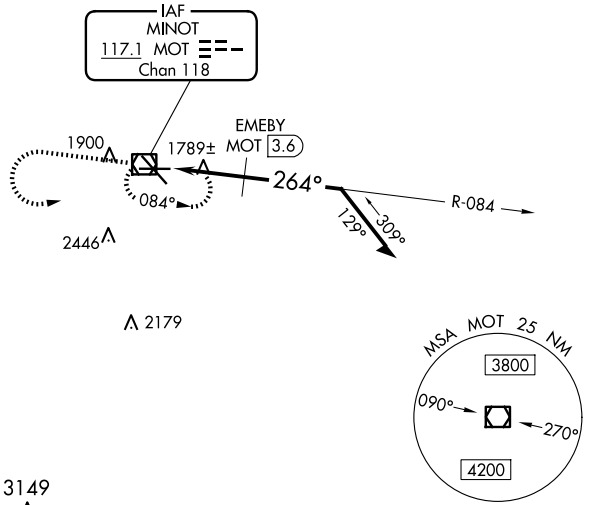


VOR/DME MOT 117.1 Chan 118	APP CRS 264°	Rwy Idg TDZE 1682 Apt Elev 1716	6348
--	------------------------	---	-------------

VOR RWY 26

MINOT INTL (MOT)

		MISSED APPROACH: Climb to 3600 then left turn direct MOT VOR/DME and hold.		
ASOS 118.725	MINOT APP CON * 119.6 363.8	MAGIC CITY TOWER * 118.2 (CTAF) 251.125	GND CON 121.9	UNICOM 122.95



	3600	MOT	MOT VOR/DME 3500	084°	Remain within 10 NM
	VGSI and descent angles not coincident (VGSI Angle 3.00/TCH 49).		MOT 2	EMEBY MOT 3.6	264°
CATEGORY	A	B	C	D	
S-26	2540-1 858 (900-1)	2540-1¼ 858 (900-1¼)	2540-2½ 858 (900-2½)	2540-2¾ 858 (900-2¾)	
CIRCLING	2540-1 824 (900-1)	2540-1¼ 824 (900-1¼)	2800-3	1084 (1100-3)	
EMEBY FIX MINIMUMS					
S-26	2040-1 358 (400-1)			2040-1¼ 358 (400-1¼)	
CIRCLING	2200-1 484 (500-1)	2240-1 524 (600-1)	2800-3	1084 (1100-3)	

NC-1, 20 MAR 2025 to 17 APR 2025

NC-1, 20 MAR 2025 to 17 APR 2025