

RNAV (GPS) RWY 31C

APCH CRS 308°	Rwy Idg TDZE Arpt Elev	31C 8852 1079 1082	31L 6241 1080	31R 8316 1078
------------------	------------------------------	-----------------------------	---------------------	---------------------

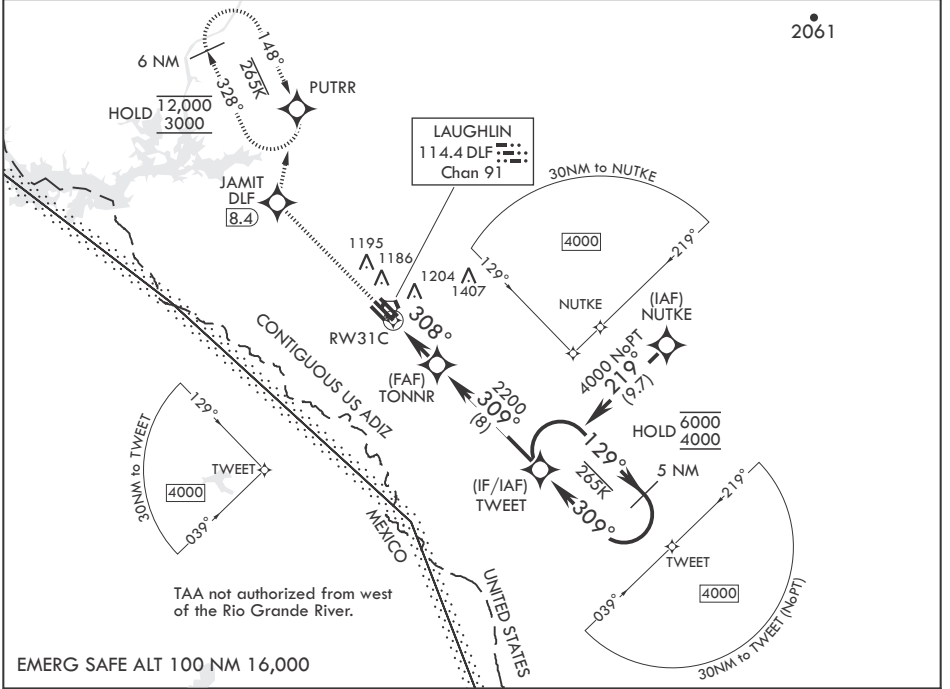
(USAF)

LAUGHLIN AFB (KDLF)

RNP APCH - GPS MISSED APPROACH: Climb to 3000 direct JAMIT, then track 005° to PUTRR and hold.

▼ * Circling not authorized SW of Rwy 13R-31L.

ATIS* 114.4 269.9	DEL RIO APP CON 119.6 259.1	TOWER* 125.2 307.375	GND CON 275.8	CLNC DEL 120.5 335.8
----------------------	--------------------------------	-------------------------	------------------	-------------------------



EMERG SAFE ALT 100 NM 16,000

3000	JAMIT	tr	005°	PUTRR
------	-------	----	------	-------

TWEET Holding Pattern

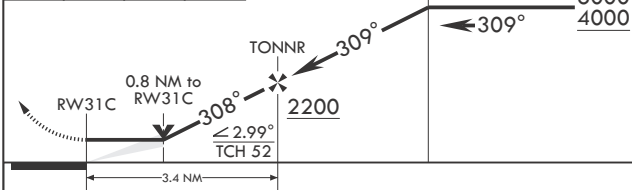
5 NM

6000

4000

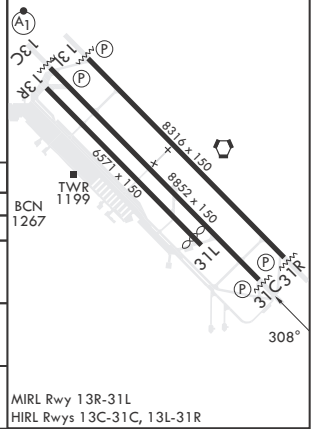
129°

309°



ELEV 1082	TDZE 31C 1079
Rwy 31L Idg 6241'	TDZE 31L 1080
	TDZE 31R 1078

CATEGORY	A	B	C	D	E
LNAV MDA	1380-1 301 (300-1)		1380-7/8 301 (300-7/8)		
SIDESTEP 31R	1380-1 302 (300-1)		1380-1 1/2 302 (300-1 1/2)	1380-2 302 (300-2)	
SIDESTEP 31L	1420-1 340 (400-1)		1420-1 1/2 340 (400-1 1/2)	1420-2 340 (400-2)	
CIRCLING*	1500-1 418 (500-1)	1540-1 458 (500-1)	1700-1 1/4 618 (700-1 1/4)	1700-2 618 (700-2)	1740-2 1/4 658 (700-2 1/4)



DEL RIO, TEXAS 29°22'N - 100°47'W LAUGHLIN AFB (KDLF)

Amdt 4 31OCT24

RNAV (GPS) RWY 31C

SC-3, 20 MAR 2025 to 17 APR 2025

SC-3, 20 MAR 2025 to 17 APR 2025