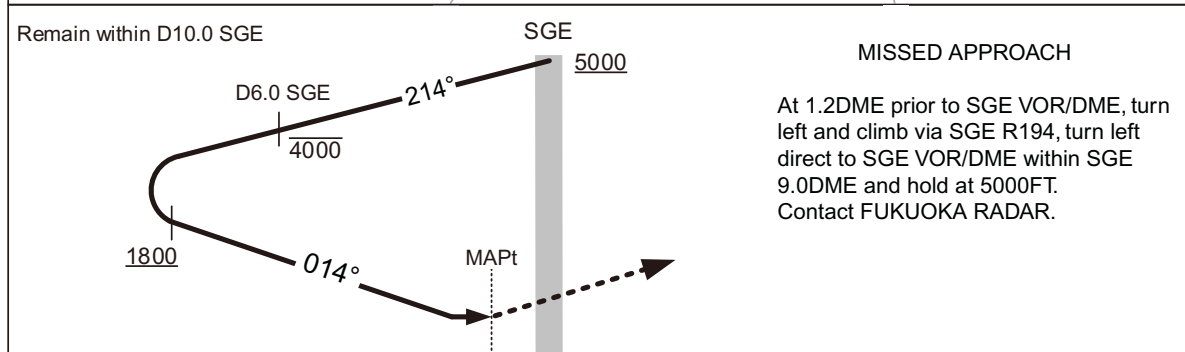
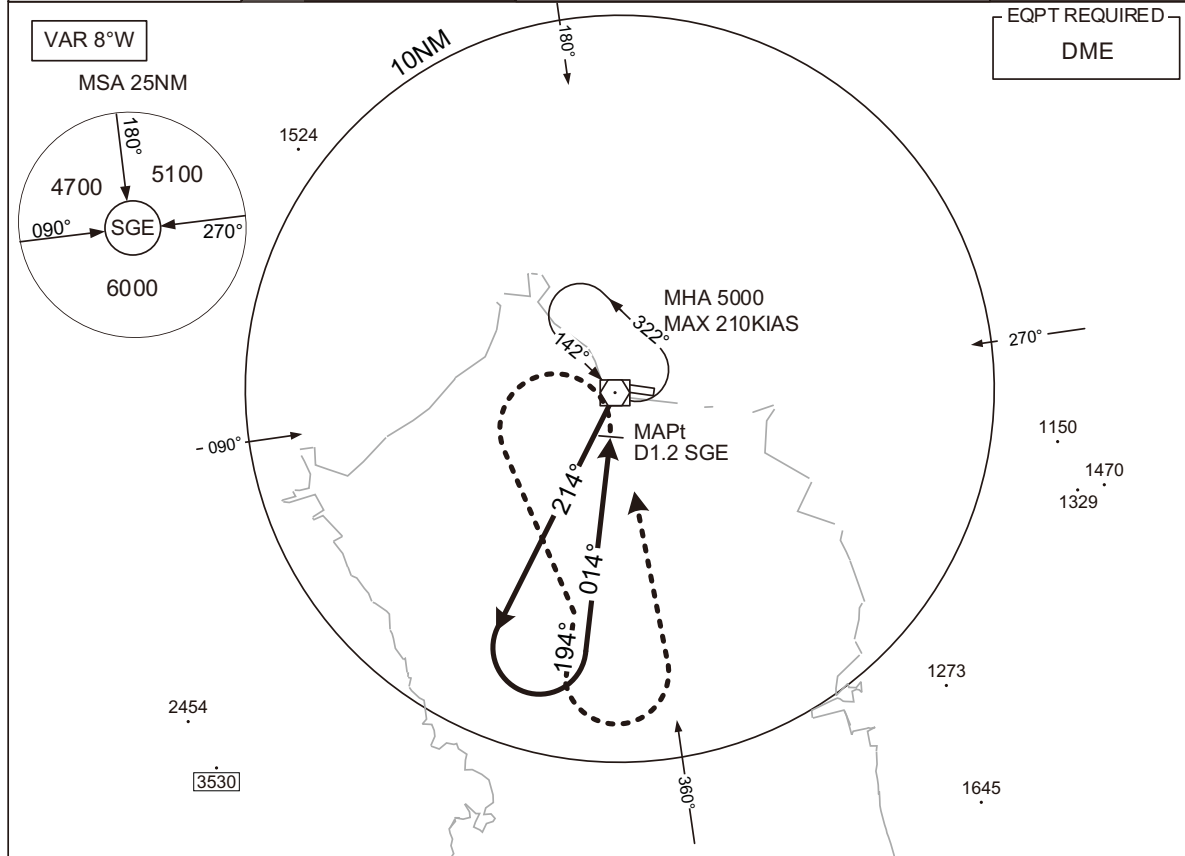


INSTRUMENT APPROACH CHART

RJFS/SAGA

VOR C

FUKUOKA RADAR 119.7 – 279.2	SAGA VOR/DME 114.75 SGE CH-94Y 33°08'55"N/130°17'34"E	SAGA RADIO 118.025 – 126.2	2130–2300(UTC) 1030–1500(UTC) 118.025 AFIS provided by Fukuoka Airport Office	NO RADAR
--------------------------------	--	-------------------------------	---	----------



MINIMA		AD elev. 6	
CAT	CIRCLING		
	MDA(H)	VIS	
A	360(354)	1600	
B	460(454)		
C		2400	
D	560(554)	3200	

Circling to SOUTH side of RWY only.

CHANGE: VAR.