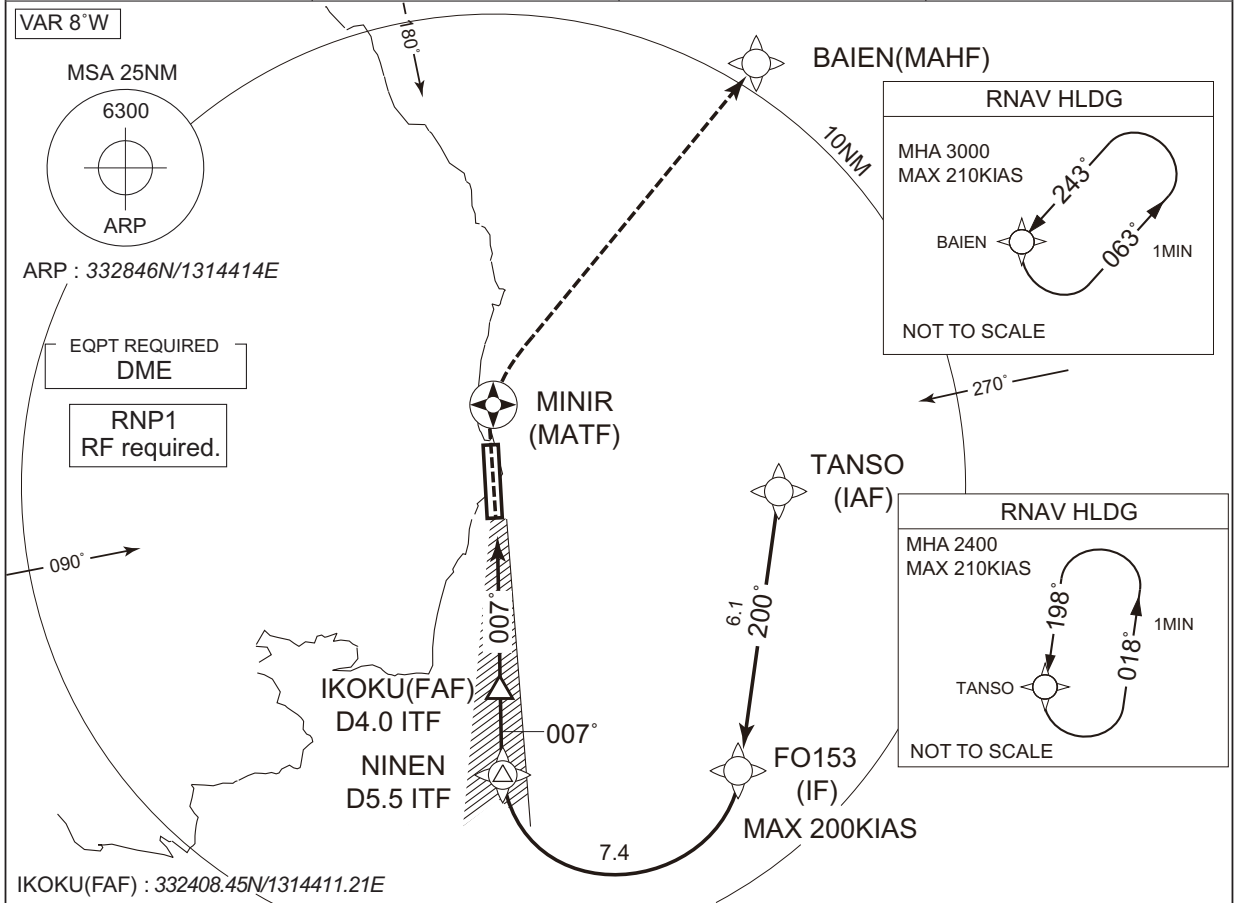


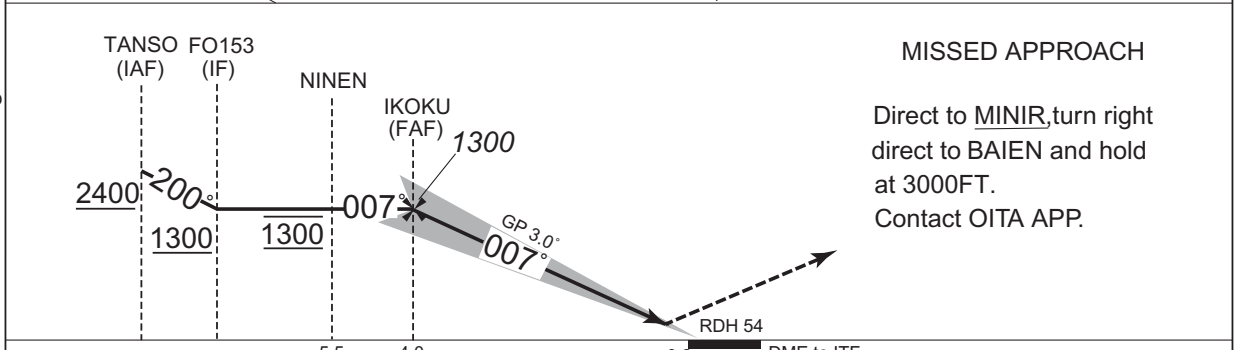
INSTRUMENT APPROACH CHART

RJFO / OITA ILS X RWY01

OITA APP 120.6	ILS - LOC 111.5 ITF 332.9 ILS-GP 332.9 ILS-DME CH-52X	OITA TOWER 118.8 - 126.2	RADAR AVBL ATIS 127.8
--------------------------	--	-----------------------------	--------------------------



CHANGE : PROC renamed. MINIR, FO153 established. RNAV HLDG established. PROC course. Missed APCH course. DME to ITF. NM to THR. Missed APCH climb gradient MNM. MINIMA for CIRCLING CAT C.



5.5	4.0	0.2	DME to ITF
5.3	3.8	0	NM to THR

Missed APCH climb gradient MNM 5.0%.

MINIMA		THR elev. 19	AD elev. 17	
CAT	CAT I		CIRCLING	
	DA(H)	RVR/CMV	MDA(H)	VIS
A	219 (200)	550	430 (413)	1600
B			470 (453)	
C			660 (643)	
D			760 (743)	

MINIMA with Missed APCH climb gradient of 2.5% are not established.
Circling to EAST side of RWY only.

INSTRUMENT APPROACH CHART

RJFO / OITA

ILS X RWY01

Coding Table

Serial Number	Path Descriptor	Waypoint Identifier	Fly Over	Course °M(°T)	Magnetic Variation	Distance (NM)	Turn Direction	Altitude (FT)	Speed (KIAS)	Vertical Angle	Navigation Specification
001	IF	TANSO	-	-	-8.0	-	-	+2400	-	-	RNP1
002	TF	FO153	-	200 (191.7)	-8.0	6.1	-	+1300	-200	-	RNP1
003	RF Center: FORF3 r=2.50NM	NINEN	-	-	-8.0	7.4	R	1300	-	-	RNP1

001	DF	MINIR	Y	-	-8.0	-	-	-	-	-	RNP1
002	DF	BAIEN	-	-	-8.0	-	R	3000	-	-	RNP1

Path	Waypoint Identifier	Inbound Course °M(°T)	Magnetic Variation	Outbound Time (MIN)	Turn Direction	Minimum Altitude (FT)	Maximum Altitude (FT)	Speed (KIAS)	Navigation Specification
Hold	TANSO	198 (190.0)	-8.0	1.0(-14000)	L	2400	FL140	-210(-14000)	RNP1
Hold	BAIEN	243 (234.9)	-8.0	1.0(-14000)	L	3000	FL140	-210(-14000)	RNP1

Waypoint Coordinates

Waypoint Identifier	Coordinates	RF Arc Center Identifier	Coordinates
TANSO	332806.56N / 1315133.74E	FORF3	332237.18N / 1314709.46E
FO153	332206.75N / 1315004.78E		
NINEN	332238.32N / 1314410.42E		
MINIR	333001.00N / 1314414.31E		
BAIEN	333720.39N / 1315059.77E		

CHANGE : PROC renamed. MINIR, FO153 established. HLDG pattern. Waypoint Coordinates added.