

DEL RIO, TEXAS

HI-ILS or LOC/DME Z RWY 13C

LOC I-DFL **110.3**

APCH CRS **128°**

Rwy Idg **8852 8316 6571**

TDZE **1082 1078 1077**

Arprt Elev **1082**

[USAF]

LAUGHLIN AFB (KDLF)

▲ * When ALS inop, increase RVR to 40 and vis to ¼ mile.

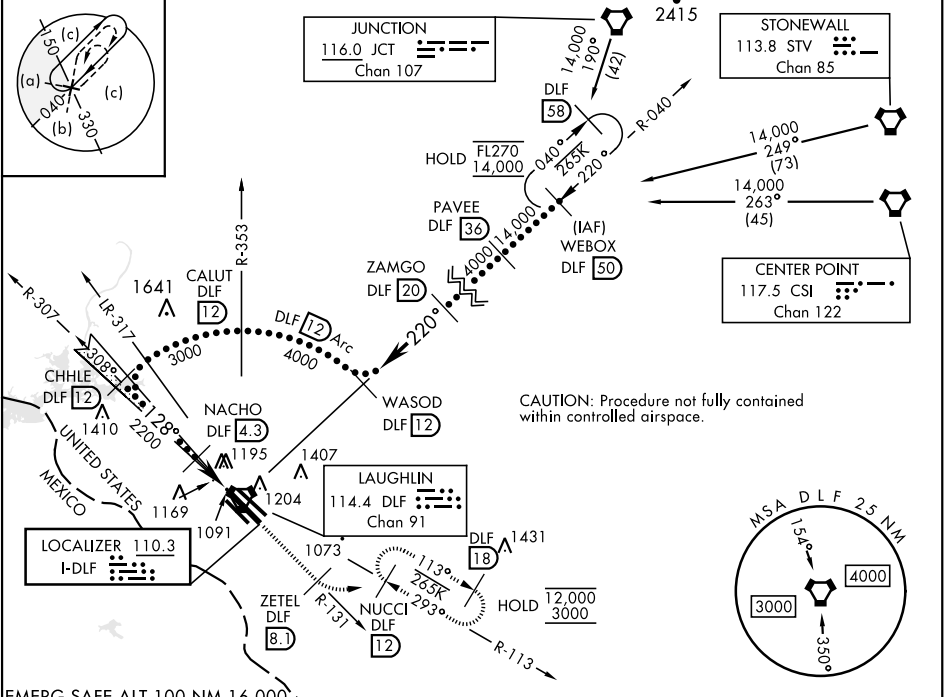
****** When ALS inop, increase CAT AB RVR to 55 and vis to 1 mile, CAT CDE RVR to 50 and vis to 1 mile.

******* Circling W of Rwy 13R-31L not authorized.

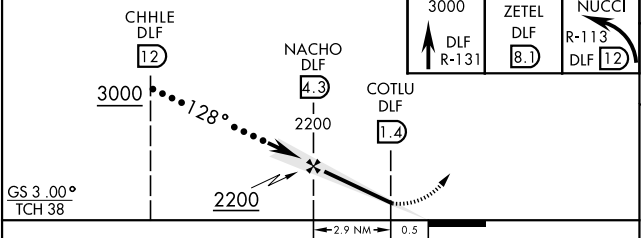
ALSIF-1 **(A1)**

MISSED APPROACH: Climb to 3000 on DLF VORTAC R-131 to 8.1 DME (ZETEL), then turn left to intercept DLF R-113 to 12 DME (NUCCI) and hold.

ATIS *	DEL RIO APP CON	TOWER *	GND CON	CLNC DEL
114.4 269.9	119.6 259.1	125.2 307.375	275.8	120.5 335.8

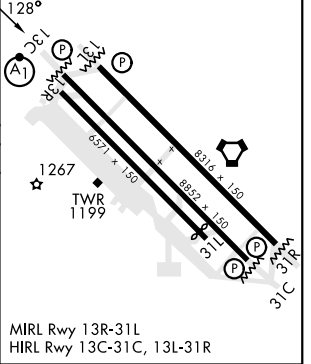


EMERG SAFE ALT 100 NM 16,000



ELEV 1082	TDZE 13C 1082
	TDZE 13L 1078
	TDZE 13R 1077
	Rwy 31L Idg 6241'

CATEGORY	A	B	C	D	E
S-ILS 13C *	1282/24		200	(200-½)	
S-LOC 13C **	1420/24	338 (400-½)	1420/26	338	(400-½)
SIDESTEP 13L	1440-1	362 (400-1)	1440-1½ 362 (400-½)	1440-2	362 (400-2)
SIDESTEP 13R	1480-1	403 (400-1)	1480-1½ 403 (400-½)	1480-2	403 (400-2)
CIRCLING ***	1500-1 418 (500-1)	1540-1 458 (500-1)	1700-1¾ 618(700-1¾)	1700-2	1740-2¼ 658(700-2¼)



DEL RIO, TEXAS
Amdt 6 20FEB25

29°22'N-100°47'W

LAUGHLIN AFB (KDLF)

HI-ILS or LOC/DME Z RWY 13C

SC-3, 20 MAR 2025 to 17 APR 2025

SC-3, 20 MAR 2025 to 17 APR 2025