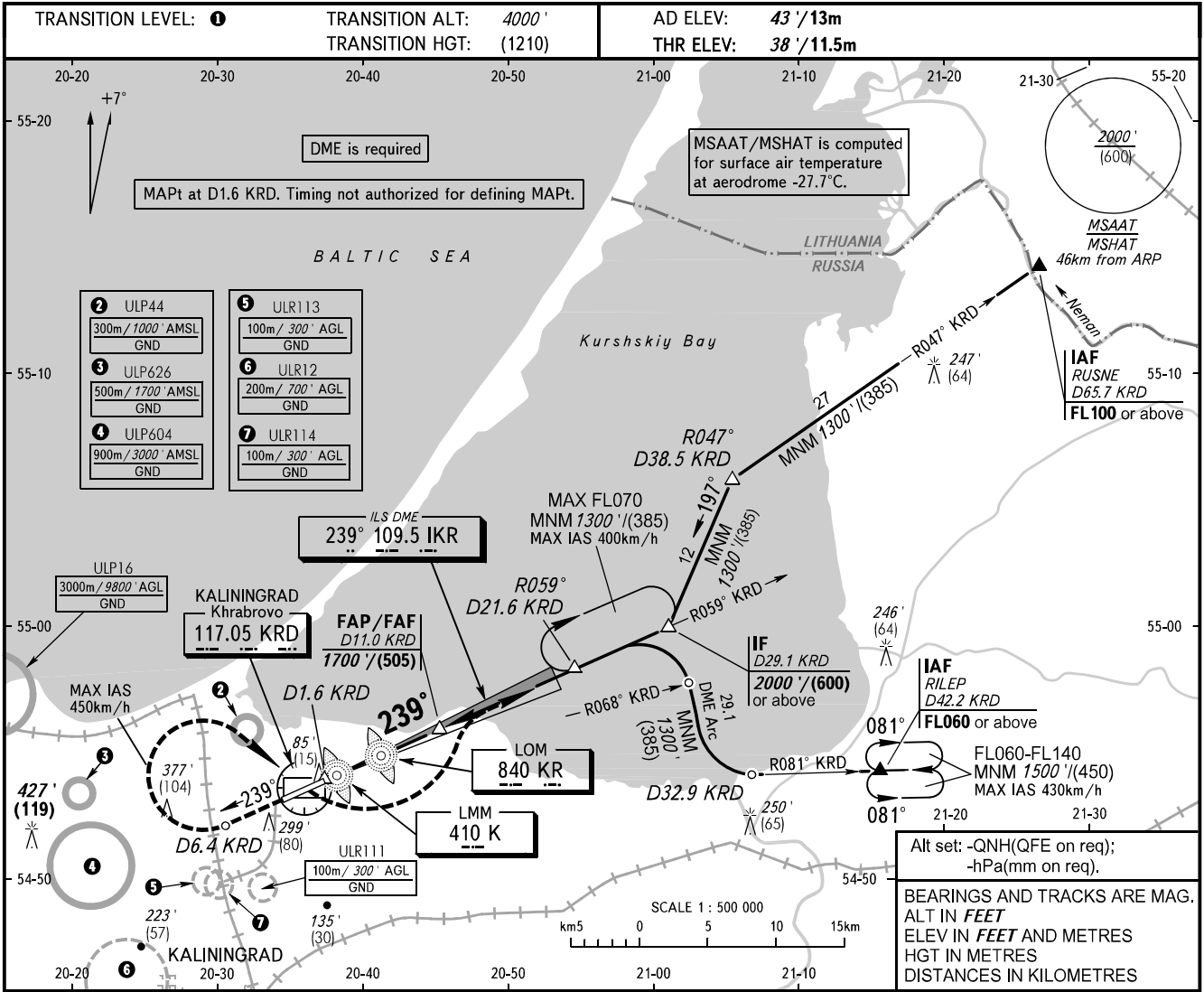


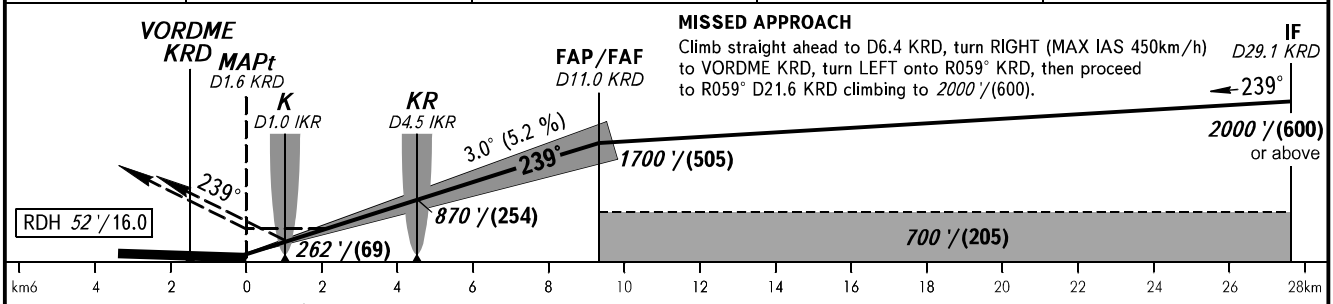
**INSTRUMENT  
APPROACH  
CHART - ICAO**

TOWER **127.200**

**KALININGRAD, RUSSIA  
KHRABROVO  
ILS W CAT I/II, LOC W RWY 24**



DME KR D	4.0	6.0	8.0	10.0
ALTITUDE/HEIGHT	511'/(145)	855'/(250)	1199'/(354)	1543'/(459)



OCA(H)		A	B	C	D						
Straight-in	CAT I	176' (137') (43)	185' (146') (45)	196' (157') (49)	210' (171') (53)						
	CAT II	87' (48') (15)	98' (59') (18)	111' (72') (22)	124' (85') (26)						
Approach	LOC	380' (340') (105)	380' (340') (105)	380' (340') (105)	380' (340') (105)						
Circling		600' (550') (170)	600' (550') (170)	700' (650') (205)	780' (730') (225)						
GROUND SPEED		km/h	150	180	210	240	270	300	330	360	390
RATE OF DESCENT		m/s	2.2	2.6	3.0	3.5	3.9	4.4	4.8	5.2	5.7
		ft/min	433	512	610	689	768	866	945	1024	1122

**TRANSITION LEVEL:**  
 - FLO50 when QNH is 1013 hPa (760mm mercury column) or above;  
 - FLO60 when QNH is 977 hPa (733mm mercury column) or above, but less than 1013 hPa (760mm mercury column);  
 - FLO70 when QNH is less than 977 hPa (733mm mercury column).

**WARNING**  
 Zero range of DME IKR is indicated at RWY 24 THR.

CHANGE: ULP626