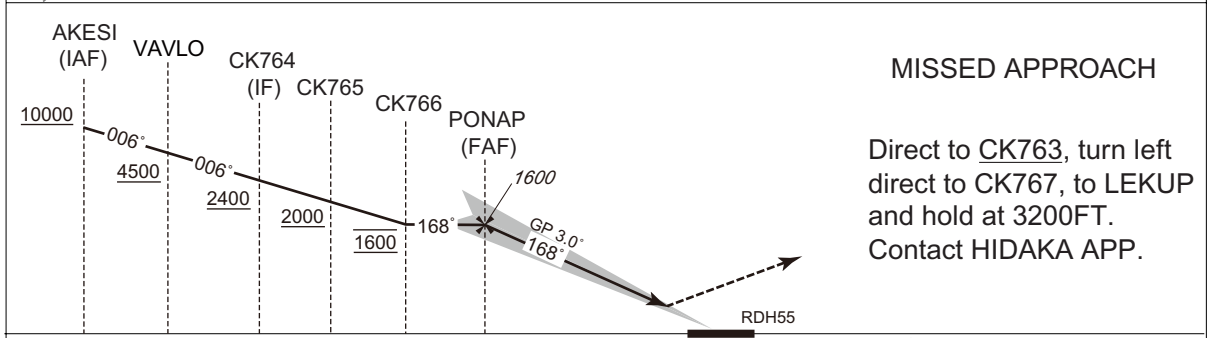
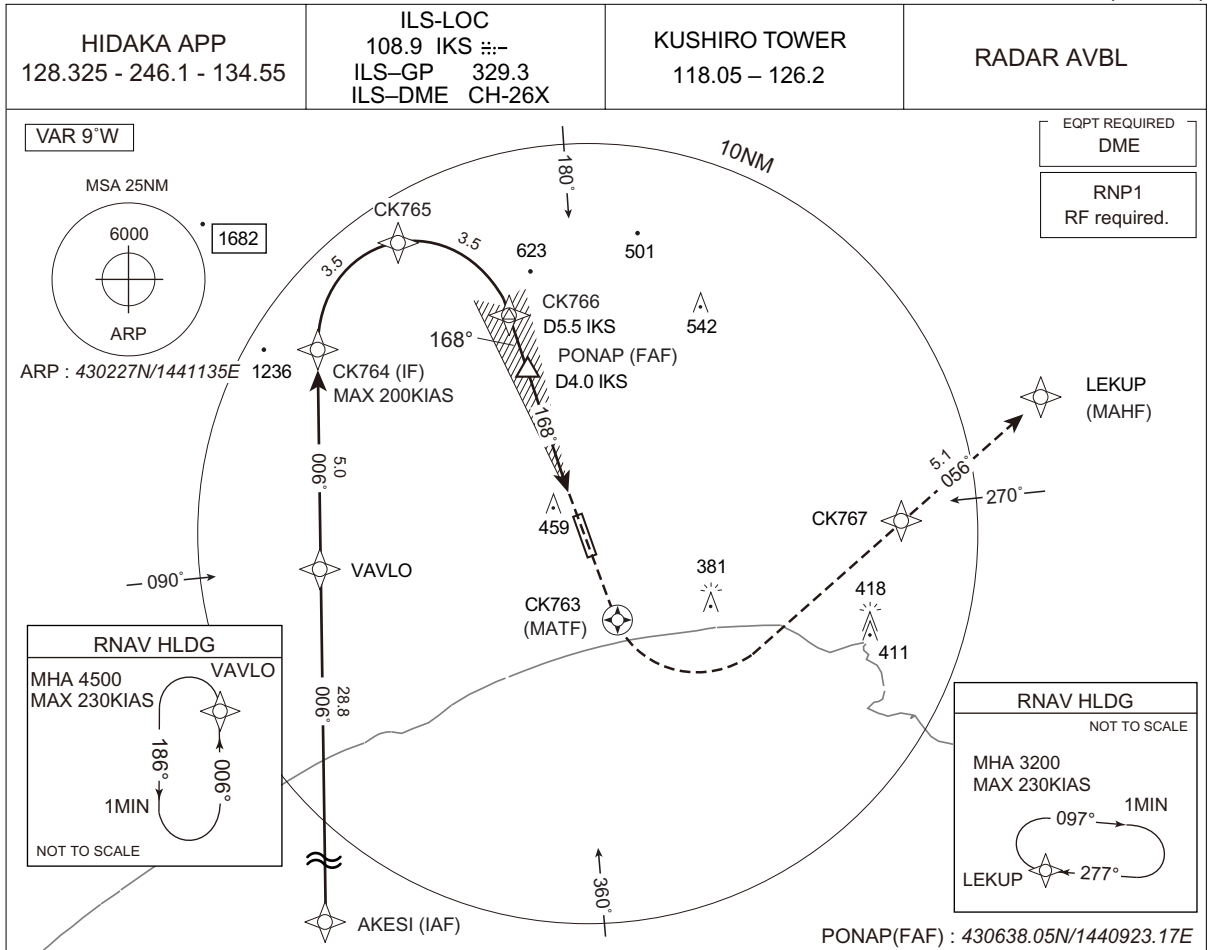


INSTRUMENT APPROACH CHART

RJCK / KUSHIRO ILS X RWY17(CAT III)



MISSED APPROACH

Direct to CK763, turn left
 direct to CK767, to LEKUP
 and hold at 3200FT.
 Contact HIDAKA APP.

5.5	4.0	0.2	DME to IKS
5.3	3.8	0	NM to THR

Missed APCH climb gradient MNM 4.0%

MINIMA		THR elev. 323		AD elev. 311			
CAT	CAT III	CAT II		CAT I		CIRCLING	
	RVR	DA(H)	RA	RVR	DA(H)	RVR/ CMV	MDA(H) VIS
A							730 (419) 1600
B		Not applicable.					770 (459) 2400
C	100			523 (200)	550		870 (559) 3200
D							

MINIMA with Missed APCH climb gradient of 2.5% are not established.
 Circling to EAST side of RWY only.
 Values of RA may increase or decrease rapidly affected by terrain between IKS 0.4DME and 0.8DME.

CHANGE : New PROC.

INSTRUMENT APPROACH CHART

RJCK / KUSHIRO

ILS X RWY17(CATⅢ)

Coding Table

Serial Number	Path Descriptor	Waypoint Identifier	Fly Over	Course °M(°T)	Magnetic Variation	Distance (NM)	Turn Direction	Altitude (FT)	Speed (KIAS)	Vertical Angle	Navigation Specification
001	IF	AKESI	-	-	-9.3	-	-	+10000	-	-	RNP1
002	TF	VAVLO	-	006 (357.1)	-9.3	28.8	-	+4500	-	-	RNP1
003	TF	CK764	-	006 (357.0)	-9.3	5.0	-	+2400	-200	-	RNP1
004	RF Center: CKRF3 r=2.51NM	CK765	-	-	-9.3	3.5	R	+2000	-	-	RNP1
005	RF Center: CKRF3 r=2.51NM	CK766	-	-	-9.3	3.5	R	1600	-	-	RNP1
001	DF	CK763	Y	-	-9.3	-	-	-	-	-	RNP1
002	DF	CK767	-	-	-9.3	-	L	-	-	-	RNP1
003	TF	LEKUP	-	056 (046.9)	-9.3	5.1	-	3200	-	-	RNP1

Path	Waypoint Identifier	Inbound Course °M(°T)	Magnetic Variation	Outbound Time (MIN)	Turn Direction	Minimum Altitude (FT)	Maximum Altitude (FT)	Speed (KIAS)	Navigation Specification
Hold	VAVLO	006 (357.0)	-9.3	1.0(-14000)	L	4500	FL140	-230(-14000)	RNP1
Hold	LEKUP	277 (268.1)	-9.3	1.0(-14000)	R	3200	FL140	-230(-14000)	RNP1

Waypoint Coordinates

Waypoint Identifier	Coordinates	RF Arc Center Identifier	Coordinates
AKESI	423316.40N / 1440423.57E	CKRF3	430707.83N / 1440527.18E
VAVLO	430200.49N / 1440223.10E		
CK764	430700.07N / 1440201.89E		
CK765	430935.11N / 1440444.33E		
CK766	430802.03N / 1440839.00E		
CK763	430017.29N / 1441242.98E		
CK767	430257.41N / 1442212.36E		
LEKUP	430627.23N / 1442719.94E		

CHANGE : New PROC.