

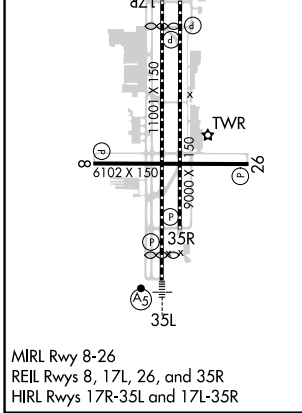
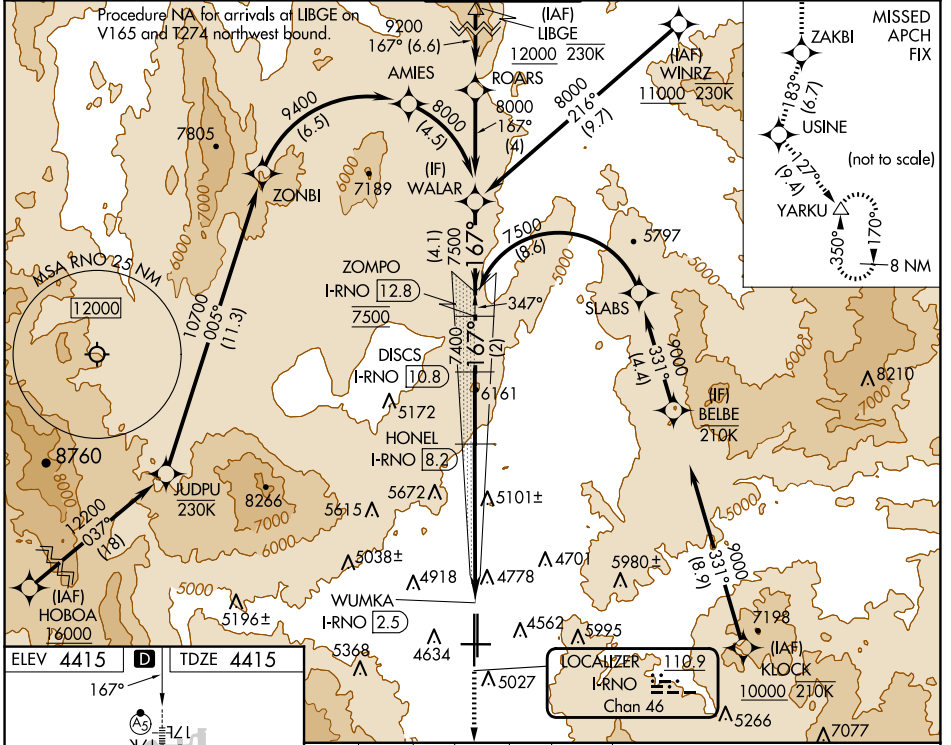
LOC/DME I-RNO <b>110.9</b> Chan <b>46</b>	APP CRS <b>167°</b>	Rwy Idg <b>10011</b> TDZE <b>4415</b> Apt Elev <b>4415</b>
---	------------------------	--

# ILS Z or LOC Z RWY 17R

RENO/TAHOE INTL (RNO)

DME required. RNP APCH - GPS. From HOBOA or KLOCK: RF	MALS R	MISSED APPROACH: Climb to 13000 on the RNAV missed approach route to YARKU and hold, continue climb-in-hold to 13000. *Missed approach requires minimum climb of 390 feet per NM to 8000.
<p>▼ Circling Rwy 8 NA at night.</p> <p>⚠ # For inop ALS, increase S-ILS 17R all Cats visibility to 2 SM.</p> <p>❄ -13°C *RVR 1800 authorized with use of FD or AP or HUD to DA.</p>		

D-ATIS <b>135.8 363.0</b>	NORCAL APP CON <b>119.2 279.55</b>	RENO TOWER <b>126.3 353.9</b>	<b>118.7 257.8</b>	GND CON <b>121.9 348.6</b>	CLNC DEL <b>124.9 370.85</b>	CPDLC
------------------------------	---------------------------------------	----------------------------------	--------------------	-------------------------------	---------------------------------	-------



13000	ZAKBI	tr 183°	USINE	tr 127°	YARKU	VGSI and ILS glidepath not coincident (VGSI Angle 3.06/TCH 77).
						DISCS I-RNO [10.8] ZOMPO I-RNO [12.8] WALAR
See planview for multiple IF locations.						HONEL I-RNO [8.2] 7400
WUMKA I-RNO [2.5] 6540						7400 167° 8000
0.6						2.2 NM
3.5 NM						2.6 NM
2 NM						4.1 NM
						GS 3.10° TCH 59

CATEGORY	A	B	C	D
S-ILS 17R*		4615/24	200 (200-1/2)	
S-ILS 17R#		5138-1 5/8	723 (800-1%)	
S-LOC 17R	5420/40 1005 (1100-3/4)	5420/55 1005 (1100-1)	5420-2 1/2	1005 (1100-2 1/2)
<b>C</b> CIRCLING	5420-1 1/4 1005 (1100-1 1/4)	5420-1 1/2 1005 (1100-1 1/2)	6480-3	2065 (2100-3)

SW-4, 20 MAR 2025 to 17 APR 2025

SW-4, 20 MAR 2025 to 17 APR 2025