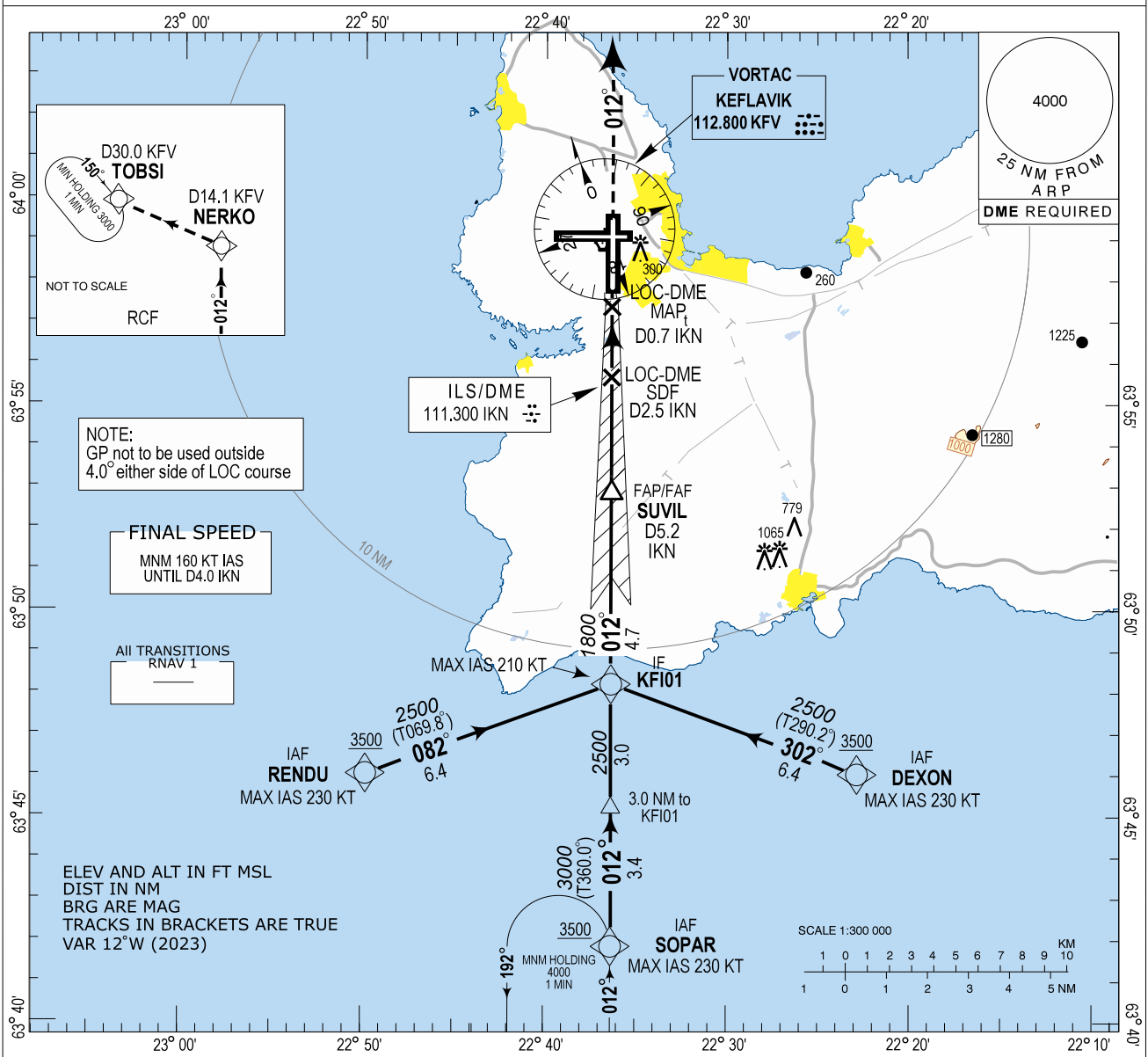


Keflavik ILS or LOC Z RWY 01 Instrument Approach Chart - ICAO

INSTRUMENT APPROACH CHART - ICAO AERODROME ELEV 170 APP 119.300 TWR 118.300 GND 121.900 ATIS 128.300 BIKF - KEFLAVIK ILS or LOC Z RWY 01



CHANGES: RESTRICTED AREA BIR2 AND BIR3 REMOVED

MISSED APPROACH:

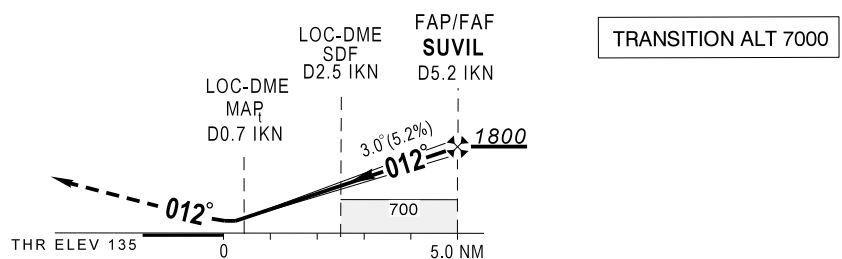
Climb on course 012° to 3000, expect vectoring by Keflavik APP.

RCF:

Passing D14.1 KfV (NERKO) turn left direct TOBSI and hold at 3000.

SCALE 1:300 000

ILS RDH 58



| OCA (H) | A | B | C | D | Remarks |
|-----------|-----------|-----------|-----------|-----------|------------------------------|
| ILS CAT I | 287 (152) | 298 (163) | 311 (176) | 325 (190) | |
| LOC-DME | 380 (245) | 380 (245) | 380 (245) | 380 (245) | MAP _t at D0.7 IKN |
| CIRCLING | 600 (430) | 670 (500) | 870 (700) | 940 (770) | |

| DME IKN | 1 | 2 | 3 | 4 | 5 |
|----------|-----|-----|------|------|------|
| ALTITUDE | 460 | 780 | 1100 | 1425 | 1750 |

Timing not authorized for defining MAP_t

| GS | kt | 80 | 100 | 120 | 140 | 160 | 180 |
|------------------------------|---------|------|------|------|------|------|------|
| FAF-MAP _t (4.5NM) | MIN:SEC | 3:20 | 2:40 | 2:14 | 1:54 | 1:40 | 1:29 |
| Rate of descent (5.2%) | ft/MIN | 430 | 540 | 650 | 750 | 860 | 970 |

BIKF ILS or LOC Z RWY01 - TRANSITIONS
Recommended Coding Table

| Serial Number | Path Descriptor | Waypoint Identifier | Fly-over | Course / Track °M(°T) | Magnetic Variation | Distance | Turn Direction | Altitude (ft) | Speed (kt/h) | VPA/TCH | Navigation Specification |
|---------------|-----------------|---------------------|----------|-----------------------|--------------------|----------|----------------|---------------|--------------|---------|--------------------------|
| 010 | IF | RENDU | - | | +12.0 | | | A3500+ | -230 | | RNAV 1(GNSS) |
| 020 | TF | KFI01 | - | 082 (069.8) | +12.0 | 6.4 | L | A2500+ | -210 | | RNAV 1(GNSS) |
| 010 | IF | SOPAR | - | | +12.0 | | | A3500+ | -230 | | RNAV 1(GNSS) |
| 020 | TF | KFI01 | - | 012 (360.0) | +12.0 | 6.4 | | A2500+ | -210 | | RNAV 1(GNSS) |
| 010 | IF | DEXON | - | | +12.0 | | | A3500+ | -230 | | RNAV 1(GNSS) |
| 020 | TF | KFI01 | - | 302 (290.2) | +12.0 | 6.4 | R | A2500+ | -210 | | RNAV 1(GNSS) |
| 030 | TF | SUVIL | - | 012 (360.0) | +12.0 | 4.7 | | A1800+ | | | RNAV 1(GNSS) |

Waypoint coordinates

| Waypoint Identifier | Coordinates | | Display | |
|---------------------|-------------|-------------|-----------|------------|
| | LAT | LON | LAT | LON |
| DEXON | 634603.13N | 0222249.48W | N 6346.05 | W 02222.82 |
| RENDU | 634603.37N | 0224950.86W | N 6346.06 | W 02249.85 |
| SOPAR | 634152.66N | 0223620.36W | N 6341.88 | W 02236.34 |
| KFI01 | 634814.49N | 0223620.07W | N 6348.24 | W 02236.33 |
| SUVIL | 635253.46N | 0223619.86W | N 6352.89 | W 02236.33 |
| RW01 | 635752.13N | 0223619.63W | N 6357.87 | W 02236.33 |
| NERKO | 641303.88N | 0223618.92W | N 6413.06 | W 02236.32 |
| TOBSI | 642007.38N | 0232550.71W | N 6420.12 | W 02325.85 |