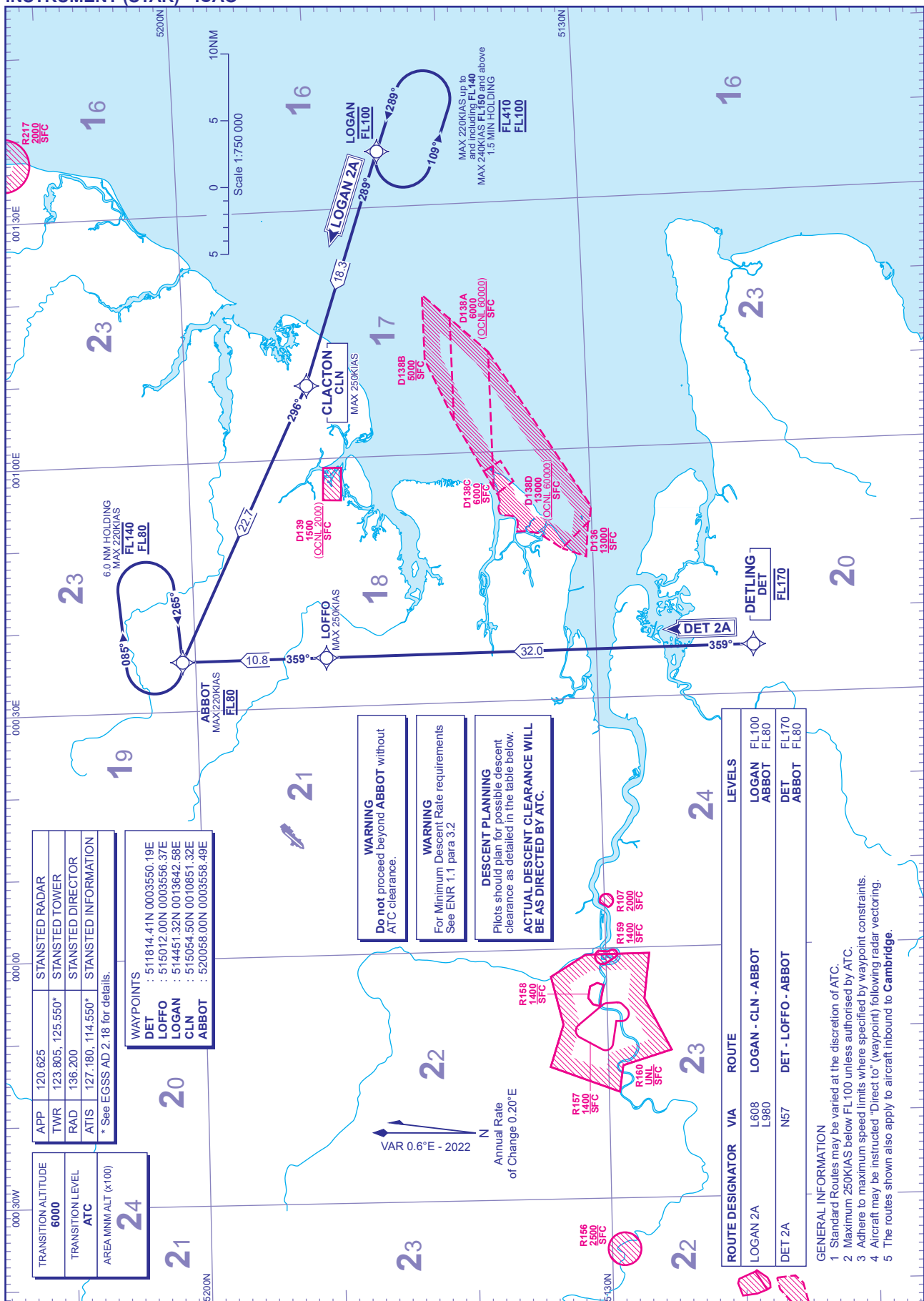


RNAV5 (DME/DME or GNSS) STANDARD ARRIVAL CHART - INSTRUMENT (STAR) - ICAO

DISTANCES IN NAUTICAL MILES
TRACKS ARE MAGNETIC
ALTITUDES AND ELEVATIONS ARE IN FEET

**LONDON STANSTED
LOGAN 2A DET 2A**



APP	120.625	STANSTED RADAR
TWR	123.805, 125.550*	STANSTED TOWER
RAD	136.200	STANSTED DIRECTOR
ATIS	127.180, 114.550*	STANSTED INFORMATION

* See EGSS AD 2.18 for details.

WAYPOINTS	
DET	: 511814.41N 0003550.19E
LOFFO	: 515012.00N 0003556.37E
LOGAN	: 514451.32N 0013642.58E
CLN	: 515054.50N 0010851.32E
ABBOT	: 520058.00N 0003558.49E

WARNING
Do not proceed beyond ABBOT without ATC clearance.

WARNING
For Minimum Descent Rate requirements See ENR 1.1 para 3.2

DESCENT PLANNING
Pilots should plan for possible descent clearance as detailed in the table below.
ACTUAL DESCENT CLEARANCE WILL BE AS DIRECTED BY ATC.

ROUTE DESIGNATOR	VIA	ROUTE	LEVELS
LOGAN 2A	L608 L980	LOGAN - CLN - ABBOT	FL100 FL80
DET 2A	N57	DET - LOFFO - ABBOT	FL170 FL80

- GENERAL INFORMATION**
- 1 Standard Routes may be varied at the discretion of ATC.
 - 2 Maximum 250KIAS below FL100 unless authorised by ATC.
 - 3 Adhere to maximum speed limits where specified by waypoint constraints.
 - 4 Aircraft may be instructed "Direct to" (waypoint) following radar vectoring.
 - 5 The routes shown also apply to aircraft inbound to Cambridge.