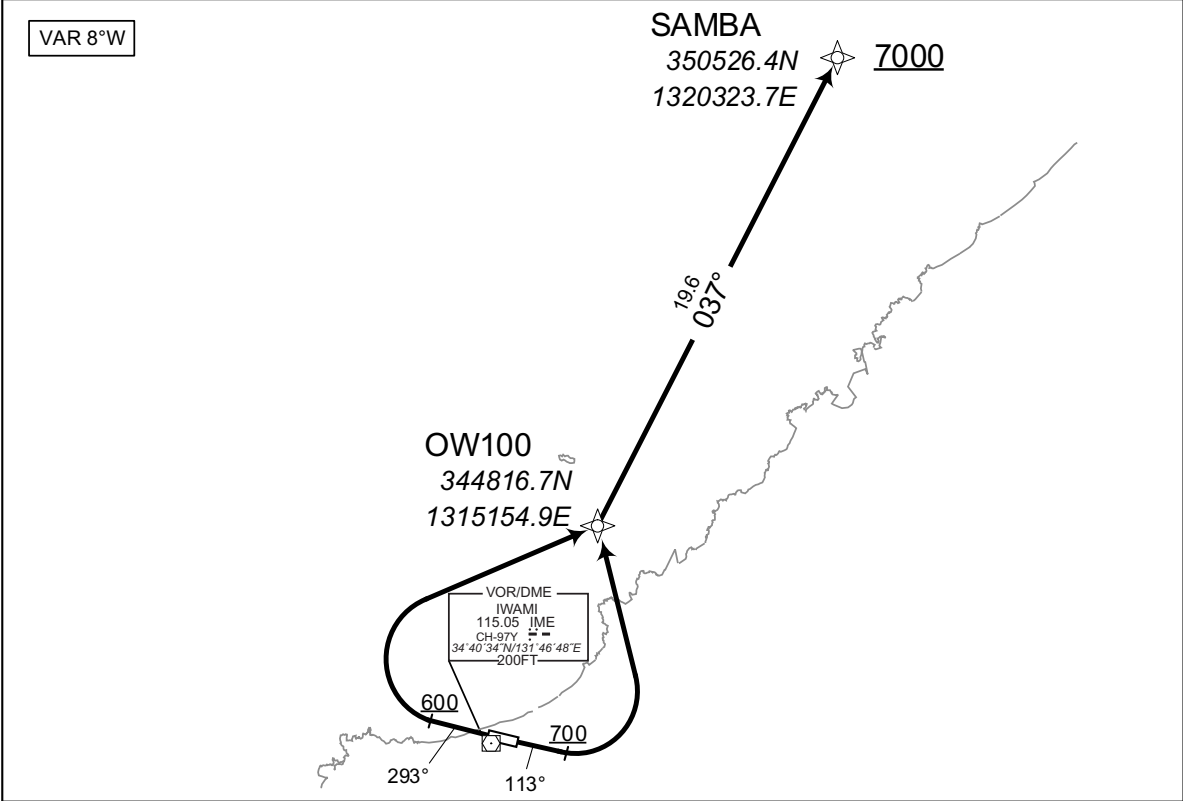


STANDARD DEPARTURE CHART-INSTRUMENT

RJOW / IWAMI RNAV SID

SEKISYU ONE DEPARTURE	RNP1
-----------------------	------

Note GNSS required.



RWY11 : Climb on HDG113° at or above 700FT, turn left...  
 RWY29 : Climb on HDG293° at or above 600FT, turn right...  
 ...direct to OW100, to SAMBA at or above 7000FT.

Note RWY11 : 7.0% climb gradient required up to 800FT.  
 OBST ALT 1182FT located at 4.8NM 094° FM end of RWY11.

CHANGE : Navigation Specification(Basic RNP1 → RNP1).

**RWY11**

Serial Number	Path Descriptor	Waypoint Identifier	Fly Over	Course °M(°T)	Magnetic Variation	Distance (NM)	Turn Direction	Altitude (FT)	Speed (KIAS)	Vertical Angle	Navigation Specification
001	VA	-	-	113 (104.8)	-8.2	-	-	+700	-	-	RNP1
002	DF	OW100	-	-	-8.2	-	L	-	-	-	RNP1
003	TF	SAMBA	-	037 (028.7)	-8.2	19.6	-	+7000	-	-	RNP1

**RWY29**

Serial Number	Path Descriptor	Waypoint Identifier	Fly Over	Course °M(°T)	Magnetic Variation	Distance (NM)	Turn Direction	Altitude (FT)	Speed (KIAS)	Vertical Angle	Navigation Specification
001	VA	-	-	293 (284.9)	-8.2	-	-	+600	-	-	RNP1
002	DF	OW100	-	-	-8.2	-	R	-	-	-	RNP1
003	TF	SAMBA	-	037 (028.7)	-8.2	19.6	-	+7000	-	-	RNP1

**INTENTIONALLY LEFT BLANK**