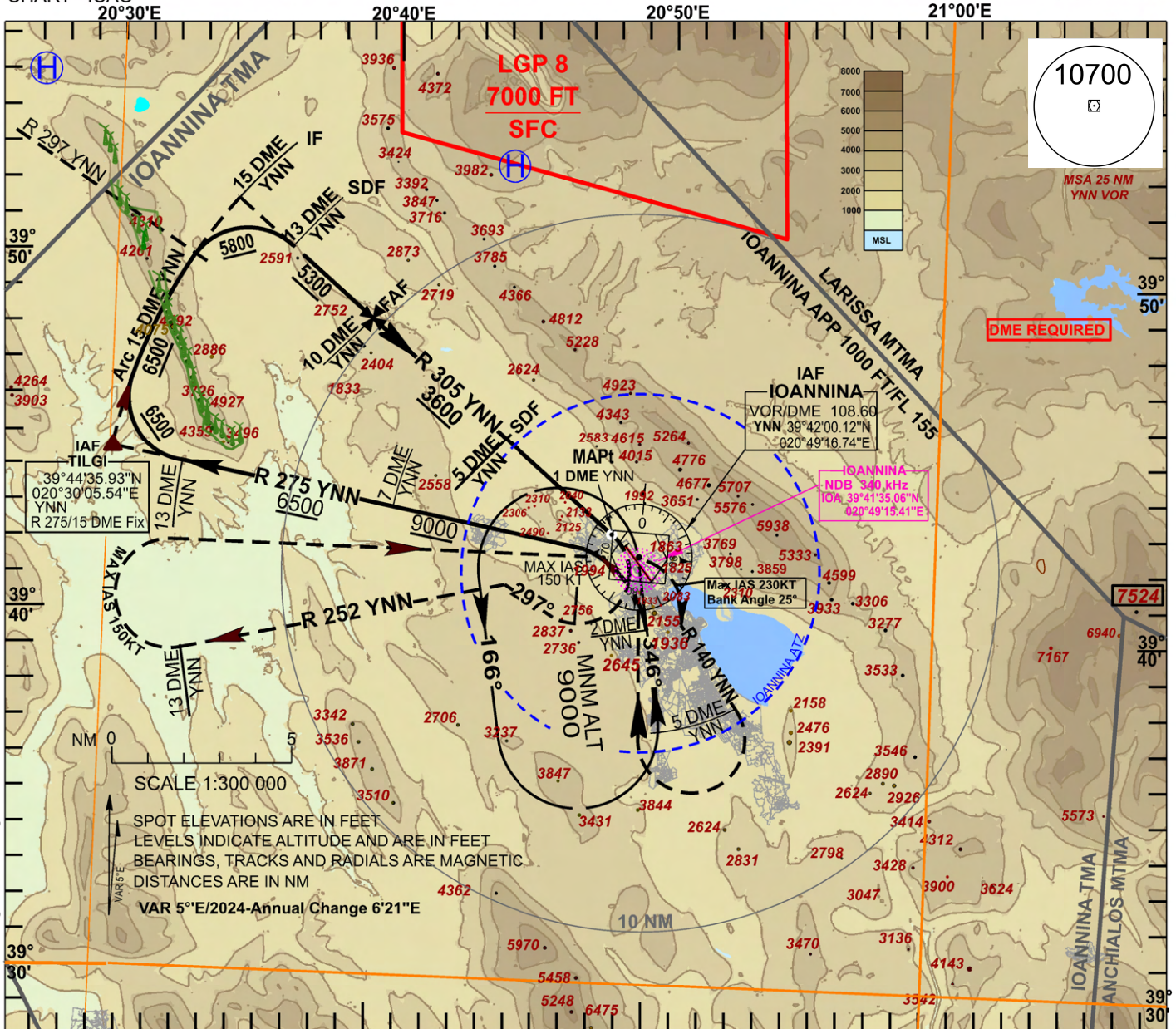


**INSTRUMENT
APPROACH
CHART - ICAO**

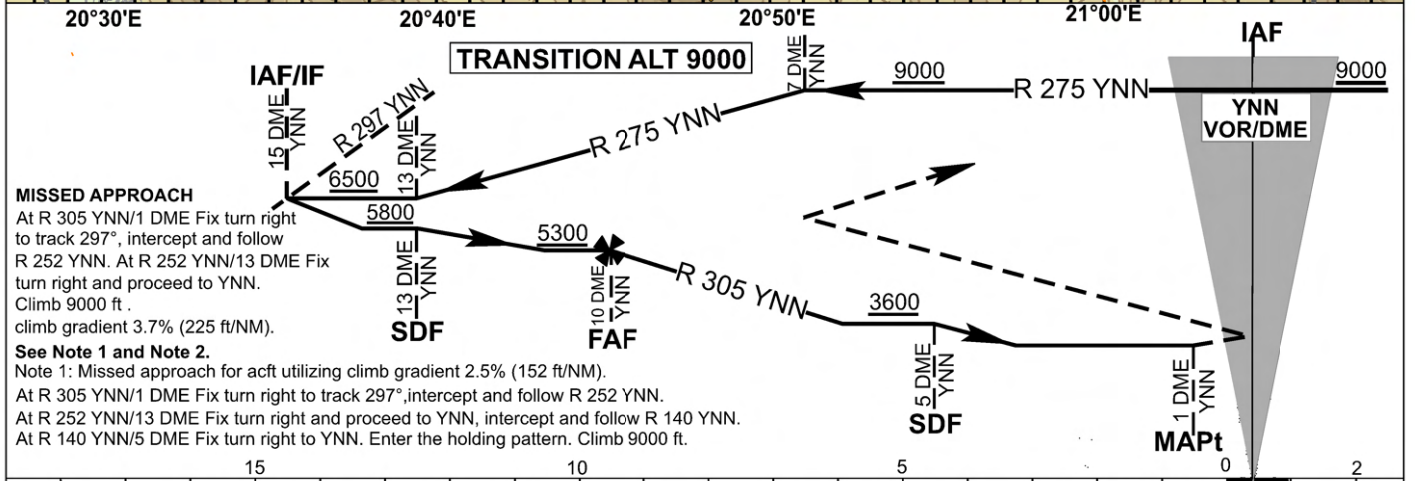
AERODROME ELEV 1558 ft
HEIGHTS RELATED TO AD ELEV

APP 118.600
TWR 132.200

**IOANNINA/ KING PYRROS
VOR a RWY 14 (Cat A, B)**



Change: MSA



MISSED APPROACH

At R 305 YNN/1 DME Fix turn right to track 297°, intercept and follow R 252 YNN. At R 252 YNN/13 DME Fix turn right and proceed to YNN. Climb 9000 ft. climb gradient 3.7% (225 ft/NM).

See Note 1 and Note 2.

Note 1: Missed approach for acft utilizing climb gradient 2.5% (152 ft/NM).

At R 305 YNN/1 DME Fix turn right to track 297°, intercept and follow R 252 YNN.

At R 252 YNN/13 DME Fix turn right and proceed to YNN, intercept and follow R 140 YNN.

At R 140 YNN/5 DME Fix turn right to YNN. Enter the holding pattern. Climb 9000 ft.

nm from/to THR RWY 14
AERODROME ELEV 1558 ft

OCA (H)	A	B	C	D
Straight-in Approach	N/A			
Circling South of RWY	3300 (1750)	3400 (1850)	N/A	

Note 2
Minimum OCA (H) for aircraft utilising a 2.5% missed approach gradient.

OCA (H)	A	B	C	D
Straight-in Approach	N/A			
Circling South of RWY	3500 (1950)	3600 (2050)	N/A	

Note 3
Coordinates of significant points

IF : R 305 YNN/15 DME fix : 40°04'12.89"N, 021°59'42.55"E
 SDF : R 305 YNN/13 DME fix : 39°50'22.19"N, 020°36'19.53"E
 FAF : R 305 YNN/10 DME fix : 39°48'26.56"N, 020°39'19.09"E
 SDF : R 305 YNN/5 DME fix : 39°45'13.39"N, 020°44'18.17"E
 MAPt : R 305 YNN/1 DME fix : 39°42'38.77"N, 020°48'17.03"E
 TP of Missed Approach : R 252 YNN/13 DME fix : 39°39'01.50"N, 020°32'51.22"E