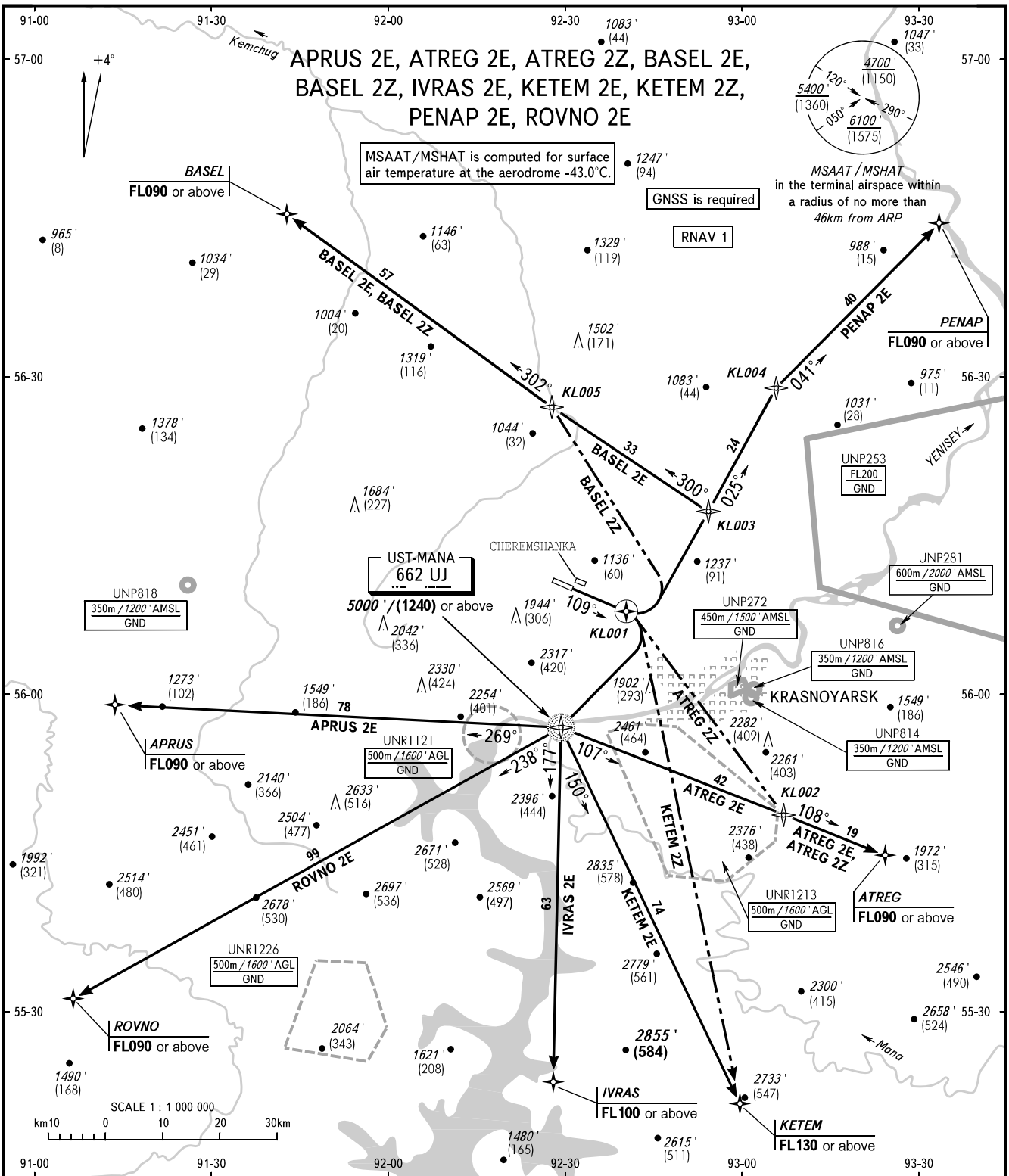


STANDARD DEPARTURE CHART
INSTRUMENT (SID) - ICAO

TRANSITION ALT: 7000'
TRANSITION HGT: (1850)

KRASNOYARSK, RUSSIA
KRASNOYARSK
RNAV RWY 11



MSAAT/MSHAT is computed for surface air temperature at the aerodrome -43.0°C.

GNS is required

MSAAT/MSHAT in the terminal airspace within a radius of no more than 46km from ARP

RNAV 1

UST-MANA
662 UJ

KRASNOYARSK

TOWER 118.300
RADAR 122.000
APPROACH 127.700

WARNING
CCO are applicable in case of low air traffic intensity.
MINIMUM CLIMB GRADIENT (due to airspace structure):
ATREG 2Z, KETEM 2Z: 4.0% up to 4400'/(1055).

BEARINGS AND TRACKS ARE MAGNETIC
ALTITUDES IN FEET
HEIGHTS IN METRES
ELEVATIONS IN FEET AND METRES
DISTANCES IN KILOMETRES

Alt set: -QNH(QFE on req);
-hPa(mm on req).