

STANDARD DEPARTURE CHART-INSTRUMENT

RJCC / NEW CHITOSE

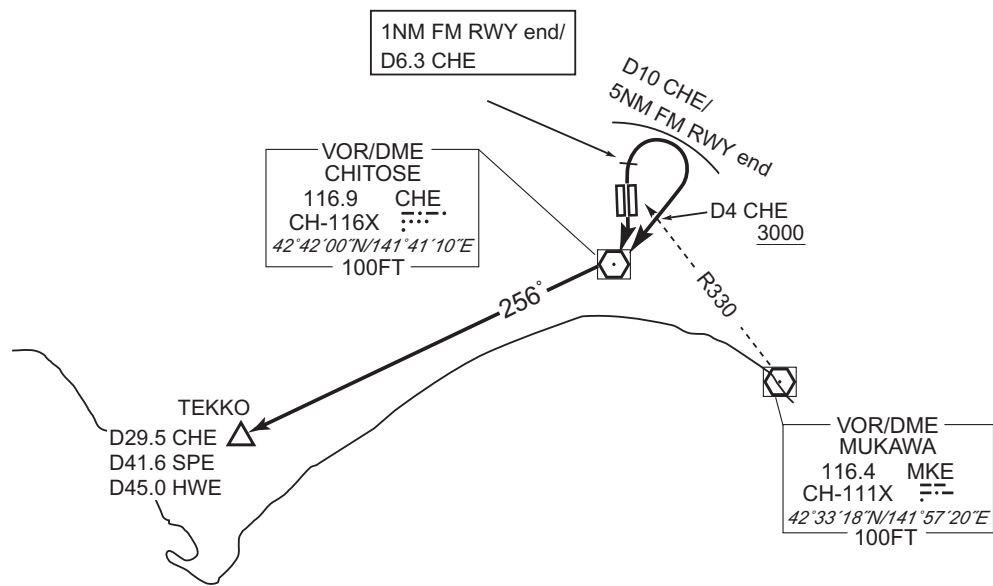
SID

TEKKO ONE DEPARTURE

RWY01L/01R : Climb RWY HDG until 1NM FM RWY end/CHE 6.3DME,
 turn right, direct to CHE VOR/DME
 within CHE 10DME (5NM FM RWY end), cross 4DME prior to
 CHE VOR/DME (MKE R330) at or above 3000FT,...

RWY19R/19L : Climb direct to CHE VOR/DME,...

...via CHE R256 to TEKKO.



CHANGE : Description of PROC name.