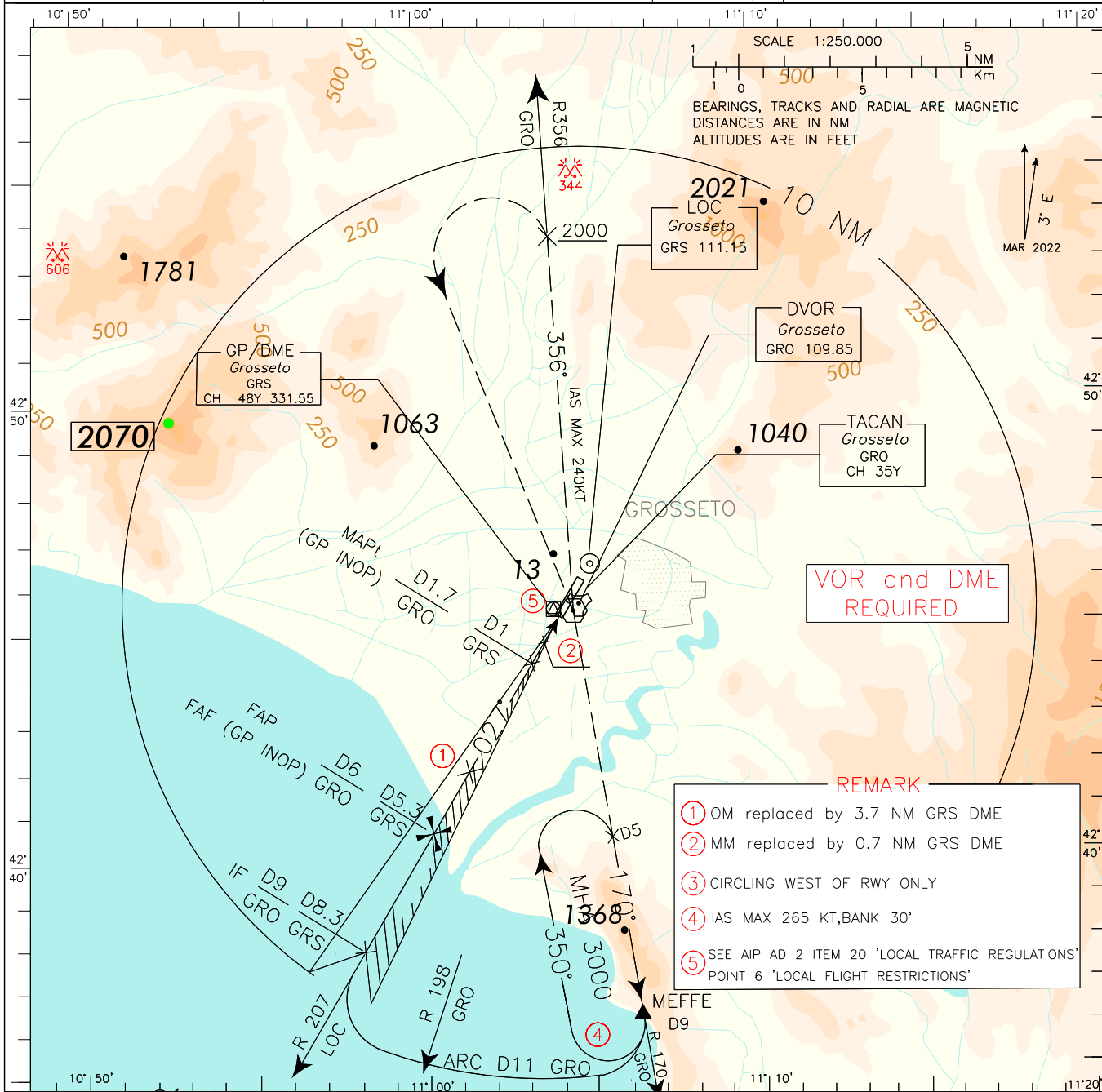


ICAO - INSTRUMENT APPROACH CHART

<p>WARNING: Seagulls concentration 2500 m before THR 03L, 600 m left side.</p>	APP Grosseto APP/Radar	124.525	AD ELEV	L R S	<p>GROSSETO ILS or LOC-Z RWY 03L</p>
	TWR Grosseto TWR	128.105 124.525	20		

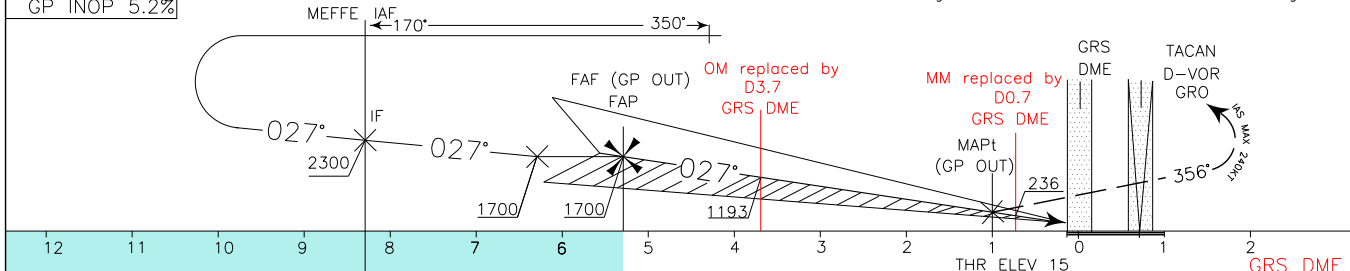
DOC 8168 ED 6-2014

CHANGE: MAG VAR UPDATED



- REMARK**
- ① OM replaced by 3.7 NM GRS DME
 - ② MM replaced by 0.7 NM GRS DME
 - ③ CIRCLING WEST OF RWY ONLY
 - ④ IAS MAX 265 KT, BANK 30°
 - ⑤ SEE AIP AD 2 ITEM 20 'LOCAL TRAFFIC REGULATIONS' POINT 6 'LOCAL FLIGHT RESTRICTIONS'

TRANSITION ALT 6000
 MISSED APPROACH: As soon as practicable (in any case not before 1 NM GRS DME before THR 03L), turn left (IAS MAX 240KT) to join RDL 356 GRO VOR (TR-356°), climbing to 3000 ft. Passing 2000 ft, not further than 10 DME, turn left bound to GRO VOR. Then proceed on R-170 GRO (TR-170°) to MEFFE holding fix. Hold between D5 and D9 GRO DME, inbound TR-170°, right turn, IAS MAX 265 KT and Bank Angle 30°.



13 GRO TACAN	12	11	10	9	8	7	6	5	4	3	2	1	0	1	2	NM
OCA (OCH)	A	B	C	D												
ILS CAT 1	355 (340)		365 (350)	375 (360)												
GP INOP	400 (385)															
CIRCLING ③	520 (510)		720 (710)	1550 (1540)												

GS	FT PER MIN	GRS DME	ALT (HGT)
90	470	5	1607 (1592)
120	630	4	1288 (1273)
150	790	3	970 (955)
180	950	2	651 (636)
210	1110	1	332 (317)

MNM SECT ALT VOR	SECT ALT GRO
5400	8000
075	345
3500	

Edited by AM - CIGA