


WAAS CH 40303 W21A	APP CRS 211°	Rwy Idg TDZE Apt Elev	7110 404 410
--	------------------------	-----------------------------	---

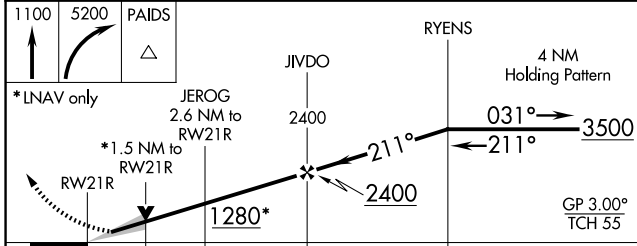
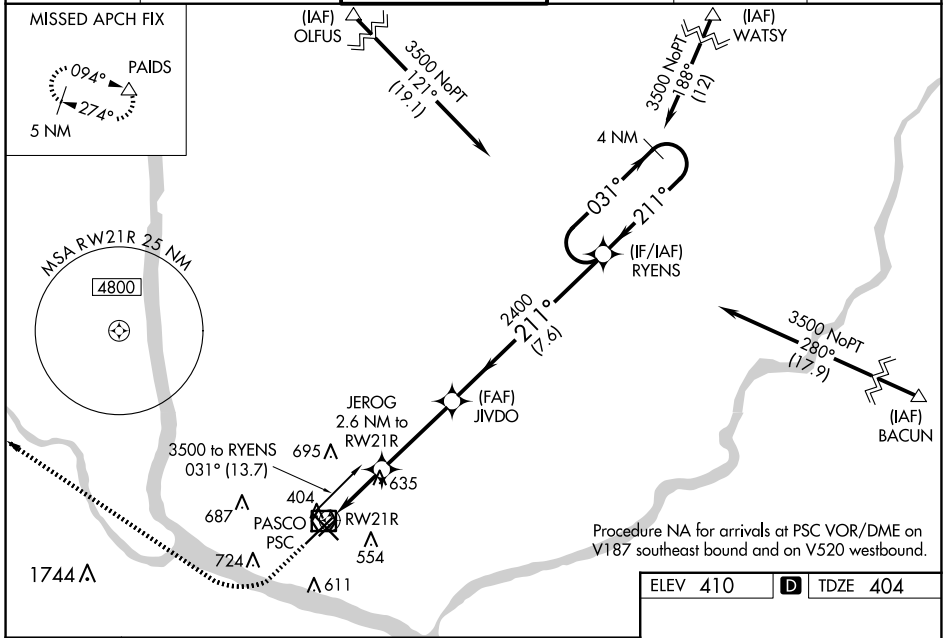
RNAV (GPS) Y RWY 21R

TRI-CITIES (PSC)

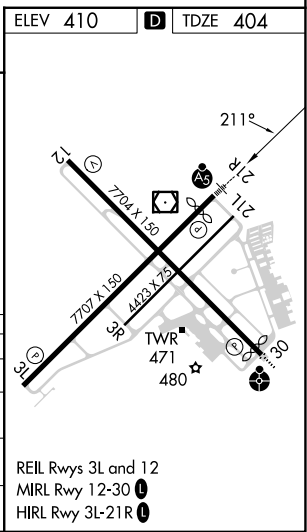
⚠ Baro-VNAV NA when using Hermiston altimeter setting. For uncompensated Baro-VNAV systems, LNAV/VNAV NA below -1.4°C (7°F) or above 54°C (130°F).
⚠ DME/DME RNP-0.3 NA. VDP NA with Hermiston altimeter setting. When local altimeter setting not received, use Hermiston altimeter setting and increase all DA 95 feet and all MDA 100 feet; increase LNAV/VNAV all Cats visibility 3/8 mile; LNAV Cat C and D visibility 3/8 mile and Circling Cat C and D visibility 1/4 mile.
 # RVR 1800 authorized with use of FD or AP or HUD to DA, NA when using Hermiston altimeter setting.

MALSR

MISSED APPROACH:
 Climb to 1100 then climbing right turn to 5200 direct PAIDS and hold, continue climb-in-hold to 5200.

ATIS 125.65	SPOKANE APP CON* 128.75 377.2	TRI-CITIES TOWER* 135.3 (CTAF) 323.3	GND CON 121.8	CLNC DEL 120.0	UNICOM 122.95
-----------------------	---	--	-------------------------	--------------------------	-------------------------



CATEGORY	A	B	C	D
LPV DA#		604/24	200 (200-1/2)	
LNAV/VNAV DA		844/51	440 (500-1)	
LNAV MDA	940/24	536 (600-1/2)	940/55	536 (600-1)
C CIRCLING	940-1	530 (600-1)	1040-1 3/4 630 (700-1 3/4)	1100-2 1/4 690 (700-2 1/4)



NW-1, 20 MAR 2025 to 17 APR 2025

NW-1, 20 MAR 2025 to 17 APR 2025