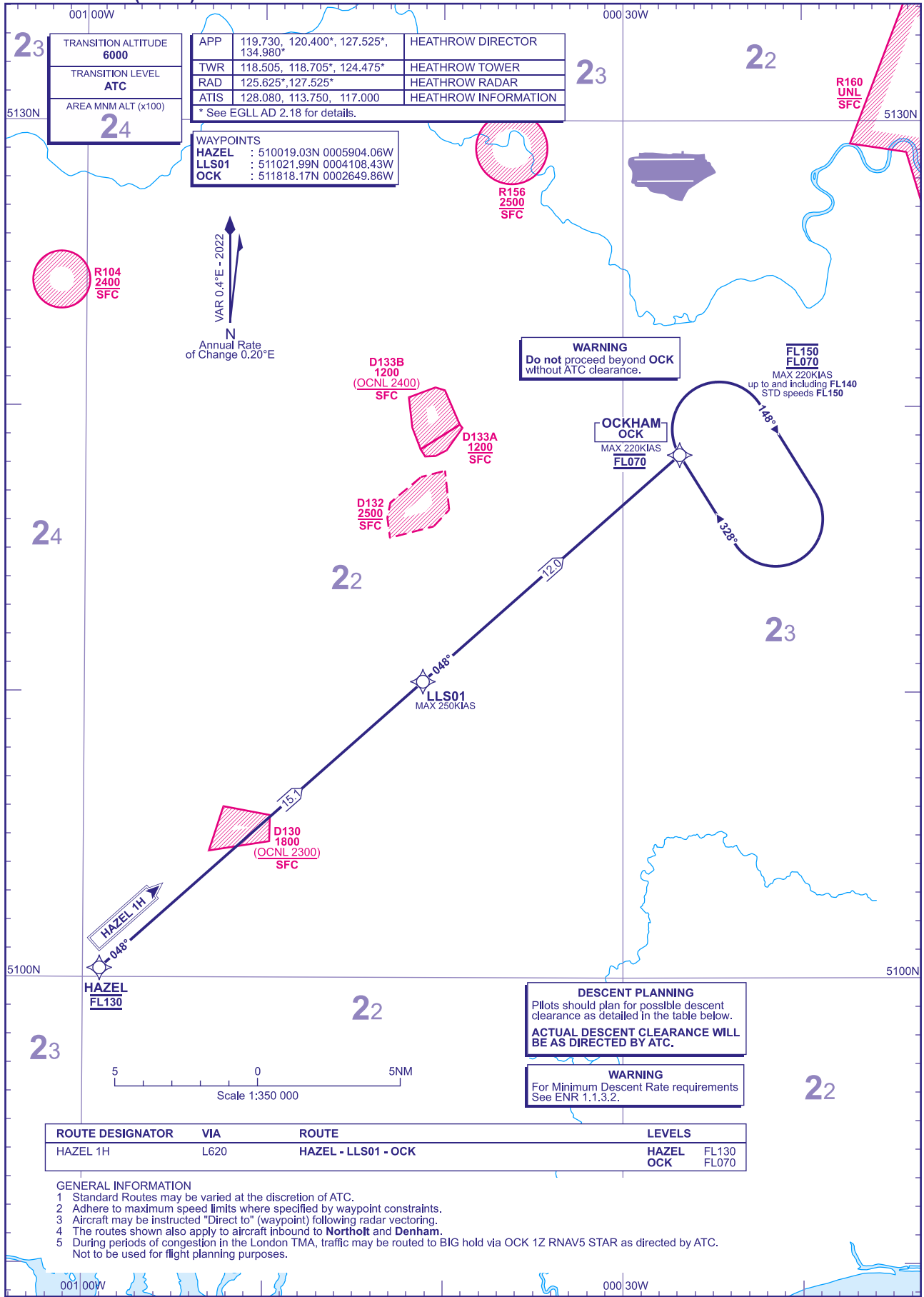


RNAV5 (DME/DME or GNSS) STANDARD ARRIVAL CHART - INSTRUMENT (STAR) - ICAO

DISTANCES IN NAUTICAL MILES
TRACKS ARE MAGNETIC
ALTITUDES AND ELEVATIONS ARE IN FEET

LONDON HEATHROW
HAZEL 1H



TRANSITION ALTITUDE 6000	APP 119.730, 120.400*, 127.525*, 134.980*	HEATHROW DIRECTOR
TRANSITION LEVEL ATC	TWR 118.505, 118.705*, 124.475*	HEATHROW TOWER
AREA MNM ALT (x100) 24	RAD 125.625*, 127.525*	HEATHROW RADAR
	ATIS 128.080, 113.750, 117.000	HEATHROW INFORMATION

* See EGLL AD 2.18 for details.

WAYPOINTS	
HAZEL	: 510019.03N 0005904.06W
LLS01	: 511021.99N 0004108.43W
OCK	: 511818.17N 0002649.86W



WARNING
Do not proceed beyond OCK
without ATC clearance.

**FL150
FL070**
MAX 220KIAS
up to and including FL140
STD speeds FL150

**OCKHAM-
OCK**
MAX 220KIAS
FL070

DESCENT PLANNING
Pilots should plan for possible descent
clearance as detailed in the table below.
**ACTUAL DESCENT CLEARANCE WILL
BE AS DIRECTED BY ATC.**

WARNING
For Minimum Descent Rate requirements
See ENR 1.1.3.2.

ROUTE DESIGNATOR	VIA	ROUTE	LEVELS
HAZEL 1H	L620	HAZEL - LLS01 - OCK	HAZEL FL130 OCK FL070

GENERAL INFORMATION

- Standard Routes may be varied at the discretion of ATC.
- Adhere to maximum speed limits where specified by waypoint constraints.
- Aircraft may be instructed "Direct to" (waypoint) following radar vectoring.
- The routes shown also apply to aircraft inbound to **Northolt** and **Denham**.
- During periods of congestion in the London TMA, traffic may be routed to BIG hold via OCK 1Z RNAV5 STAR as directed by ATC.
Not to be used for flight planning purposes.