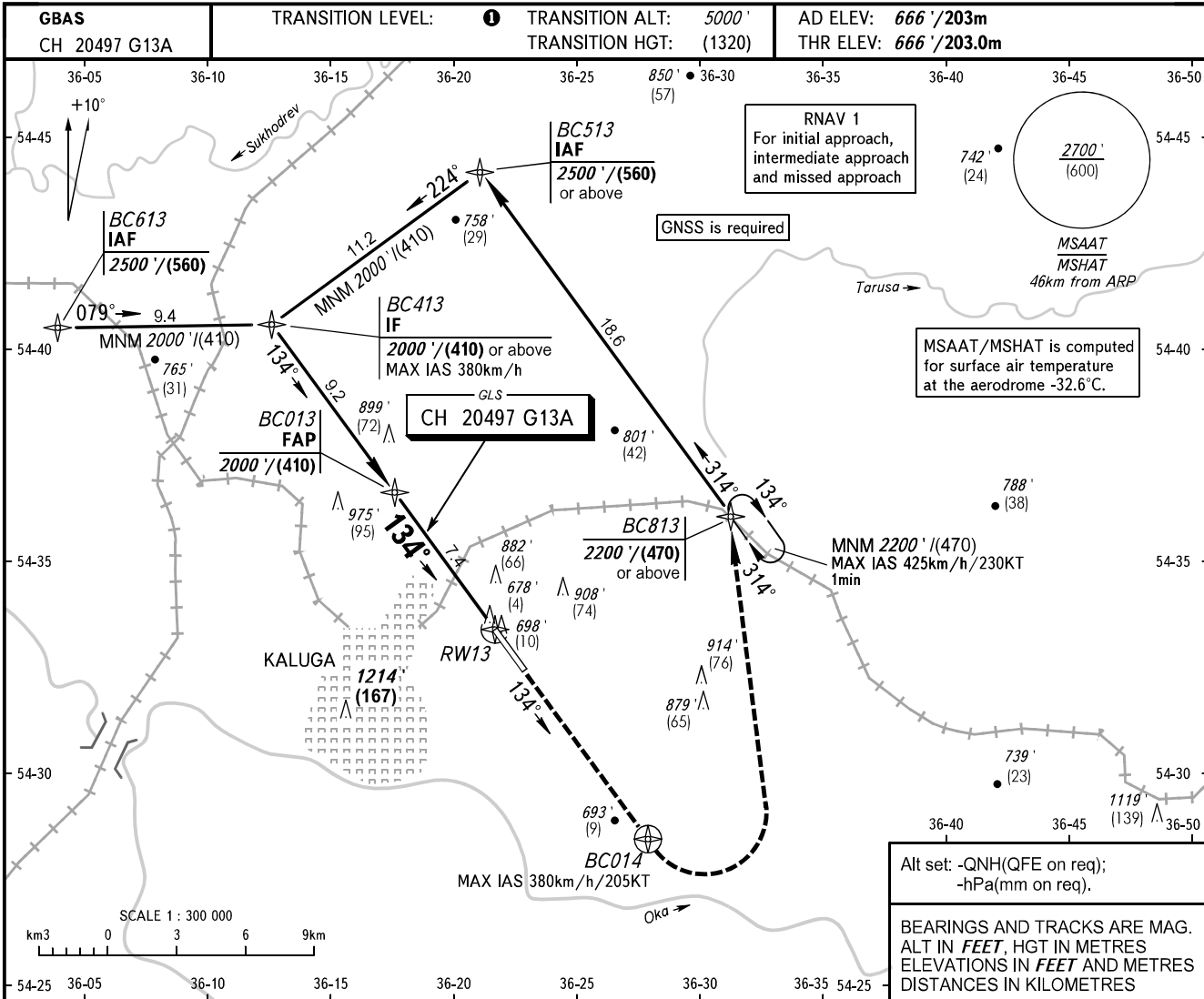


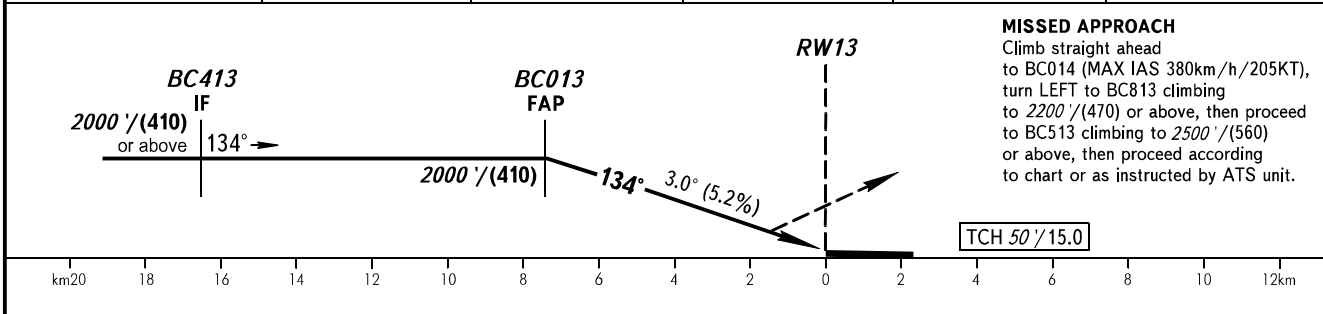
**INSTRUMENT
APPROACH
CHART - ICAO**

KALUGA TOWER 120.300

**KALUGA, RUSSIA
GRABTSEVO
GLS RWY 13**



DIST to RW13	7.4	7.0	5.0	3.0	2.0
ALTITUDE/HEIGHT	2000'/(410)	1935'/(390)	1585'/(280)	1235'/(175)	1065'/(125)



OCA(H)		A	B	C	D						
Straight-in Approach	CAT I	815' (149') (46)	823' (157') (48)	833' (167') (51)	843' (177') (54)						
Circling		1180' (520') (160)	1210' (550') (170)	1310' (650') (200)	1360' (700') (220)						
GROUND SPEED	km/h		150	180	210	240	270	300	330	360	390
	kt		81	97	113	130	146	162	178	194	211
RATE OF DESCENT	m/s		2.2	2.6	3.0	3.5	3.9	4.3	4.8	5.2	5.6
	ft/min		427	512	597	682	768	853	938	1024	1109

TRANSITION LEVEL:
 - FL060 when QNH is 1013 hPa (760mm mercury column) or above;
 - FL070 when QNH is 977 hPa (733mm mercury column) or above, but less than 1013 hPa (760mm mercury column);
 - FL080 when QNH is less than 977 hPa (733mm mercury column).

WARNING
 Visual manoeuvring west of AD is PROHIBITED.

CHANGE: New chart