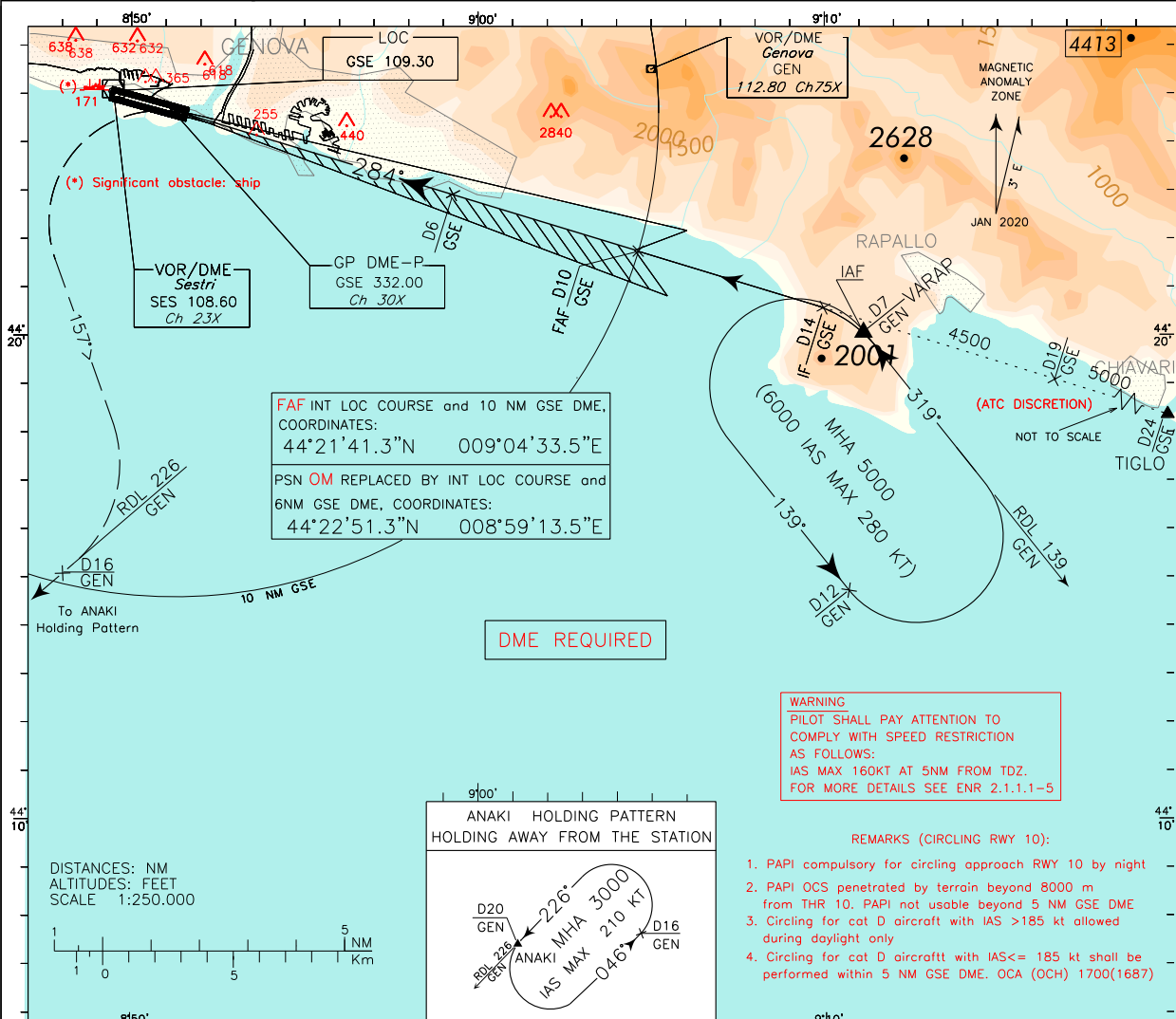


ICAO - INSTRUMENT APPROACH CHART

DOC 8168 ED.5 - 2006 AMDT 2
CHANGE: GEN NDB DISMISSED AND ATIS FREQ UPDATED

WARNING: The LOC course is off-set 1.52° South from RCL	APP	Genova APP	119.600	AD ELEV	13	L M J	GENOVA/SESTRI ILS - Y RY 28
	TWR	Genova Radar	119.600 (119.850)				
		Genova TWR	118.600				
	ATIS	Genova Terminal Information	122.830				



FAF INT LOC COURSE and 10 NM GSE DME, COORDINATES:
44°21'41.3"N 009°04'33.5"E

PSN OM REPLACED BY INT LOC COURSE and 6NM GSE DME, COORDINATES:
44°22'51.3"N 008°59'13.5"E

DME REQUIRED

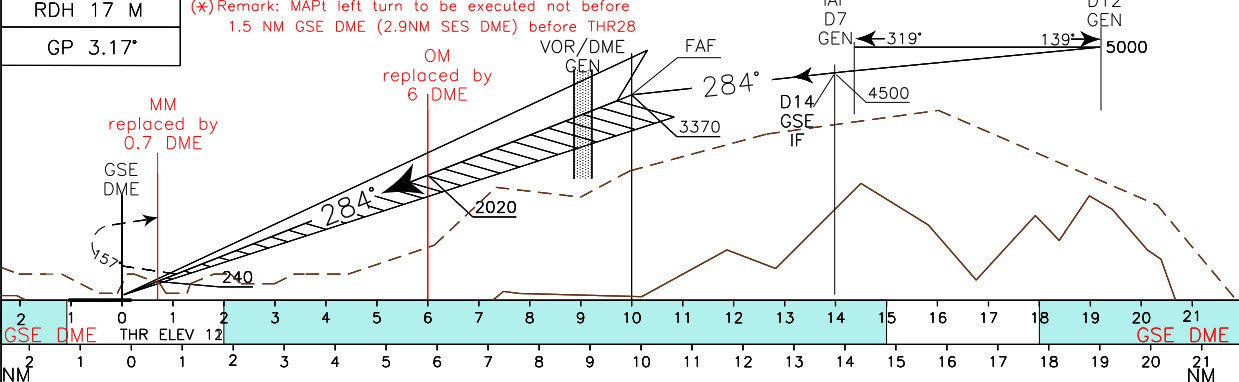
WARNING
PILOT SHALL PAY ATTENTION TO COMPLY WITH SPEED RESTRICTION AS FOLLOWS:
IAS MAX 160KT AT 5NM FROM TDZ.
FOR MORE DETAILS SEE ENR 2.1.1.1-5

ANAKI HOLDING PATTERN HOLDING AWAY FROM THE STATION

REMARKS (CIRCLING RWY 10):

1. PAPI compulsory for circling approach RWY 10 by night
2. PAPI OCS penetrated by terrain beyond 8000 m from THR 10. PAPI not usable beyond 5 NM GSE DME
3. Circling for cat D aircraft with IAS >185 kt allowed during daylight only
4. Circling for cat D aircraft with IAS ≤ 185 kt shall be performed within 5 NM GSE DME. OCA (OCH) 1700(1687)

TRANSITION ALT 7000 MISSED APPROACH: On MAPt turn left (*) as soon as practicable (IAS MAX 200 kt) on heading 157° to join and follow RDL 226 GEN VOR/DME climbing to 3000 ft and proceed to ANAKI (RDL 226/20 NM GEN VOR/DME) holding pattern.



STRAIGHT IN APPROACH	OCA (OCH)	A	B	C	D	SEE REMARKS 1, 2, 3 and 4 CIRCLING NOT ALLOWED allowed only south of the RWY	GS	FT PER MIN	D6-00.7 5.3 NM	D0.7-THR 0.52 NM	GSE DME	ALT (HGT)	MSA 25NM GEN VOR 8300 5200	
	ILS CAT I	570(558)	580(568)	590(578)	600(588)									80
CIRCLING	GP INOP	VEDI LOC Y / SEE LOC Y												
		740(727)	760(747)	1360(1347)	3020(3007)	(3) (4)								