

WAAS CH 73009 W09A	APP CRS 085°	Rwy Idg TDZE Apt Elev	7985 6144 6160
--	------------------------	-----------------------------	---

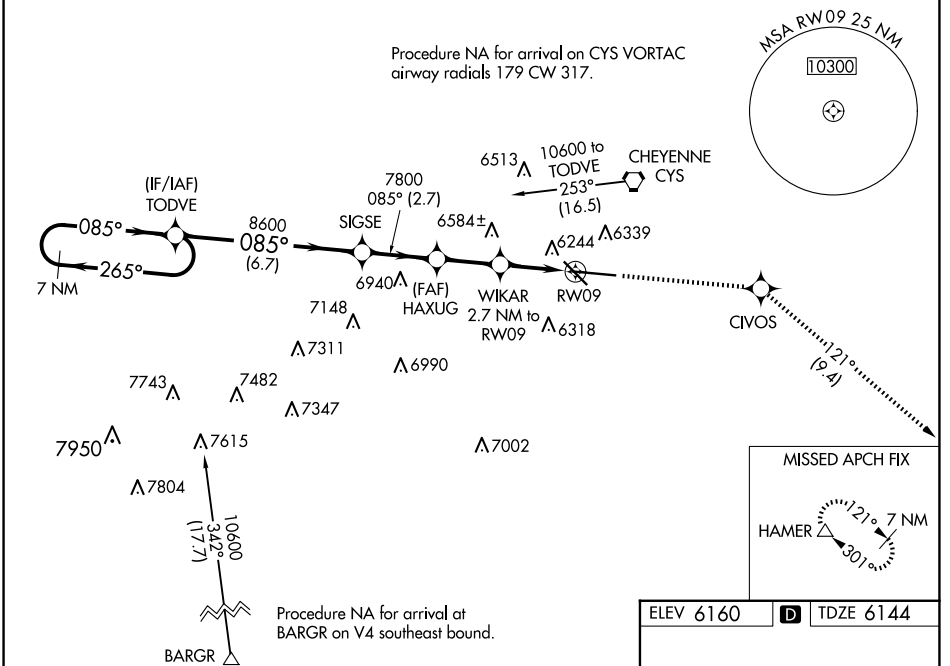
RNAV (GPS) RWY 9

CHEYENNE RGNL/JERRY OLSON FLD (CYS)

⚠ For uncompensated Baro-VNAV systems, LNAV/VNAV NA below -27°C (-16°F) or above 36°C (96°F). DME/DME RNP-0.3 NA. Rwy 9 helicopter visibility reduction below ¾ SM NA.

MISSED APPROACH: Climb to 8500 direct CIVOS and on track 121° to HAMER and hold.

ATIS 134.425 278.3	CHEYENNE APP CON* 124.55 263.075	CHEYENNE TOWER* 118.7(CTAF) 0 257.8	GND CON 121.9 254.275	UNICOM 122.95
------------------------------	--	--	---------------------------------	-------------------------



7 NM Holding Pattern	TODVE	SIGSE	HAXUG	WIKAR	*RNAV only
10600 ← 265°	← 085°	8600	7800	2.7 NM to RWY 09	*1.1 NM to RWY 09
GP 3.00° TCH 50	6.7 NM	2.7 NM	2.3 NM	1.6 NM	1.1 NM
CATEGORY	A	B	C	D	
LPV DA	6473-1¼		329 (400-1¼)		
LNAV/VNAV DA	6543-1½		399 (400-1½)		
LNAV MDA	6540-1		396 (400-1)		6540-1¼ 396 (400-1¼)
C CIRCLING	6640-1 480 (500-1)		6900-2 740 (800-2)		6940-2½ 780 (800-2½)

ELEV 6160 **D** TDZE 6144

85° to RWY 09

REIL Rwy 9, 13, and 31 **⓪**
HIRL Rwy 9-27 **⓪**
MIRL Rwy 13-31 **⓪**

NW-1, 20 MAR 2025 to 17 APR 2025

NW-1, 20 MAR 2025 to 17 APR 2025