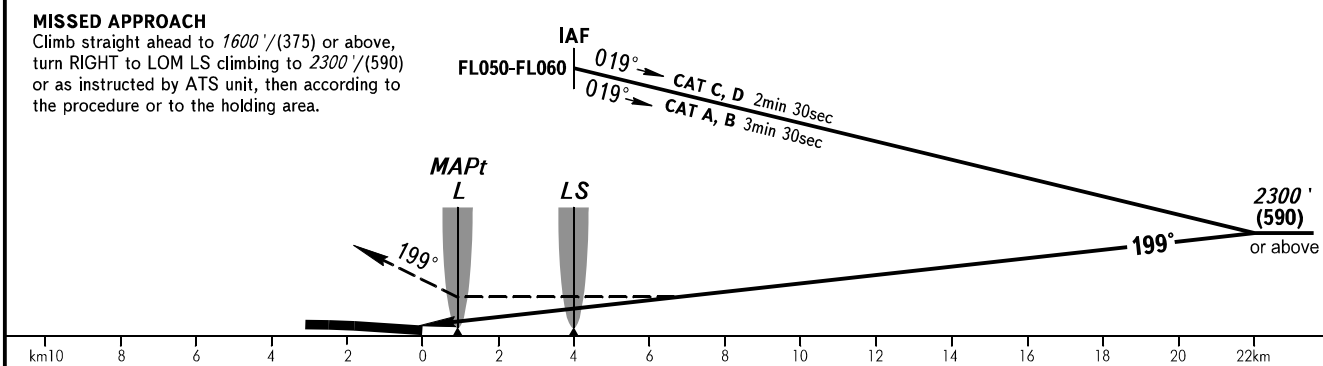
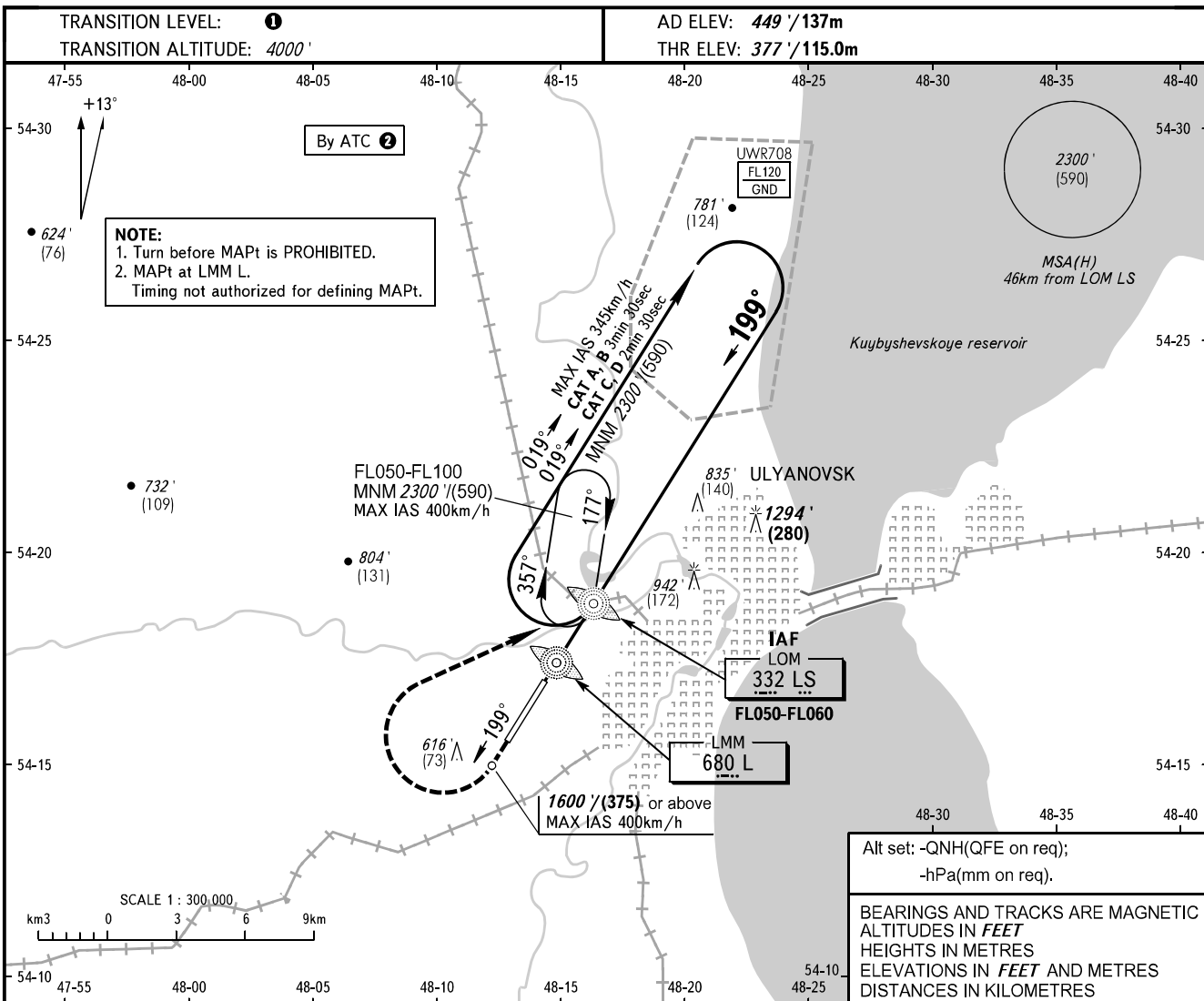


**INSTRUMENT
APPROACH
CHART - ICAO**

**ULYANOVSK, RUSSIA
BARATAYEVKA
NDB X RWY 20**

RADAR	120.800
PRECISION	120.400



OCA(H)		A	B	C	D						
Straight-in	NDB (LMM)	1130' (760')	1130' (760')	1130' (760')	1130' (760')						
	Approach										
Circling		1130' (760')	1130' (760')	1340' (890')	1340' (890')						
GROUND SPEED		km/h	150	180	210	240	270	300	330	360	390
RATE OF DESCENT		m/s	2.2	2.6	3.0	3.5	3.9	4.3	4.8	5.2	5.6
		ft/min	427	512	597	682	768	853	938	1024	1109

1 TRANSITION LEVEL:
 - FL050 when QNH is 1013 hPa (760mm mercury column) or above;
 - FL060 when QNH is 977 hPa (733mm mercury column) or above, but less than 1013 hPa (760mm mercury column);
 - FL070 when QNH is less than 977 hPa (733mm mercury column).

2 When restricted area UWR708 is active.

3 Visual manoeuvring east of the AD is PROHIBITED.