

STANDARD ARRIVAL CHART -INSTRUMENT

RJCK / KUSHIRO

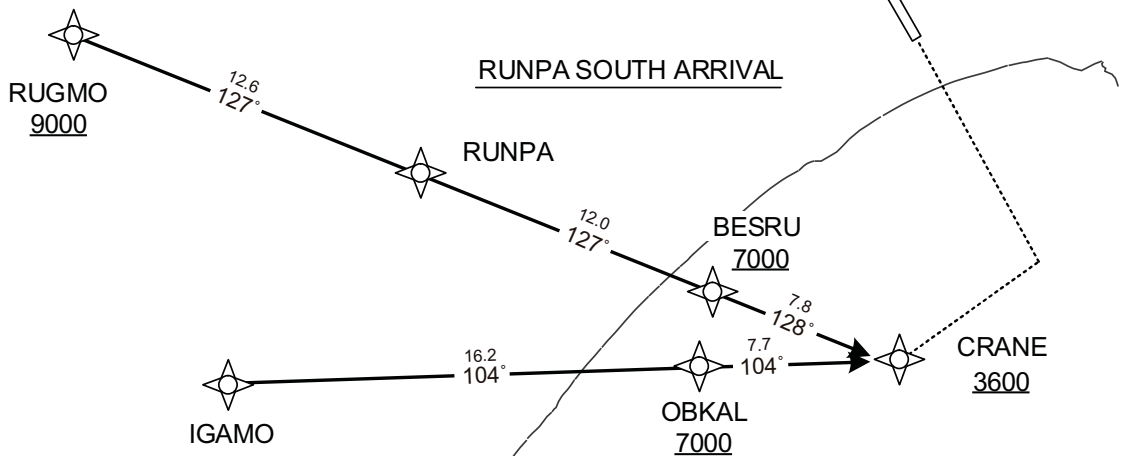
RNAV STAR RWY35

IGAMO SOUTH ARRIVAL / RUGMO SOUTH ARRIVAL RUNPA SOUTH ARRIVAL	RNP1
--	------

Note GNSS required.

VAR 9°W

RUGMO SOUTH ARRIVAL



CHANGE : Description of latitude and longitude.

STANDARD ARRIVAL CHART -INSTRUMENT

RJCK / KUSHIRO

RNAV STAR RWY35

IGAMO SOUTH ARRIVAL

From IGAMO, to OBKAL at or above 7000FT, to CRANE at or above 3600FT.

Serial Number	Path Descriptor	Waypoint Identifier	Fly Over	Course °M(°T)	Magnetic Variation	Distance (NM)	Turn Direction	Altitude (FT)	Speed (KIAS)	Vertical Angle	Navigation Specification
001	IF	IGAMO	-	-	-9.2	-	-	-	-	-	RNP1
002	TF	OBKAL	-	104 (094.4)	-9.2	16.2	-	+7000	-	-	RNP1
003	TF	CRANE	-	104 (094.7)	-9.2	7.7	-	+3600	-	-	RNP1

RUGMO SOUTH ARRIVAL

From RUGMO at or above 9000FT, to RUNPA, to BESRU at or above 7000FT, to CRANE at or above 3600FT.

Serial Number	Path Descriptor	Waypoint Identifier	Fly Over	Course °M(°T)	Magnetic Variation	Distance (NM)	Turn Direction	Altitude (FT)	Speed (KIAS)	Vertical Angle	Navigation Specification
001	IF	RUGMO	-	-	-9.2	-	-	+9000	-	-	RNP1
002	TF	RUNPA	-	127 (118.0)	-9.2	12.6	-	-	-	-	RNP1
003	TF	BESRU	-	127 (118.1)	-9.2	12.0	-	+7000	-	-	RNP1
004	TF	CRANE	-	128 (118.3)	-9.2	7.8	-	+3600	-	-	RNP1

RUNPA SOUTH ARRIVAL

From RUNPA, to BESRU at or above 7000FT, to CRANE at or above 3600FT.

Serial Number	Path Descriptor	Waypoint Identifier	Fly Over	Course °M(°T)	Magnetic Variation	Distance (NM)	Turn Direction	Altitude (FT)	Speed (KIAS)	Vertical Angle	Navigation Specification
001	IF	RUNPA	-	-	-9.2	-	-	-	-	-	RNP1
002	TF	BESRU	-	127 (118.1)	-9.2	12.0	-	+7000	-	-	RNP1
003	TF	CRANE	-	128 (118.3)	-9.2	7.8	-	+3600	-	-	RNP1

Waypoint Coordinates

Waypoint Identifier	Coordinates
IGAMO	425112.6N / 1433614.5E
OBKAL	424955.3N / 1435815.3E
RUGMO	430433.6N / 1432949.1E
RUNPA	425838.2N / 1434501.8E
BESRU	425257.7N / 1435928.5E
CRANE	424916.8N / 1440846.6E

CHANGE : Waypoint Coordinates added.