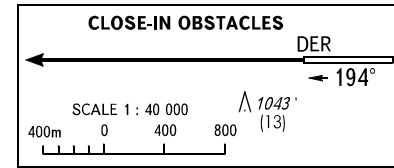
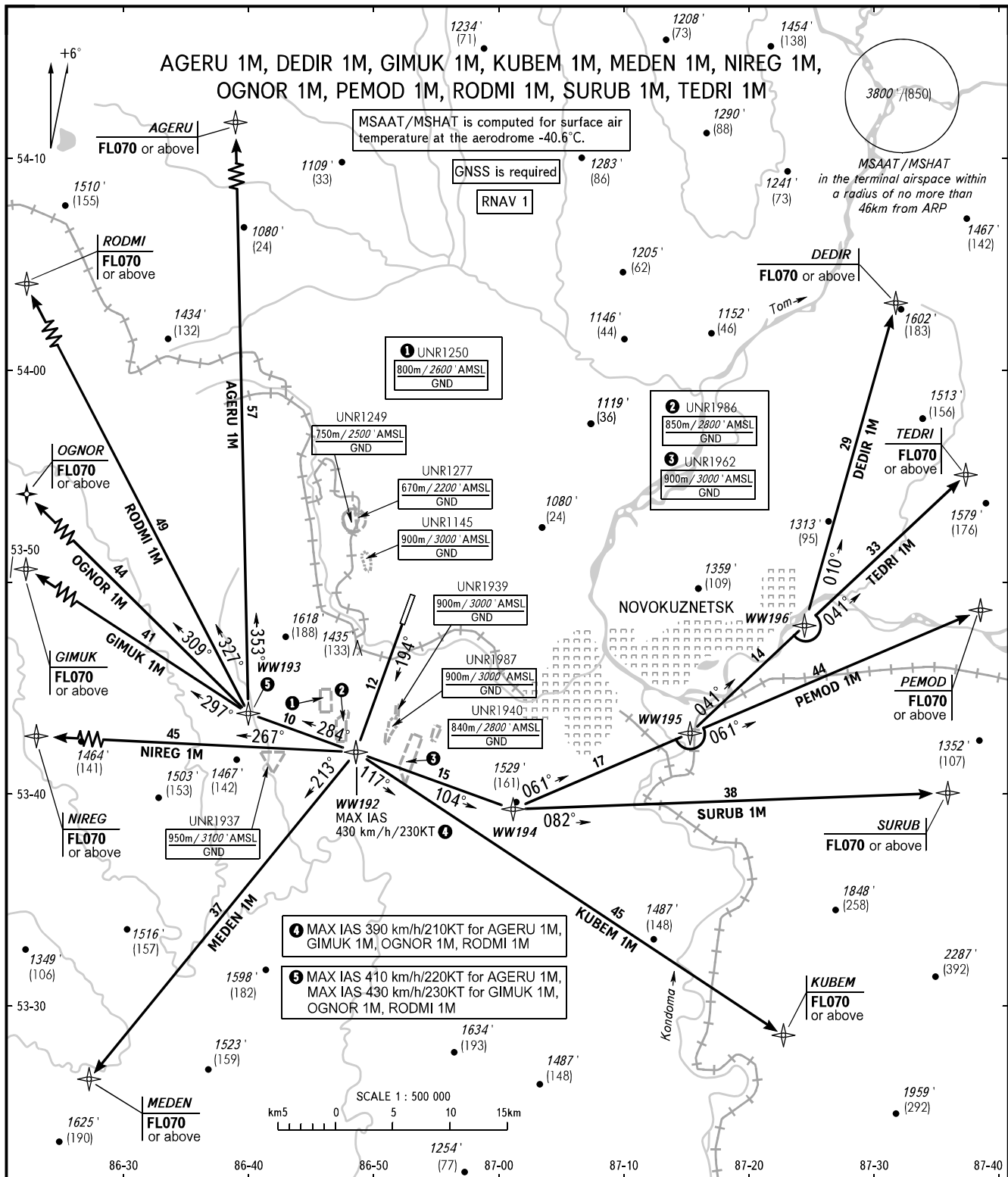


STANDARD DEPARTURE CHART
INSTRUMENT (SID) - ICAO

TRANSITION ALT: **4000'**
TRANSITION HGT: **(915)**

NOVOKUZNETSK, RUSSIA
SPICHENKOVO
RNAV RWY 19



- WARNING:**
- SID require permission to overfly UNR1939, UNR1986, UNR1987 (during their activity) or ATS unit coordination.
 - AGERU 1M, GIMUK 1M, MEDEN 1M, NIREG 1M, OGNOR 1M, RODMI 1M require permission to overfly UNR1250, UNR1937 (during their activity) or ATS unit coordination.
 - DEDIR 1M, KUBEM 1M, PEMOD 1M, SURUB 1M, TEDRI 1M require permission to overfly UNR1940, UNR1962, (during their activity) or ATS unit coordination.

BEARINGS AND TRACKS ARE MAGNETIC
ALTITUDES IN **FEET**, HEIGHTS IN METRES
ELEVATIONS IN **FEET** AND METRES
DISTANCES IN KILOMETRES

Alt set: -QNH(QFE on req);
-hPa(mm on req).

CHANGE: New chart