

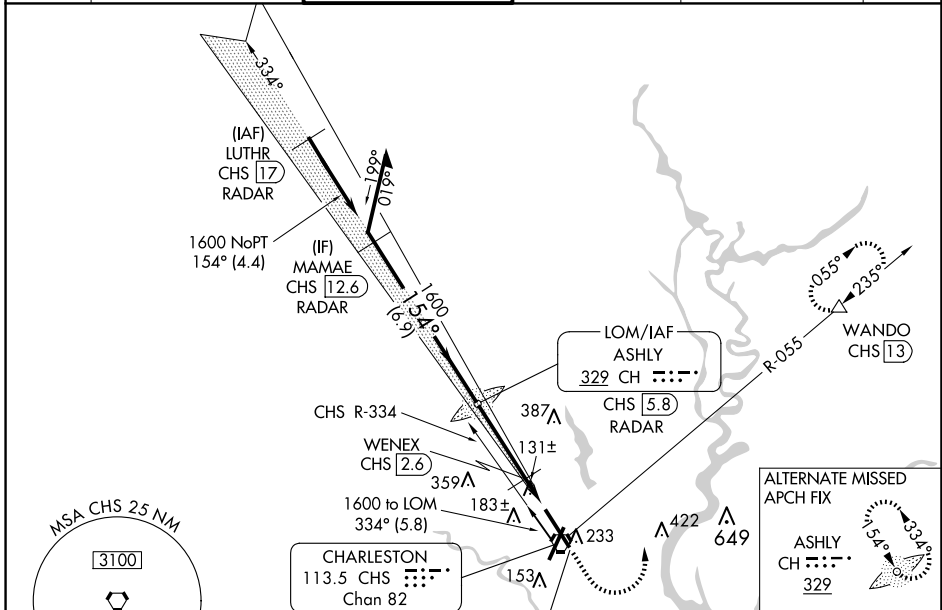
LOC I-CHS 109.7	APP CRS 154°	Rwy Idg TDZE Apt Elev	9001 43 46
---------------------------	------------------------	-----------------------------	---------------------------------------

ILS or LOC RWY 15

CHARLESTON AFB/INTL (CHS)

DME required.		ALSF-2	MISSED APPROACH: Climb to 500 then climbing left turn to 3500 on CHS VORTAC R-055 to WANDO/CHS VORTAC 13 DME and hold, continue climb-in-hold to 3500.
For inop ALS, increase S-ILS 15 Cat E visibility to RVR 4000 and S-LOC 15 Cats C/D/E visibility to RVR 5500. DME from CHS VORTAC. Simultaneous reception of I-CHS and CHS DME required.			

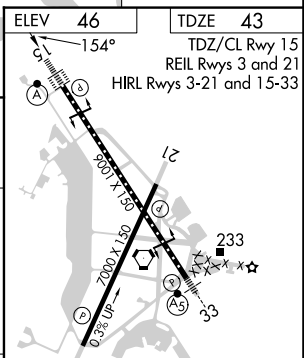
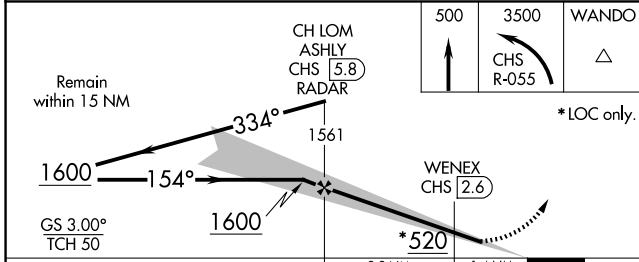
D-ATIS 124.75	CHARLESTON APP CON 120.7 306.925	CHARLESTON TOWER 126.0 239.0	GND CON 121.9 348.6	CLNC DEL 127.325 291.65	CPDLC
-------------------------	--	--	-------------------------------	-----------------------------------	-------



SE-2, 20 MAR 2025 to 17 APR 2025

SE-2, 20 MAR 2025 to 17 APR 2025

LOCALIZER 109.7 I-CHS	ELEV 46	TDZE 43
	154°	TDZ/CL Rwy 15
		REIL Rwys 3 and 21
		HIRL Rwys 3-21 and 15-33



CATEGORY	A	B	C	D	E
S-ILS 15	243/18		200 (200-½)		
S-LOC 15	400/24	357 (400-½)	400/30	357 (400-¾)	
CIRCLING	540-1	494 (500-1)	540-1½ 494 (500-1½)	740-2¼ 694 (700-2¼)	740-2½ 694 (700-2½)

FAF to MAP 4.6 NM					
Knots	60	90	120	150	180
Min:Seq	4:36	3:04	2:18	1:50	1:32