

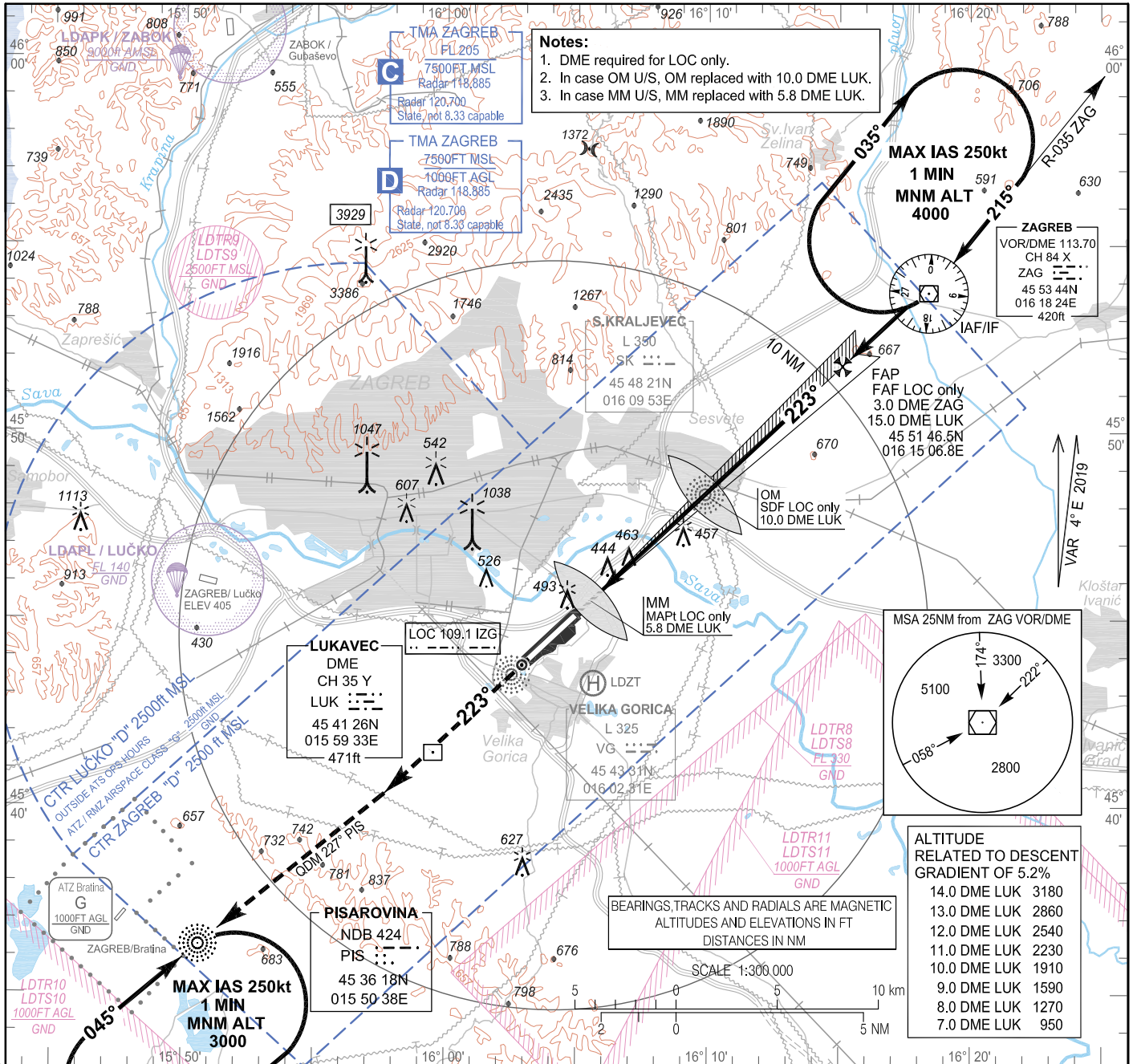
INSTRUMENT APPROACH
CHART-ICAO

AD ELEV 353
HEIGHTS RELATED
TO THR 22 ELEV 348

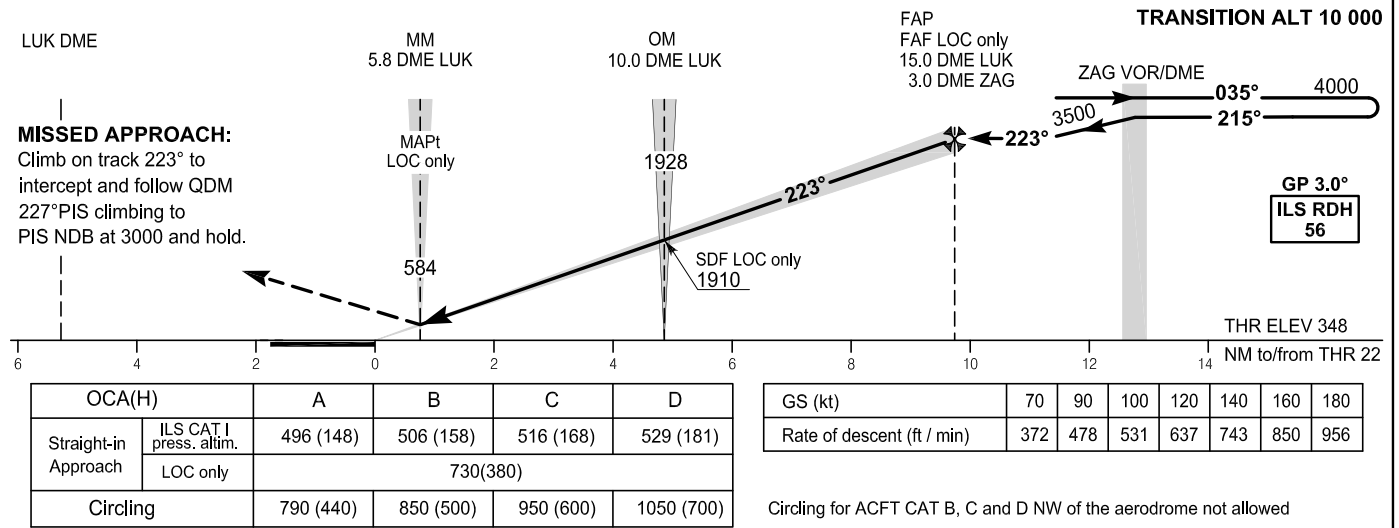
ZAGREB ATIS	124.575
ZAGREB RADAR	118.885
ZAGREB RADAR	120.700 State, not 8.33 capable
ZAGREB TOWER	118.300

ZAGREB / Franjo Tuđman (LDZA)

ILS y or LOC y RWY 22



Change: ZAGREB RADAR frequency; Parachuting zones updated; Heliport LDZT added; Editorial.



ZAGREB / Franjo Tuđman (LDZA)

ILS y or LOC y RWY 22

AERONAUTICAL DATABASE REQUIREMENTS

Conventional procedure essential fixes/points

ILS y or LOC y RWY 22

LOC only - final approach descent angle: 3.00°

Fix identification	Coordinates	True bearing or ARC distance providing track	True bearing or distance providing intersection
IAF/IF (ZAG VOR/DME)	45 53 44.01N 016 18 24.11E	-	-
FAF LOC only	45 51 46.5N 016 15 06.8E	226.81° (IZG LOC)	15.02 DME LUK 3.02 DME ZAG
SDF LOC only (OM 22)	45 48 20.56N 016 09 52.34E	226.81° (IZG LOC)	10.00 DME LUK
MAPt LOC only (MM 22)	45 45 29.91N 016 05 31.84E	226.81° (IZG LOC)	5.84 DME LUK

Change: ZAGREB RADAR frequency, Parachuting zones updated; Heliport LDZT added; Editorial