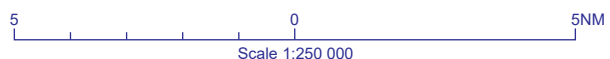
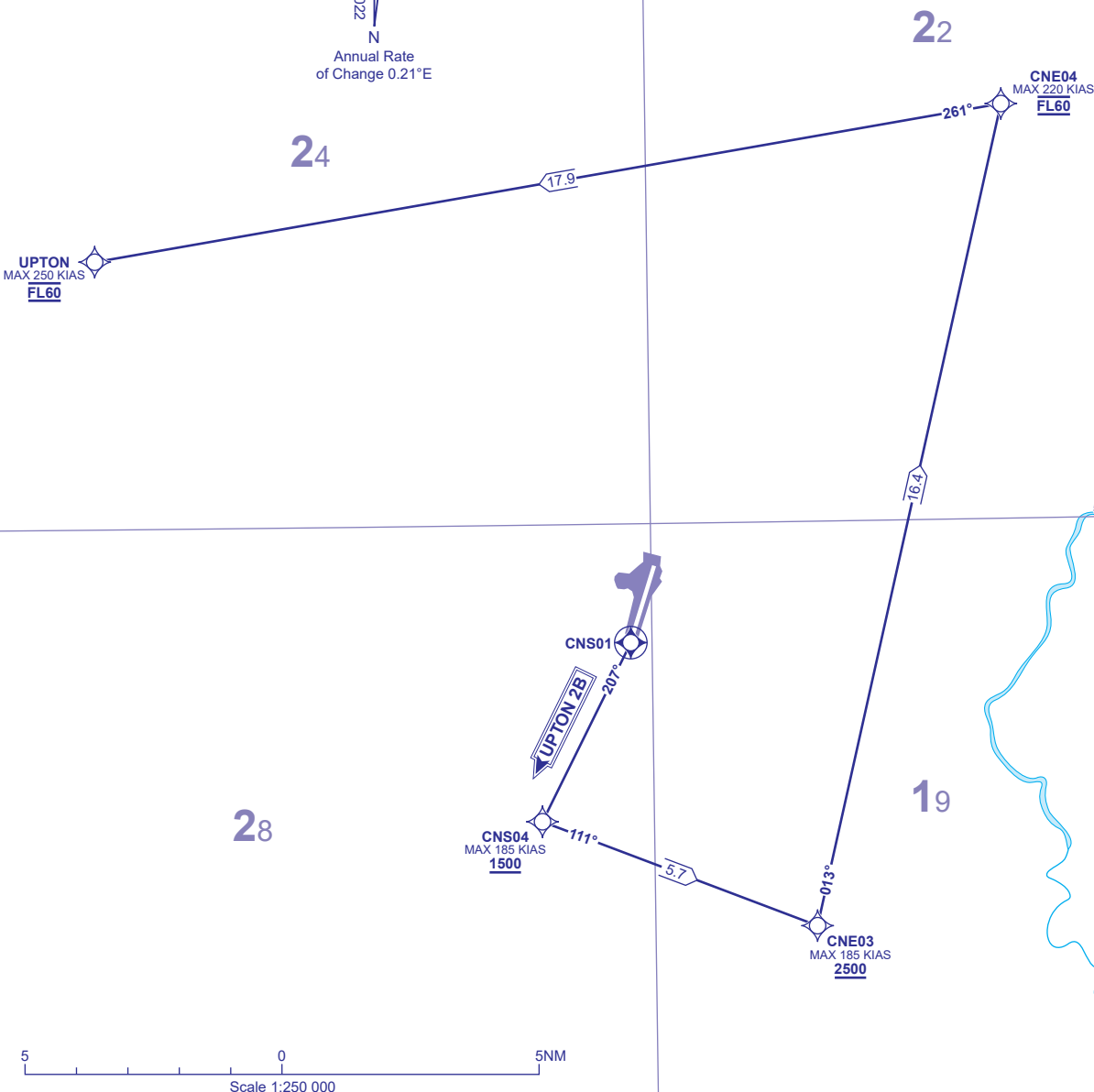


TRANSITION ALTITUDE <b>5000</b>
AREA MNM ALT (x100) <b>28</b>

ACC	133.800	SCOTTISH CONTROL
TWR	128.775	DONCASTER TOWER
RAD	126.225, 129.055*	DONCASTER RADAR
ATIS	134.955	DONCASTER INFORMATION

\* When instructed by ATC.

<b>WAYPOINTS</b>	
<b>CNS01</b>	: 532741.38N 0010041.36W
<b>CNS04</b>	: 532413.74N 0010338.66W
<b>CNE03</b>	: 532207.84N 0005444.51W
<b>CNE04</b>	: 533804.19N 0004820.12W
<b>UPTON</b>	: 533513.00N 0011802.58W



**UPTON 2B RWY 20** Climb straight ahead to CNS01, right to intercept a course of 207° to CNS04, left to CNE03, left to CNE04, left to UPTON.

- NOTE 1. RWY 20 obstacle requirement: minimum climb gradient 5.6% to 400 AAL.  
 NOTE 2. Close-in obstacles exist for RWY 20 departures. See Aerodrome Obstacle Chart and EGCN AD 2.10 Aerodrome Obstacles.  
 NOTE 3. Adhere to maximum speed limits where specified by waypoint constraints.  
 NOTE 4. Maximum 250 KIAS below **FL100** unless authorised by ATC.  
 NOTE 5. Aircraft unable to achieve the published altitude/flight level restrictions must inform ATC prior to departure.

**ADDITIONAL RNAV DATA**

- DME/DME only procedure: no critical nav aids.
- RNAV1 SIDs are available only for approved aircraft that are either GNSS equipped or that have DME/DME and INS/IRU with automatic runway updating capability.

**GENERAL INFORMATION**

- RNAV1 SIDs reflect Noise Preferential Routings. See EGCN AD 2.21 Noise Abatement Procedures.