


LOC/DME I-HRL	APP CRS	Rwy Idg	9400
111.5	178°	TDZE	35
Chan 52		Apt Elev	36

ILS or LOC RWY 18R

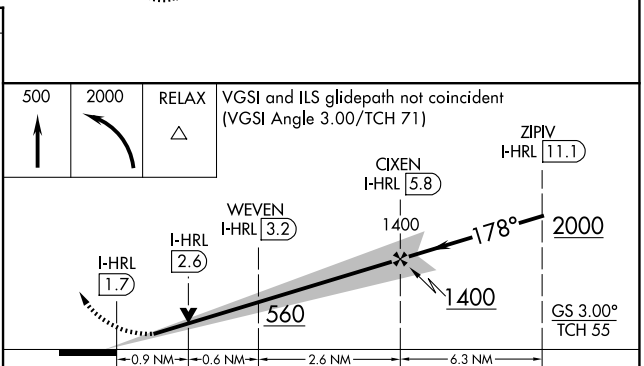
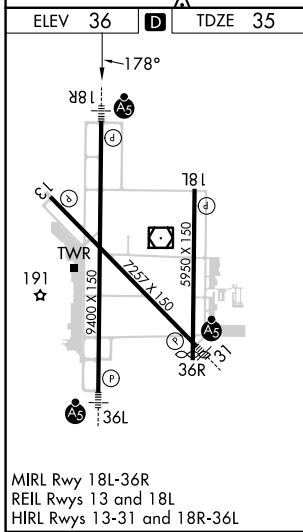
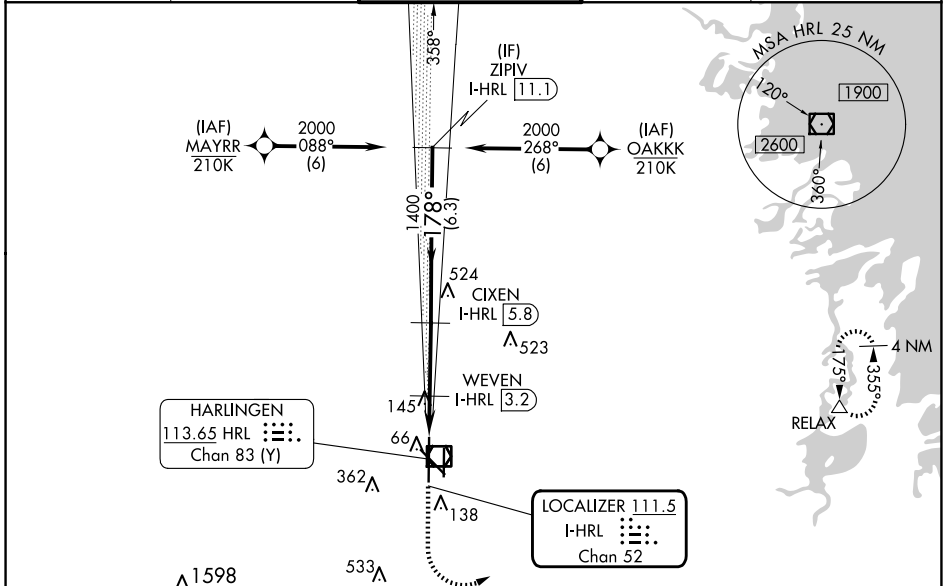
VALLEY INTL (H.R.L.)


RNP APCH - GPS.

When local altimeter setting not received, use Port Isabel altimeter setting: increase S-ILS 18R DA to 277 feet; increase all MDAs 60 feet and S-LOC 18R visibility Cat C/D to RVR 4000 and Circling Cat C/D ¼ SM. For inop ALS when using Port Isabel altimeter setting, increase S-LOC 18R visibility Cat C/D to RVR 5500. VDP NA when using Port Isabel altimeter setting.
 *RVR 1800 authorized with use of FD or AP or HUD to DA. (NA when using secondary altimeter setting).

MALSR  MISSED APPROACH: Climb to 500 then climbing left turn to 2000 direct RELAX and hold.

ATIS 124.85	VALLEY APP CON 120.7 279.5	HARLINGEN TOWER ★ 119.3 (CTAF) 0 317.6	GND CON 121.7	UNICOM 122.95
----------------	-------------------------------	---	------------------	------------------



CATEGORY	A	B	C	D
S-ILS 18R*	235/24 200 (200-½)			
S-LOC 18R	400/24	365 (400-½)	400/35	365 (400-¾)
 CIRCLING	460-1 424 (500-1)	560-1 524 (600-1)	600-1½ 564 (700-1½)	680-2 644 (700-2)

SC-3, 20 MAR 2025 to 17 APR 2025

SC-3, 20 MAR 2025 to 17 APR 2025