

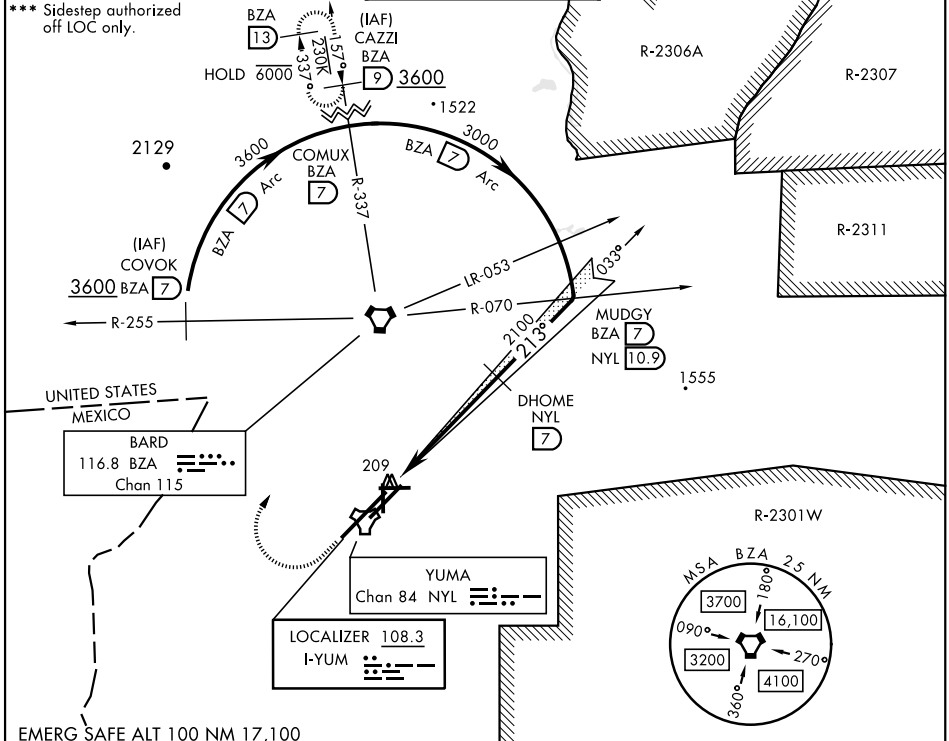
YUMA, ARIZONA

ILS or LOC/DME RWY 21R

LOC I-YUM 108.3	APCH CRS 213°	Rwy Ldg 21L 9239 21R 13,300 TDZE 21L 208 21R 193 Arpt Elev 213	AL-511 [USN] YUMA MCAS/YUMA INTL (KNYL)
---------------------------	-------------------------	---	---

VOR required.
 * When ALS inop, increase vis to 3/4 mile.
 ** When ALS inop, increase CAT AB vis to 1 mile, CAT CD vis to 1 1/8 miles.

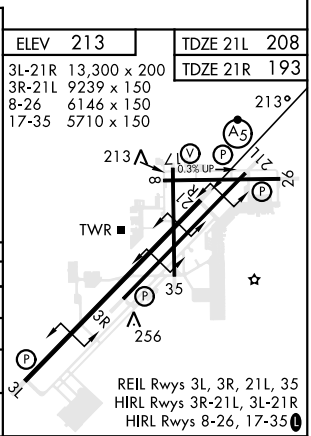
ATIS ★ 118.8 273.5	APP CON 124.7 371.975	TOWER ★ 119.3 (CTAF) 0 377.075	GND CON 121.9 314.0	CLNC CAZL 118.0 336.4	ASR/ PAR
------------------------------	---------------------------------	--	-------------------------------	---------------------------------	-------------



EMERG SAFE ALT 100 NM 17,100

900	3600	BZA
↑	↷	⬠
VASI and ILS not coincident.		
HODKO NYL 1.7	HODKO NYL 2.3	DHOME NYL 7
213°	2100	3000
MUDGY R-070 BZA 7 NYL 10.9	COMUX R-337 BZA 7	COVOK R-255 BZA 7
3600	3600	3600
Arc	GS 3.00°	TCH 54
0.5	5.3 NM	

CATEGORY	A	B	C	D
S-ILS 21R *	393-1/2		200	(200-1/2)
S-LOC 21R **	600-1/2	407 (400-1/2)	600-3/4	407 (400-3/4)
SIDESTEP 21L ***	600-1	392 (400-1)	600-1 1/8	392 (400-1 1/8)
CIRCLING	680-1 467 (500-1)	700-1 487 (500-1)	800-1 1/2 587 (600-1 1/2)	800-2 587 (600-2)



YUMA, ARIZONA 32° 39' N - 114° 36' W YUMA MCAS/YUMA INTL (KNYL)

Amdt 6 22APR21

ILS or LOC/DME RWY 21R

SW-4, 20 MAR 2025 to 17 APR 2025

SW-4, 20 MAR 2025 to 17 APR 2025