

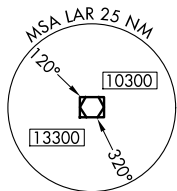
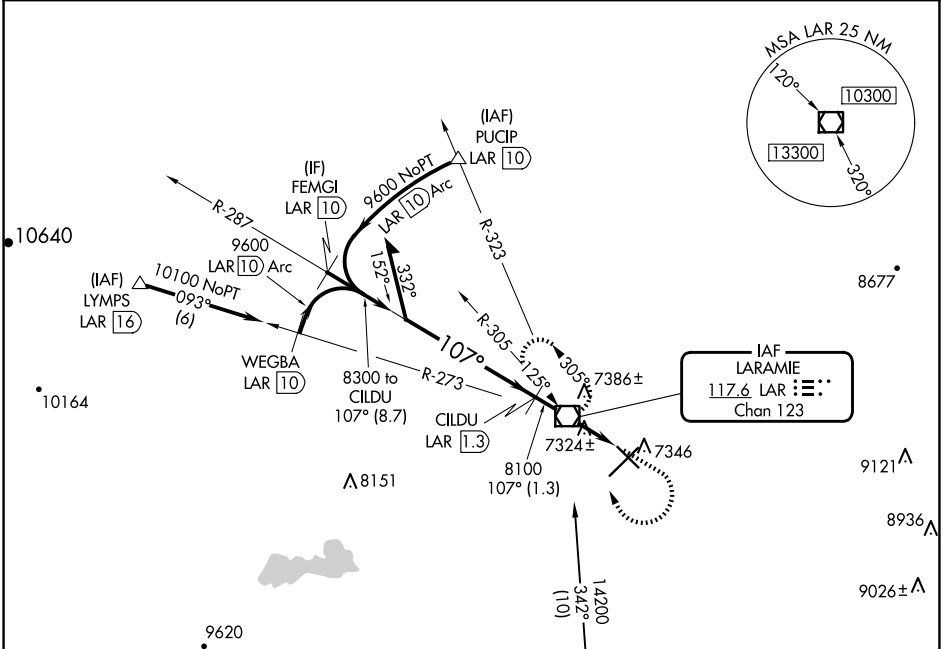
VOR/DME LAR 117.6 Chan 123	APP CRS 107°	Rwy Idg TDZE Apt Elev 6301 7275 7284
---	------------------------	--

VOR/DME RWY 12

LARAMIE RGNL (L.A.R.)

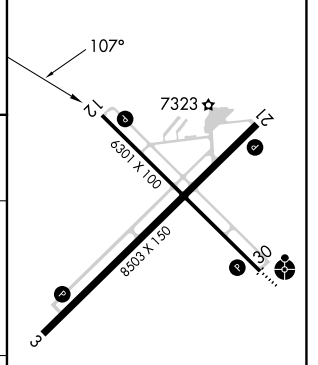
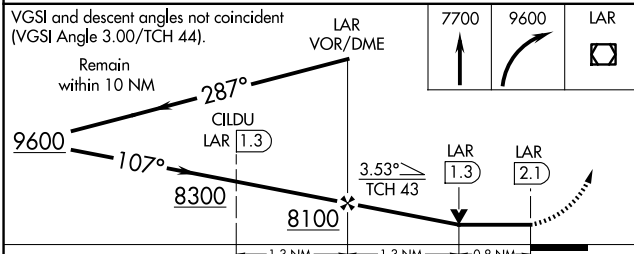
MISSED APPROACH: Climb to 7700 then climbing right turn to 9600 direct LAR VOR/DME and hold, continue climb-in-hold to 9600.

ASOS 135.475	DENVER CENTER 125.9 284.7	UNICOM 123.05 (CTAF)
------------------------	-------------------------------------	--------------------------------



IAF
LARAMIE
117.6 LAR **123.05**
Chan 123

ELEV 7284	TDZE 7275
-----------	-----------



CATEGORY	A	B	C	D
S-12	7580-1 305 (300-1)			
CIRCLING	7660-1 376 (400-1)	7760-1 476 (500-1)	7880-1½ 596 (600-1½)	7920-2 636 (700-2)

REIL Rwy 3, 12 and 21
MIRL Rwy 3-21 and 12-30

NW-1, 20 MAR 2025 to 17 APR 2025

NW-1, 20 MAR 2025 to 17 APR 2025