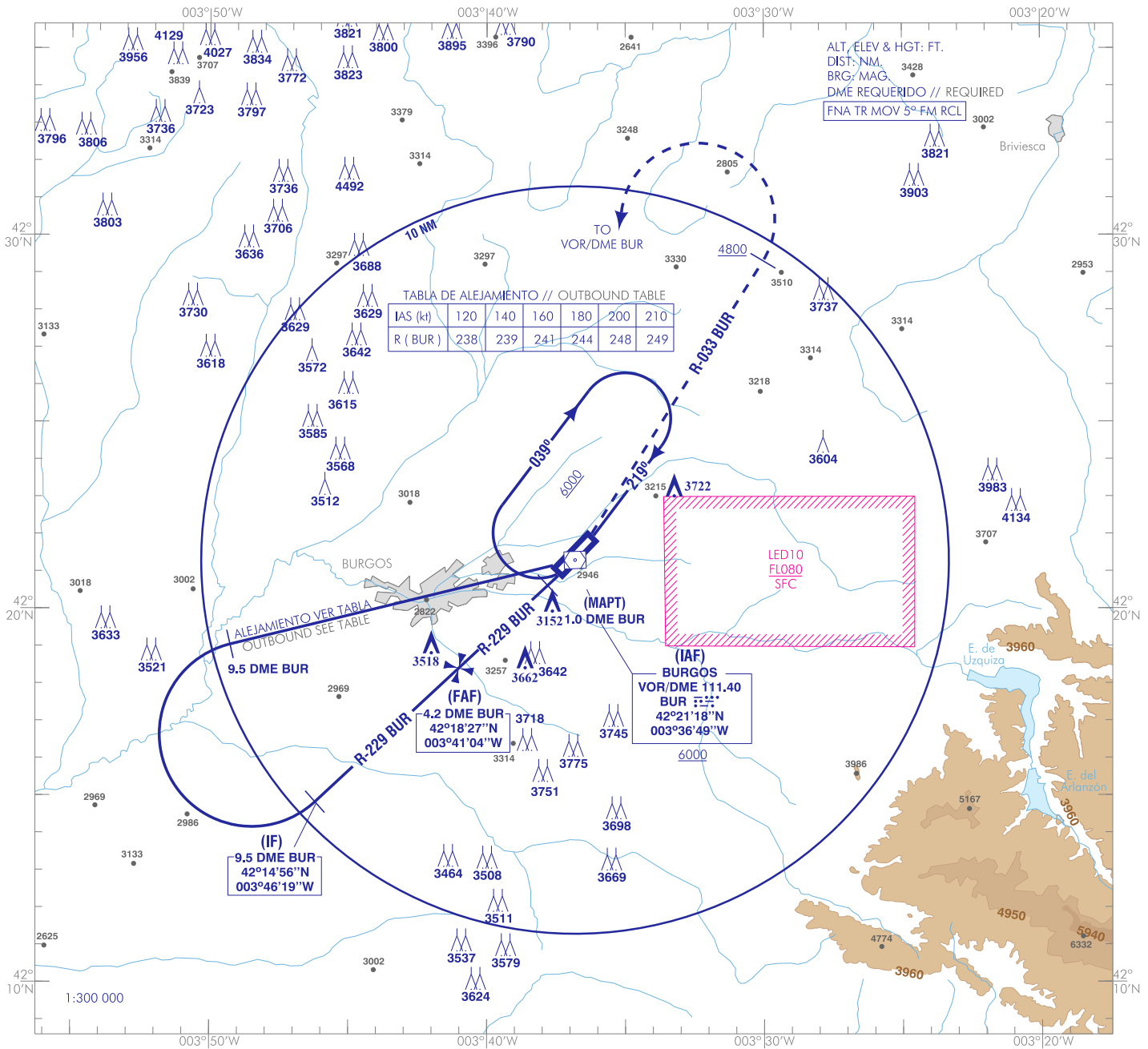


CARTA DE APROXIMACIÓN
POR INSTRUMENTOS-OACI

ELEV AD
2962
VAR 0° (2020)

AFIS 125.430 C

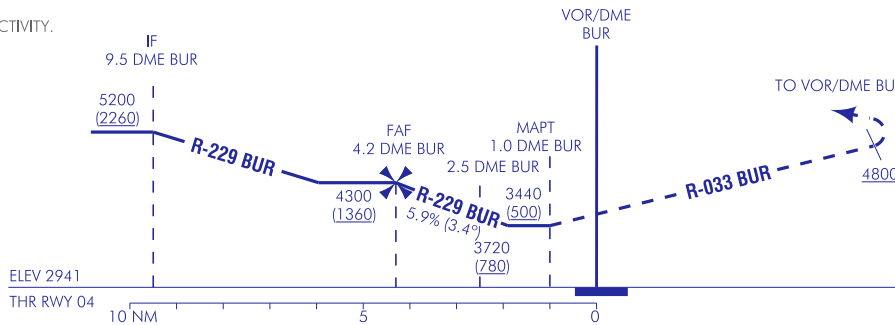
BURGOS/Villafria
VOR
RWY 04



FRUSTRADA: CONTINUAR POR R-229 BUR HASTA VOR/DME BUR. PROCEDER POR R-033 BUR HASTA ALCANZAR 4800. VIRAR A LA IZQUIERDA DIRECTO A VOR/DME BUR ASCIENDIENDO A 6000 PARA INCORPORARSE A LA ESPERA.

MISSED APCH: CONTINUE ON R-229 BUR UP TO VOR/DME BUR. PROCEED ON R-033 BUR UP TO REACH 4800. TURN LEFT DIRECT TO VOR/DME BUR CLIMBING TO 6000 TO JOIN THE HOLDING.

- NOTE:
- SUJETA A LA ACTIVIDAD DE LA LED10.
NOTE:
- SUBJECT TO LED10 ACTIVITY.

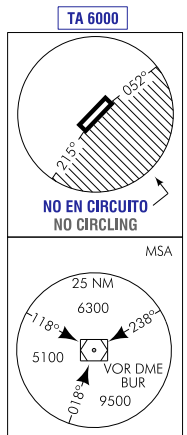


HGT REF ELEV THR RWY 04

| OCA/H | A | B | C | D |
|--|---------------|----------------|----------------|---|
| 2.5% | | 3440 (500) | | |
| STA | | | | |
| En círculo (H) sobre Circling (H) over | 3700 (740) | 4020 (1060) | 4120 (1160) | |

| GS | kt | 80 | 100 | 120 | 140 | 160 | 180 |
|------------|--------|--|-----|-----|-----|-----|------|
| FAF-THR: | min:s | | | | | | |
| FAF-MAPT: | min:s | NO AUTORIZADO EL CRONOMETRAJE // TIMING NOT AUTHORIZED | | | | | |
| ROD: 5.9 % | ft/min | 480 | 600 | 720 | 840 | 959 | 1079 |

| ALT/HGT DME (BUR) FNA | | | | | | | | | | | | |
|-----------------------|----|----|----|---|---|---|---|---|----------------|---------------|---------------|---|
| 13 | 12 | 11 | 10 | 9 | 8 | 7 | 6 | 5 | 4 | 3 | 2 | 1 |
| | | | | | | | | | 4270 (1320) | 3910 (960) | 3550 (600) | |



CAMBIOS: FREC ATIS.
CHANGES: ATIS FREQ.

BURGOS/Villafria AD

REQUISITOS DE LA BASE DE DATOS AERONÁUTICA
 AERONAUTICAL DATABASE REQUIREMENTS

PROCEDIMIENTOS DE APROXIMACIÓN POR INSTRUMENTOS // INSTRUMENT APPROACH PROCEDURES

VOR RWY 04

| PUNTO POINT | LAT | LONG | AZIMUT VERDADERO TRUE BEARING | DISTANCIA DME DME DISTANCE (NM) |
|---|--------------|---------------|----------------------------------|---------------------------------------|
| VOR/DME BUR (IAF) | 42°21'17.9"N | 003°36'48.9"W | - | - |
| IF | 42°14'56.1"N | 003°46'19.0"W | 228.00° (BUR) | 9.50 DME BUR |
| FAF | 42°18'27.3"N | 003°41'04.1"W | 228.00° (BUR) | 4.25 DME BUR |
| MAPT | 42°20'37.9"N | 003°37'48.8"W | 228.00° (BUR) | 1.00 DME BUR |
| Aproximación final de precisión - Pendiente (Ángulo de descenso) // Precision final approach - Slope (Descent angle) | | | | 5.9% (3.39°) |