

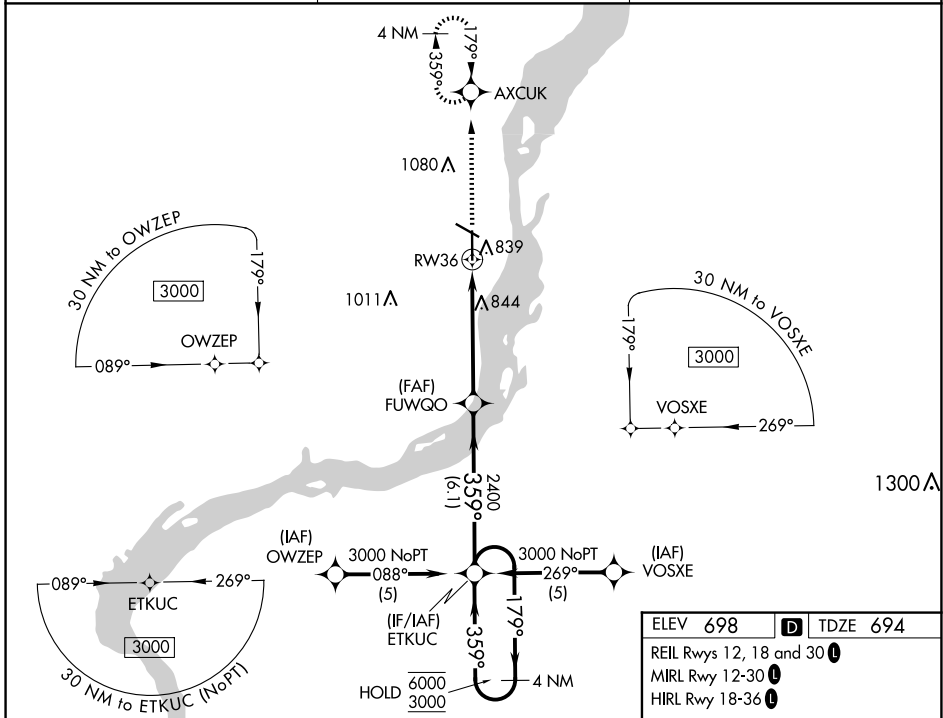
WAAS CH 42711 W36A	APP CRS 359°	Rwy Idg TDZE Apt Elev	6102 694 698
----------------------------------------	------------------------	-----------------------------	-----------------------------------------

RNAV (GPS) RWY 36

SOUTHEAST IOWA RGNL (B.R.L.)

RNP APCH.	MALSR	MISSED APPROACH: Climb to 3000 direct AXCUK and hold, continue climb-in-hold to 3000.
<p>For uncompensated Baro-VNAV systems, LNAV/VNAV NA below -16°C or above 54°C.</p>		

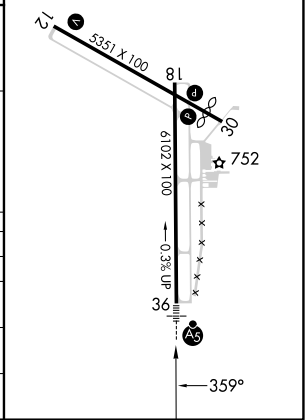
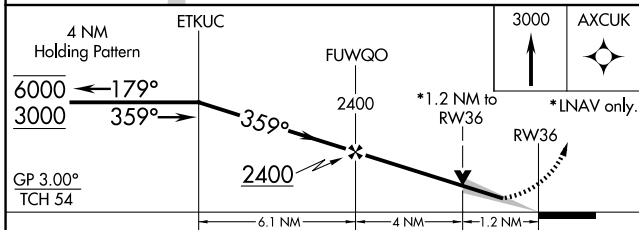
ASOS 118.025	CHICAGO CENTER 135.6 370.95	UNICOM 123.0 (CTAF)
------------------------	---------------------------------------	-------------------------------



NC-3, 20 MAR 2025 to 17 APR 2025

NC-3, 20 MAR 2025 to 17 APR 2025

ELEV 698	TDZE 694
REIL Rwy 12, 18 and 30	
MIRL Rwy 12-30	
HIRL Rwy 18-36	



CATEGORY	A	B	C	D
LPV DA	894-1/2	200 (200-1/2)		NA
LNAV/VNAV DA	1026-3/4	332 (400-3/4)		NA
LNAV MDA	1100-1/2	406 (500-1/2)	1100-3/4 406 (500-3/4)	NA
CIRCLING	1180-1	482 (500-1)	1380-2 682 (700-2)	NA