

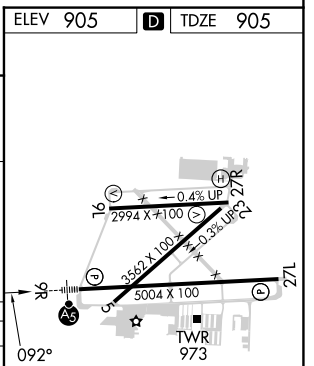
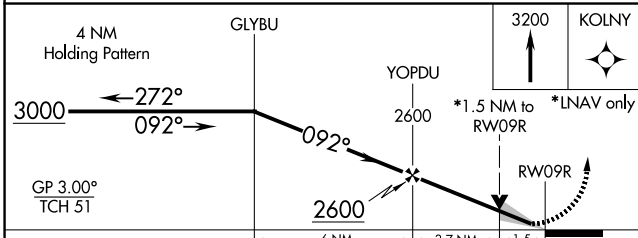
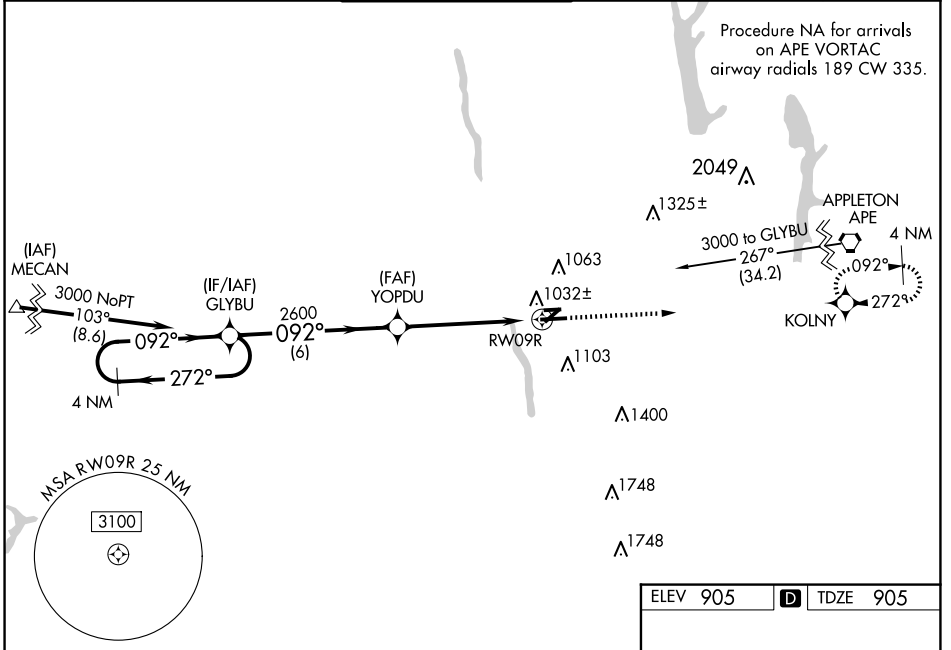
WAAS CH <b>86420</b>	APP CRS <b>092°</b>	Rwy Idg TDZE Apt Elev	<b>5004</b> <b>905</b> <b>905</b>
<b>W09A</b>			

# RNAV (GPS) RWY 9R

OHIO STATE UNIVERSITY (OSU)

RNP APCH.		MALSR 	MISSED APPROACH: Climb to 3200 direct KOLNY and hold.
<p>▼ Baro-VNAV NA when using John Glenn Columbus Intl altimeter setting. For uncompensated Baro-VNAV systems, LNAV/VNAV NA below -16°C or above 38°C. VDP NA with John Glenn Columbus Intl altimeter setting. When local altimeter setting not received, use John Glenn Columbus Intl altimeter setting; increase LPV DA to 1140 feet; increase LNAV/VNAV DA to 1227 feet; increase all MDAs 40 feet and LNAV visibility Cat C 1/8 SM, Cat D 1/4 SM and Circling Cat D 1/4 SM. Circling Rwy 23 NA at night. For inop ALS, increase LNAV/VNAV visibility all Cats to 1/2 SM.</p>			

ATIS <b>121.35</b>	COLUMBUS APP CON <b>125.95 317.775</b>	STATE TOWER* <b>118.8 (CTAF) 254.325</b>	GND CON <b>121.7</b>	CLNC DEL <b>121.7</b>	UNICOM <b>122.95</b>
-----------------------	---	---	-------------------------	--------------------------	-------------------------



CATEGORY	A	B	C	D
LPV DA		1105-1/2	200 (200-1/2)	
LNAV/VNAV DA		1192-1/2	287 (300-1/2)	
LNAV MDA	1420-1/2	515 (600-1/2)	1420-1	515 (600-1)
CIRCLING	1420-1	515 (600-1)	1420-1 1/2 515 (600-1 1/2)	1680-2 1/2 775 (800-2 1/2)

EC-2, 20 MAR 2025 to 17 APR 2025

EC-2, 20 MAR 2025 to 17 APR 2025