

D-ATIS(English) 127.85 D-ATIS(Chinese) 128.65

TWR01 118.8(118.325) 17L/35R, 17R/35L

TWR02 118.4(118.725) 16L/34R, 16R/34L

TWR03 124.35(118.325) 17L/35R

TWR04 118.575(118.725) 16R/34L

ZSPD SHANGHAI/Pudong

RNAV RWY16L/16R/34L/34R (DUMET)

STANDARD ARRIVAL CHART-INSTRUMENT

VAR5.8° W

BEARINGS ARE MAGNETIC. ALTITUDES, ELEVATIONS AND HEIGHTS IN METERS. DME DISTANCES IN NAUTICAL MILES. DISTANCES IN KM.

APP01 120.3(119.75)  
APP02 125.4(124.05)  
APP03 125.85(119.2)  
APP04 123.8(119.2)  
APP05 126.65(128.05)  
APP06 126.3(120.65)

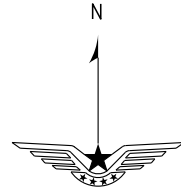
APP07 121.1(119.75)  
APP08 127.75(124.05)  
APP09 121.375(128.05)  
APP10 125.625(120.65)  
APP11 119.075(128.05)

TL 3600  
TA 3000  
3300(QNH ≥ 1031hPa)  
2700(QNH ≤ 979hPa)

Only used for CDO

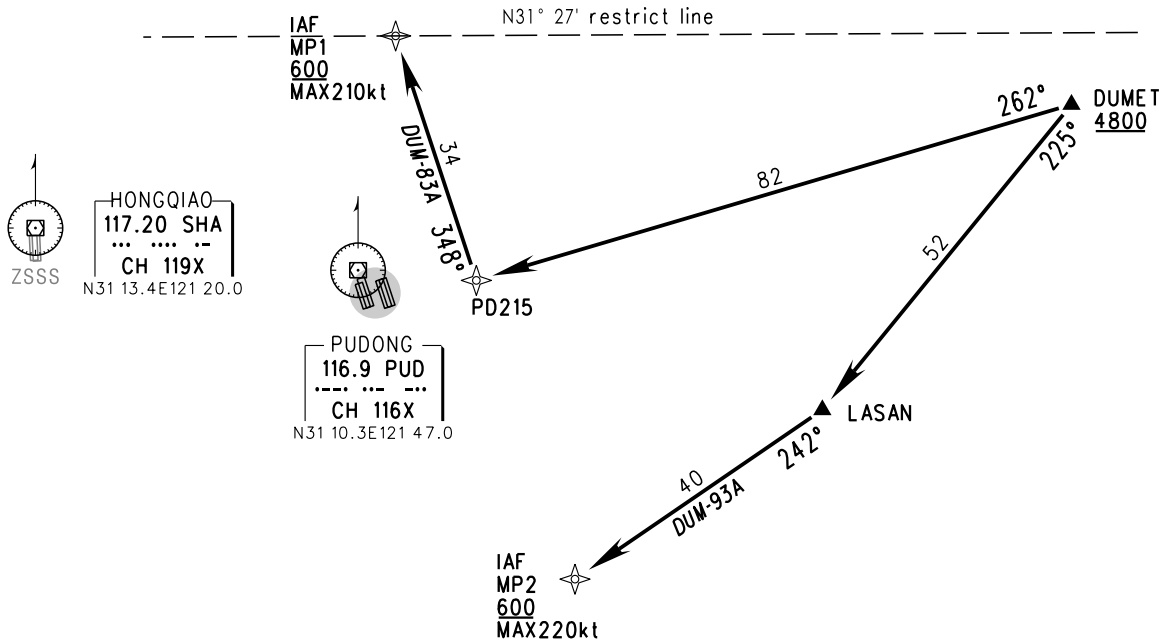
Note:

- Using this chart need ATC permission.
- Aircraft flying at north of N31° 27' restrict line is strictly forbidden.

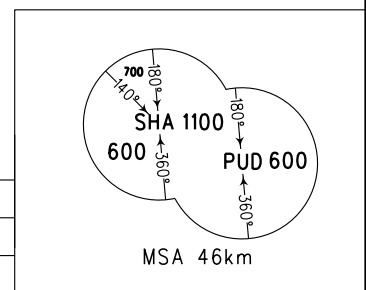


NOT TO SCALE

RNAV1  
GNSS  
or DME/DME/IRU  
RADAR REQUIRED



STAR	ROUTING
DUM-83A	DUMET-PD215-MP1
DUM-93A	DUMET-LASAN-MP2



Changes: D-ATIS.