

# RNAV (GPS) RWY 22

APCH CRS	Rwy Idg	13,554
216°	TDZE	3947
	Arprt Elev	3947

[USA]

BIGGS AAF (KBIF)

RNP APCH - GPS  
 RADAR required when R-5103A, R-5103B, R-5103C, 5107K are active.  
 \* Circling not authorized for CAT D West of Rwy 4-22.



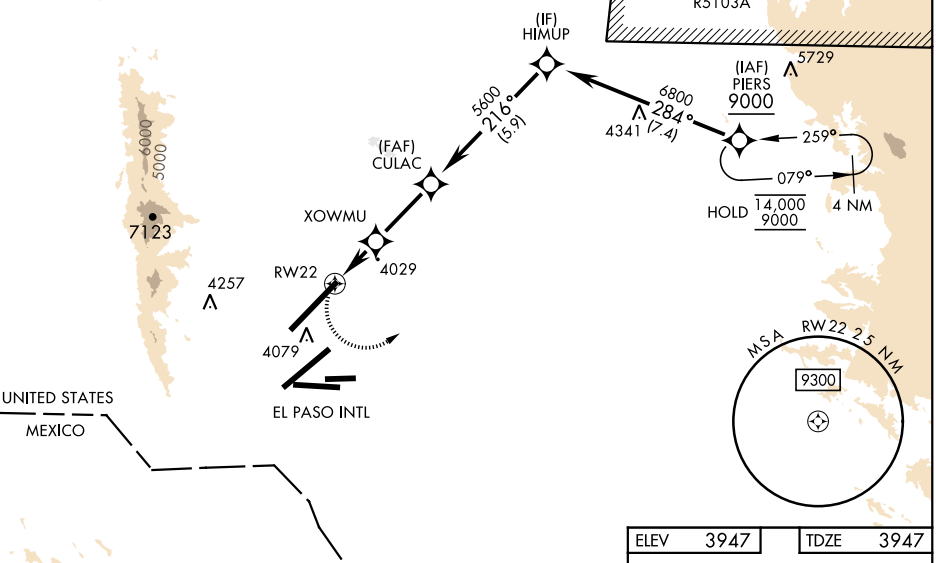
MISSED APPROACH: Climb to 4400 then climbing left turn to 9000 direct PIERS and hold, continue climb-in-hold to 9000.

ATIS	EL PASO APP CON	TOWER	GND CON	EL PASO CLNC DEL	ASR
120.0 254.3	119.15 353.5 S of V16 124.25 298.85 N of V16	127.9 342.25	121.6 251.125	125.0 379.1	

Arrivals expect RADAR vectors to final when restricted areas are active.

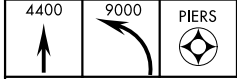
Procedure not authorized via V-560 eastbound without holding at PIERS. ATC clearance required.

CAUTION: EL PASO INTL airport is 2.5 NM southeast with same runway configuration.

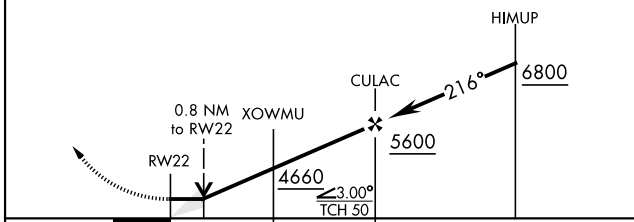


SC-3, 20 MAR 2025 to 17 APR 2025

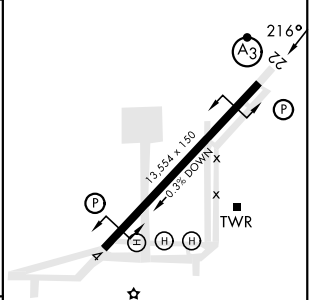
SC-3, 20 MAR 2025 to 17 APR 2025



VGSI and descent angles not coincident (VGSI Angle 3.00/TCH 75).



ELEV	3947	TDZE	3947
------	------	------	------



CATEGORY	A	B	C	D
LNVAI MDA	4280-1		333	(400-1)
CIRCLING*	4400-1	453 (500-1)	4560-1 3/4 613 (700-1 3/4)	4560-2 613 (700-2)

HIRL Rwy 4-22  
 REL Rws 4 and 22

# RNAV (GPS) RWY 22