

KNOB NOSTER, MISSOURI

ILS or LOC Y RWY 1

LOC I-SZL 110.3	APCH CRS 010°	Rwy Idg 12,400	TDZE 837
		Arpt Elev 871	

AL-496 (USAF)

WHITEMAN AFB (KSZL)

RADAR or DME required

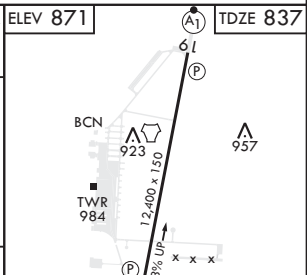
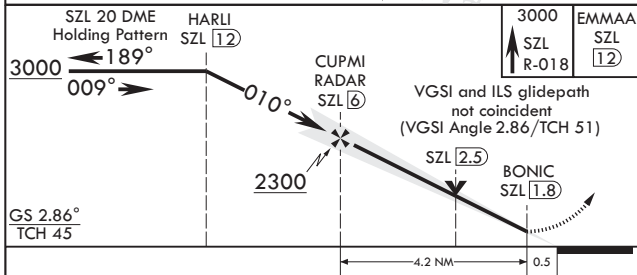
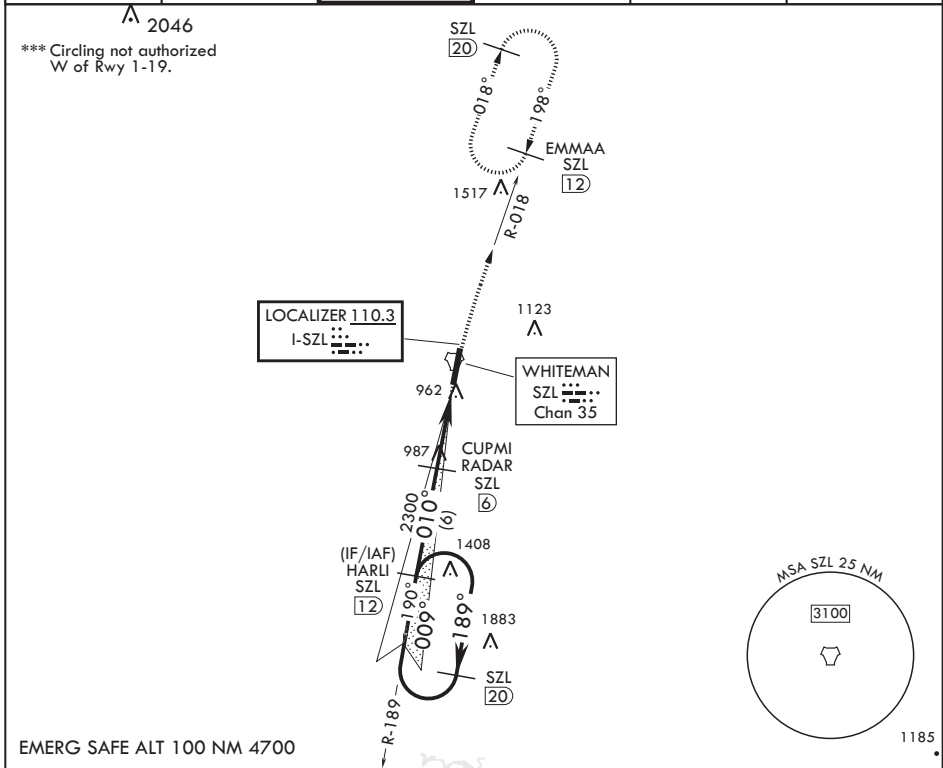
▲ * When ALS inop, increase CAT ABCDE RVR to 40, vis to 3/4 mile.
 ** When ALS inop, increase CAT AB RVR to 55, vis to 1 mile; CAT CDE vis to 1 1/4 miles.

ALSF-1



MISSED APPROACH: Climb to 3000 via SZL TACAN R-018 to EMMAA and hold.

ATIS★ 118.725 239.025	APP CON★ 127.45 284.0	TOWER★ 132.4 318.8	GND CON★ 119.125 275.8	CLNC DEL★ 121.75 335.8	ASR
---------------------------------	---------------------------------	------------------------------	----------------------------------	----------------------------------	-----



CATEGORY	A	B	C	D	E
S-ILS 1*	1037/24		200	(200-½)	
S-LOC 1**	1260/24	423 (400-½)	1260/40	423	(400-¾)
C CIRCLING***	1300-1 429 (500-1)	1340-1 469 (500-1)	1340-1½ 469 (500-1½)	1460-2 589 (600-2)	

FAF to MAP 4.2 NM					
Knots	60	90	120	150	180
Min:Sec	4:12	2:48	2:06	1:41	1:24

KNOB NOSTER, MISSOURI

38°44'N - 93°33'W

WHITEMAN AFB (KSZL)

Amdt 1 10OCT19

ILS or LOC Y RWY 1

NC-3, 20 MAR 2025 to 17 APR 2025

NC-3, 20 MAR 2025 to 17 APR 2025