

# HI-TACAN Z RWY 33

TACAN BAD Chan <b>105</b>	APCH CRS <b>323°</b>	Rwy ldg <b>11,758</b> THRE <b>161</b> Arpt Elev <b>165</b>
------------------------------	-------------------------	--

[USAF]

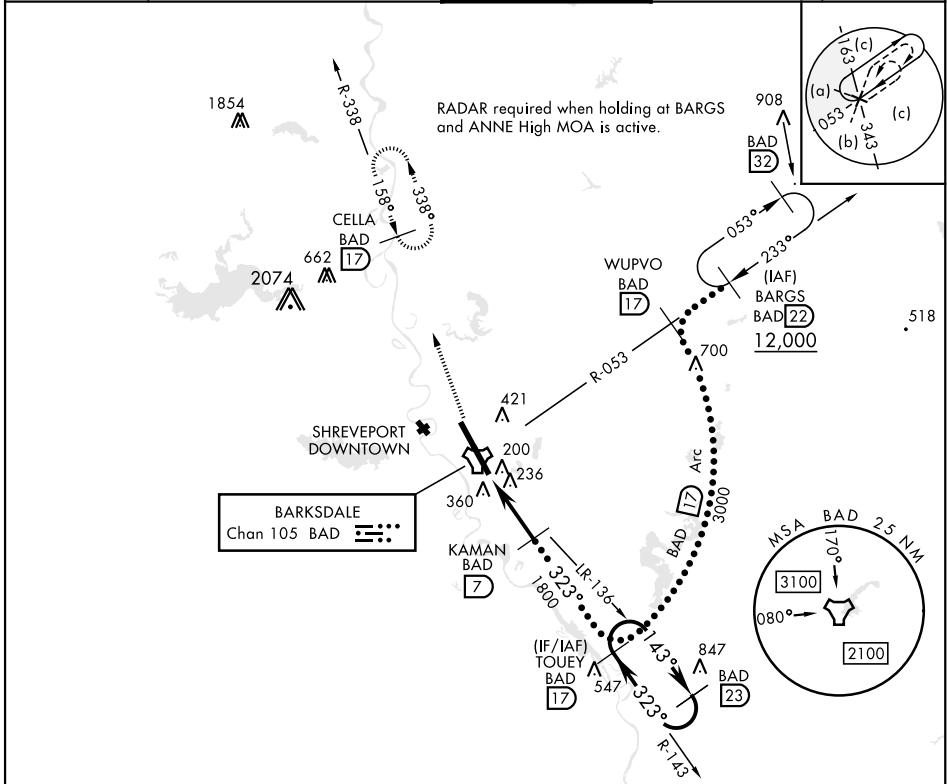
BARKSDALE AFB (KBAD)

\* When ALS inop, increase CAT CDE vis to 1 $\frac{3}{8}$  miles.  
\*\* Circling not authorized W of Rwy.



MISSED APPROACH: Climb to 4000 via BAD R-338 direct CELLA and hold.

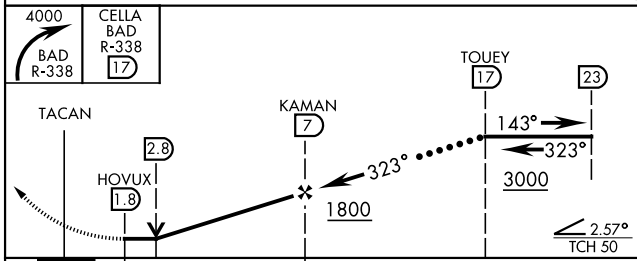
ATIS <b>307.025</b>	SHREVEPORT APP CON 320°-152° <b>123.75 360.725</b> 153°-319° <b>119.9 335.55</b>	TOWER* <b>128.25 278.3</b>	GND CON <b>121.8 253.5</b>	ASR
------------------------	--	-------------------------------	-------------------------------	-----



SC-4, 20 MAR 2025 to 17 APR 2025

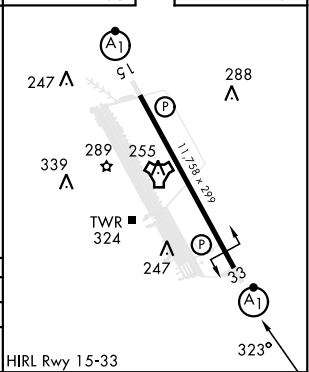
SC-4, 20 MAR 2025 to 17 APR 2025

EMERG SAFE ALT 100 NM 3300



CATEGORY	C	D	E
S-33*	640/50	479	(500-1)
CIRCLING**	NOT AUTHORIZED	760-2 595 (600-2)	780-2 $\frac{1}{4}$ 615 (700-2 $\frac{1}{4}$ )

ELEV	165	THRE	161
------	-----	------	-----



# HI-TACAN Z RWY 33