

# READE SEVEN DEPARTURE

NE-3, 20 MAR 2025 to 17 APR 2025

ATIS 119.15 263.025  
 CLNC DEL 127.55 348.6  
 GND CON 121.9 348.6  
 RICHMOND TOWER 121.1 257.8  
 POTOMAC DEP CON 126.75 307.2

TOP ALTITUDE:  
5000

GORDONSVILLE  
 115.6 GVE  
 Chan 103

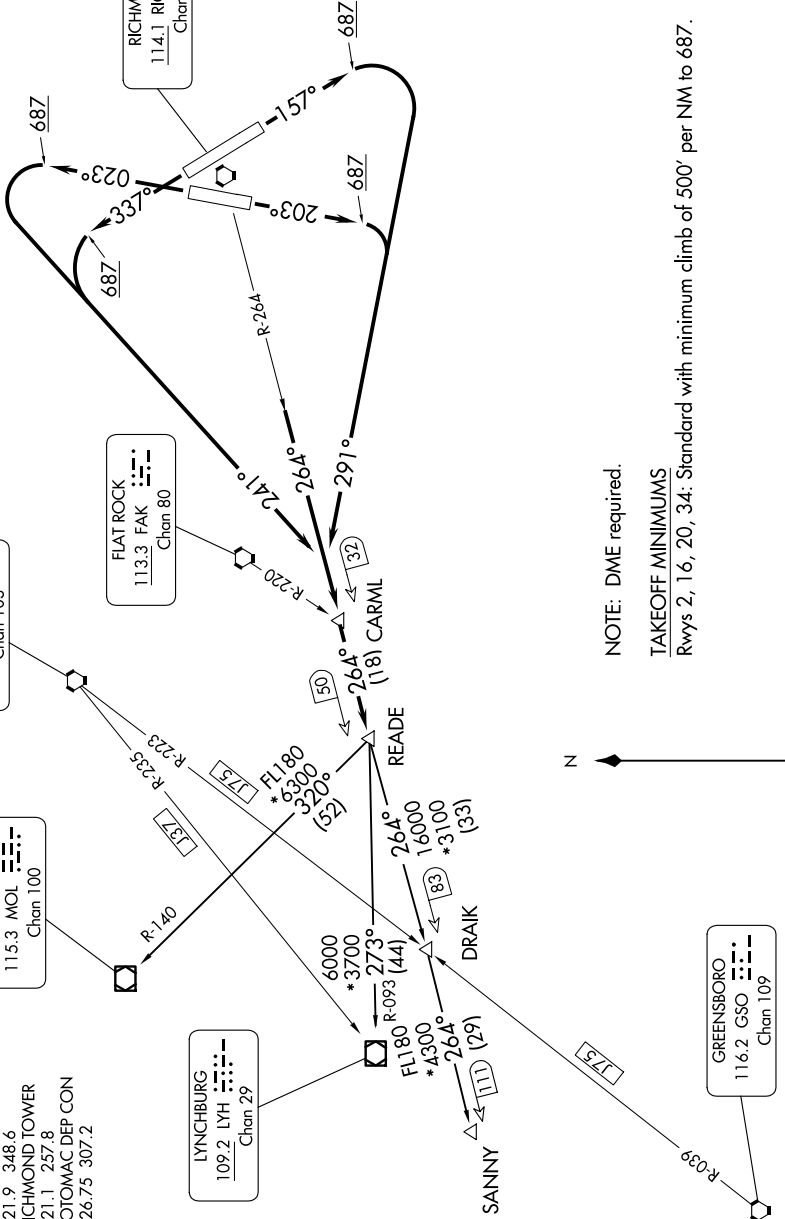
MONTEBELLO  
 115.3 MOL  
 Chan 100

LYNCHBURG  
 109.2 LYH  
 Chan 29

FLAT ROCK  
 113.3 FAK  
 Chan 80

RICHMOND  
 114.1 RIC  
 Chan 88

GREENSBORO  
 116.2 GSO  
 Chan 109



NOTE: DME required.

TAKEOFF MINIMUMS

Rwys 2, 16, 20, 34: Standard with minimum climb of 500' per NM to 687.

(NARRATIVE ON FOLLOWING PAGE)

NOTE: Chart not to scale.

NE-3, 20 MAR 2025 to 17 APR 2025

# READE SEVEN DEPARTURE