

LAS VEGAS, NEVADA

LOC Y RWY 21L

LOC I-DIQ 109.1	APCH CRS 209°	Rwy Idg 21L 10,051 TDZE 1865 Arprt Elev 1869	Rwy Idg 21R 10,120 TDZE 1869	AL-227 [USAF]	NELLIS AFB (KLSV)
---------------------------	-------------------------	---	--	---------------	-------------------

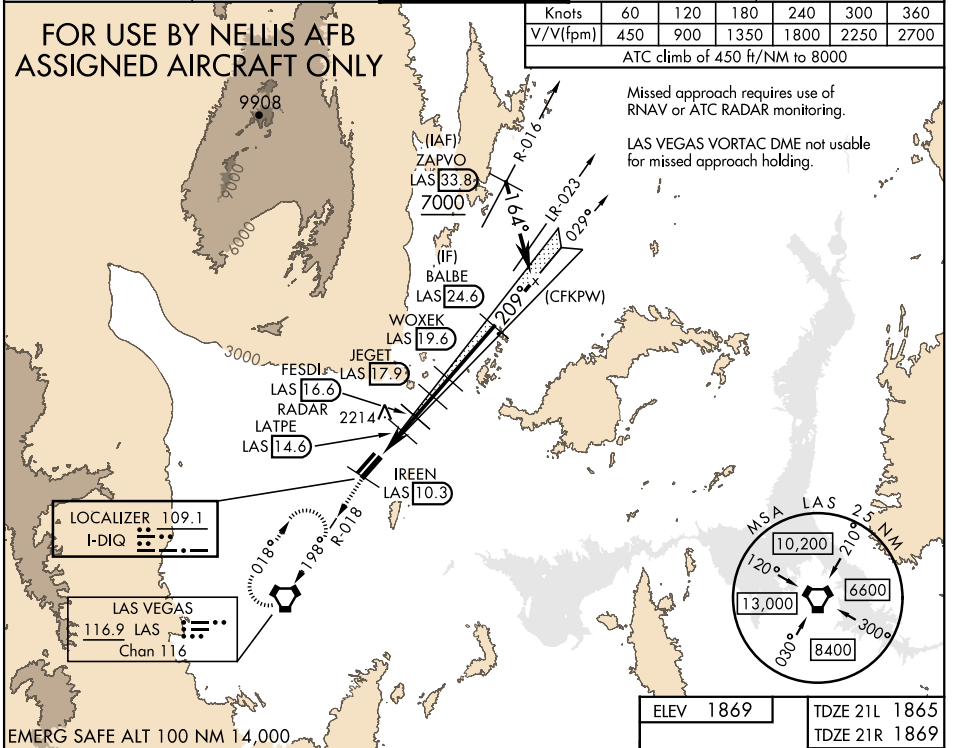
RADAR or DME required.		ALSF-1 	MISSED APPROACH: Climb to 8000, intercept the LAS VORTAC R-018 to 10.3 DME (IREEN), then to LAS and hold, continue climb in hold to 8000.
<p>* When ALS inop, increase vis to 1 1/8 miles. ** Circling not authorized SE of Rwy 3R-21L.</p>			

ATIS 270.1	APP CON 124.95 273.55	TOWER 132.55 327.0	GND CON 121.8 275.8	CLNC DEL 120.9 289.4
----------------------	---------------------------------	------------------------------	-------------------------------	--------------------------------

FOR USE BY NELLIS AFB ASSIGNED AIRCRAFT ONLY

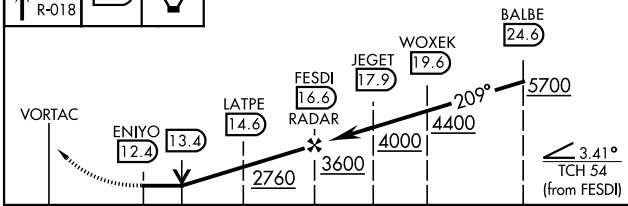
Knots	60	120	180	240	300	360
V/V(fpm)	450	900	1350	1800	2250	2700

ATC climb of 450 ft/NM to 8000

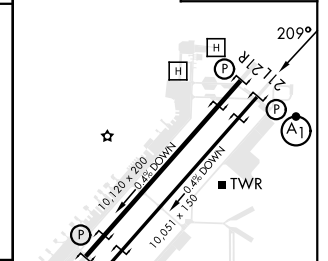


Missed approach requires use of RNAV or ATC RADAR monitoring.
LAS VEGAS VORTAC DME not usable for missed approach holding.

EMERG SAFE ALT 100 NM 14,000.
8000
LAS R-018
IREEN 10.3
LAS VORTAC
VGSI and descent angles not coincident (VGSI Angle 3.00/TCH 54).



ELEV 1869	TDZE 21L 1865
	TDZE 21R 1869



CATEGORY	C	D	E
S-21L *	2360/50	495 (500-1)	
SIDESTEP 21R	2360-1 3/8	491 (500-1 3/8)	
CIRCLING **	2560-2 691 (700-2)	2840-3 971 (1000-3)	3140-3 1271 (1300-3)

FAF to MAP 4.2 NM					
Knots	60	90	120	150	180
Min:Sec	4:12	2:48	2:06	1:41	1:24

HIRL all rwys

LAS VEGAS, NEVADA 36°14'N-115°02'W NELLIS AFB (KLSV)

Amdt 9 10AUG23

LOC Y RWY 21L

SW-4, 20 MAR 2025 to 17 APR 2025

SW-4, 20 MAR 2025 to 17 APR 2025