

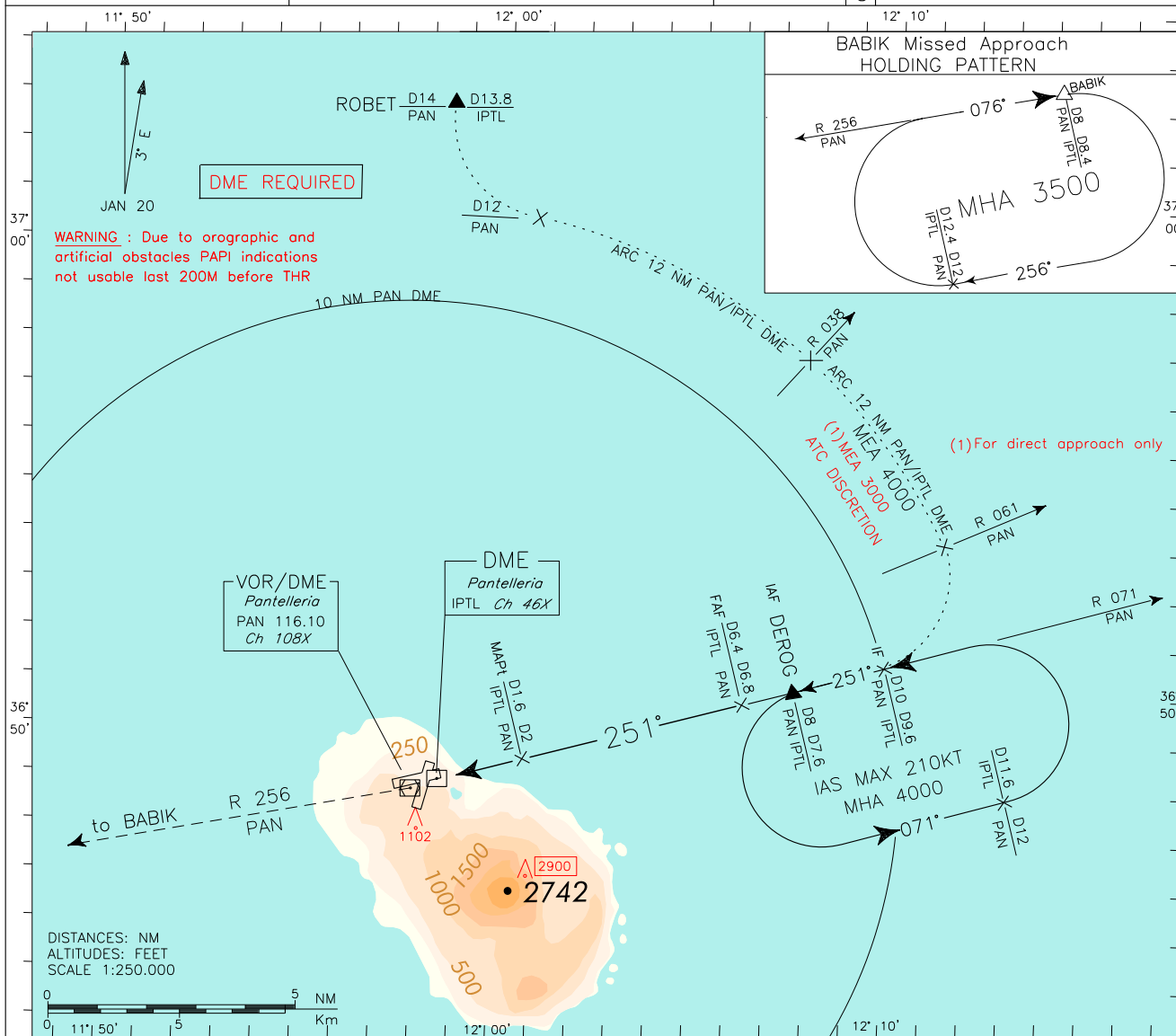
ICAO - INSTRUMENT APPROACH CHART

AMDT. 4
DOC.8168-ED.5 2006
CHANGE: MAGNETIC DECLINATION UPDATED; RWY DESIGNATION

REMARK:
Final approach track off set 2.7' from RWY center line.
RWY center line intercepted 2341m before THR25.

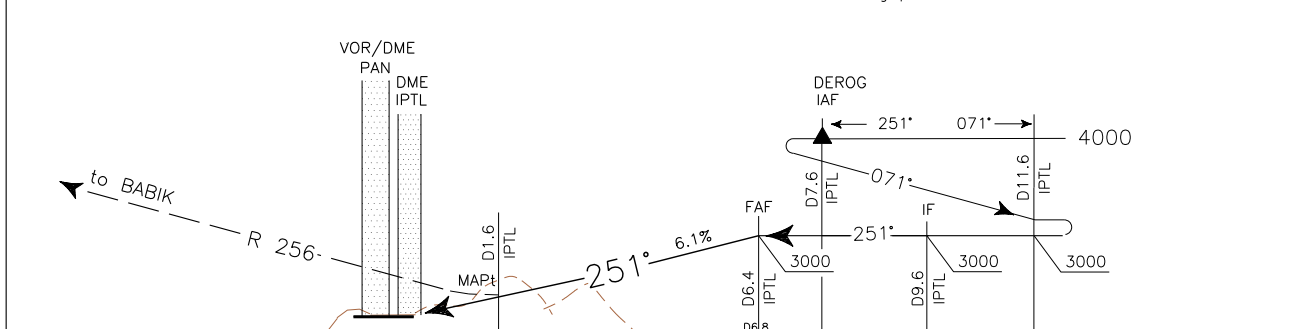
APP Pantelleria APP 119.350
TWR Pantelleria TWR 118.450
122.100

AD ELEV 629
LICG PANTELLERIA
VOR - Z RWY 25



TRANSITION ALT 5000

MISSED APPROACH: Not later than 2 NM before PAN DME climb to 3500 ft direct to PAN VOR. Then proceed on RDL 256 PAN VOR bound to BABIK holding pattern to be reached at 3500 ft.



PAN DME		THR ELEV 595															PAN DME	
		7 6 5 4 3 2 1 0 1 2 3 4 5 6 7 8 9 10 11 12 13																
		NM																

STRAIGHT-IN LANDING RWY 25		CIRCLE TO LAND		CIRCLING SECTORS	GS	FT PER MIN	FAF-MAPt	MAPt-THR	DME PAN	ALT (HGT)	MSA 25NM PAN VOR
OCA(H)	1600(1005)	MAX KT	OCA(H)								
A	2250M	2250M	100	1600 (971)	3000M	3	08	6	2690 (2095)	3900	
B	2700M	3000M	135	2100 (1471)	3600M	2	05	5	2320 (1725)		
C	2700M	3000M	180	1700 (1071)	3600M	2	04	4	1940 (1345)		
D	3000M	3000M	205	1700 (1071)	5400M	1	03	3	1570 (975)		