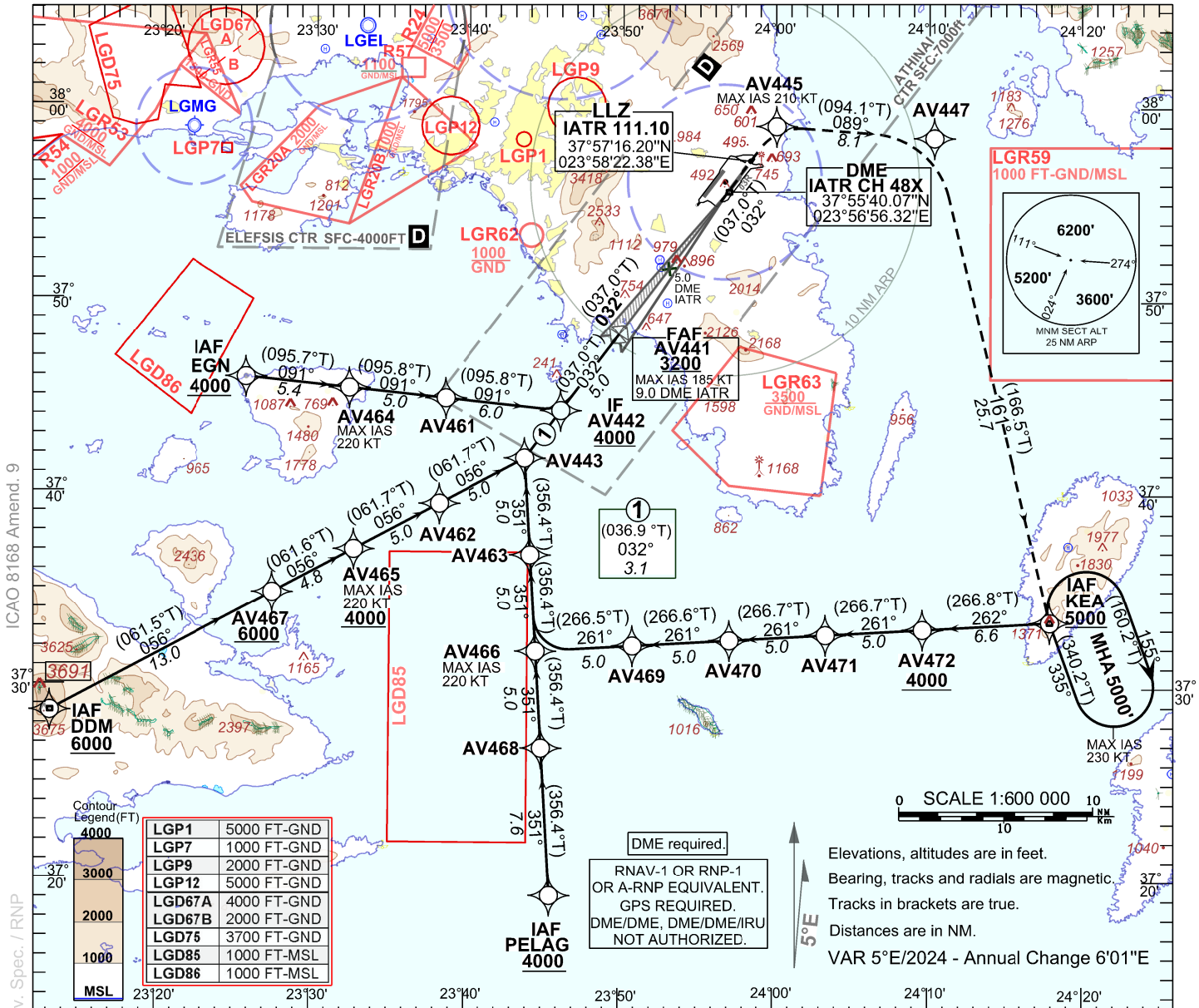
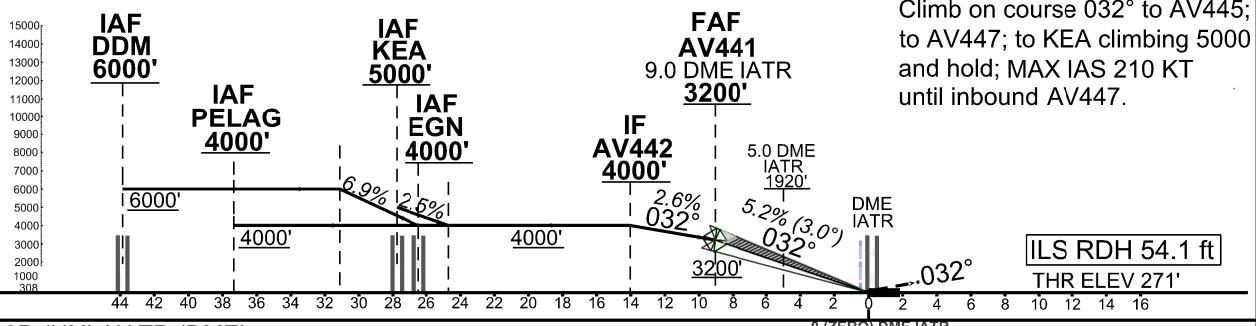


ATIS 136.125	ARRIVAL WEST 132.975	TOWER WEST 136.275
	ARRIVAL EAST 126.575	TOWER EAST 118.625



MISSED APPROACH:
Climb on course 032° to AV445;
to AV447; to KEA climbing 5000
and hold; MAX IAS 210 KT
until inbound AV447.



OCA (OCH)	A	B	C	D	D _L
ILS CAT I (ALT/HEIGHT W.R.T. THR RWY 03R ELEVATION)	548 (277)	560 (289)	777 (506)	792 (521)	
ILS CAT II (ALT/HEIGHT W.R.T. THR RWY 03R ELEVATION)	460 (189)	477 (206)	684 (413)	705 (434)	
CIRCLING (ALT/HEIGHT W.R.T. A/D ELEVATION)	1010 (702)	1160 (852)	N / A		

Distance IATR DME	8.0	7.0	6.0	5.0	4.0	3.0	2.0
Altitude 5.2% Approach	2890	2570	2250	1930	1610	1300	980
GS (kt)				100	135	160	185
AV441 - THR (9.0 NM) (MIN:SEC)				5:26	4:01	3:23	2:56
Rate of descent (5.2%) (ft/min)				530	720	850	980

ICAO 8168 Amend. 9

Change: APCH FROM DDM, APCH FROM PELAG tabular description Nav. Spec. / RNP

ILS X CAT I & II RWY 03R

INITIAL APCH FROM DDM												
Sequence Number	Waypoint Identifier	Coordinates	Path Terminator	Fly Over	Distance (NM)	Course °M (°T)	Turn Direction	Altitude (FT/FL)	Speed Limit (kt)	Navigation Specification	RNP	REMARKS
010	DDM	N 37°28'39.6100" E 023°13'01.8100"	IF	-	-	-	-	+6000	-	RNP APCH	1.0	IAF
020	AV467	N 37°34'51.7078" E 023°27'23.9154"	TF	-	13.0	056 (061.5)	-	+6000	-	RNP APCH	1.0	
030	AV465	N 37°37'07.3379" E 023°32'39.7651"	TF	-	4.8	056 (061.6)	-	+4000	-220	RNP APCH	1.0	
040	AV462	N 37°39'29.7362" E 023°38'12.3131"	TF	-	5.0	056 (061.7)	-	-	-	RNP APCH	1.0	
050	AV443	N 37°41'51.8728" E 023°43'45.2138"	TF	-	5.0	056 (061.7)	-	-	-	RNP APCH	1.0	
060	AV442	N 37°44'19.2993" E 023°46'04.4922"	TF	-	3.1	032 (036.9)	-	+4000	-	RNP APCH	1.0	IF
INITIAL APCH FROM EGN												
Sequence Number	Waypoint Identifier	Coordinates	Path Terminator	Fly Over	Distance (NM)	Course °M (°T)	Turn Direction	Altitude (FT/FL)	Speed Limit (kt)	Navigation Specification	RNP	REMARKS
010	EGN	N 37°45'58.3000" E 023°25'34.8700"	IF	-	-	-	-	+4000	-	RNP APCH	1.0	IAF
020	AV464	N 37°45'26.2208" E 023°32'18.2831"	TF	-	5.4	091 (095.7)	-	-	-220	RNP APCH	1.0	
030	AV461	N 37°44'55.9409" E 023°38'34.6317"	TF	-	5.0	091 (095.8)	-	-	-	RNP APCH	1.0	
040	AV442	N 37°44'19.2993" E 023°46'04.4922"	TF	-	6.0	091 (095.8)	-	+4000	-	RNP APCH	1.0	IF
INITIAL APCH FROM KEA												
Sequence Number	Waypoint Identifier	Coordinates	Path Terminator	Fly Over	Distance (NM)	Course °M (°T)	Turn Direction	Altitude (FT/FL)	Speed Limit (kt)	Navigation Specification	RNP	REMARKS
010	KEA	N 37°33'25.7900" E 024°17'55.3200"	IF	-	-	-	-	+5000	-	RNP APCH	1.0	IAF
020	AV472	N 37°33'03.4845" E 024°09'38.2506"	TF	-	6.6	262 (266.8)	-	+4000	-	RNP APCH	1.0	
030	AV471	N 37°32'46.1948" E 024°03'21.6360"	TF	-	5.0	261 (266.7)	-	-	-	RNP APCH	1.0	
040	AV470	N 37°32'28.5714" E 023°57'05.0703"	TF	-	5.0	261 (266.7)	-	-	-	RNP APCH	1.0	
050	AV469	N 37°32'10.6145" E 023°50'48.5543"	TF	-	5.0	261 (266.6)	-	-	-	RNP APCH	1.0	
060	AV466	N 37°31'52.3241" E 023°44'32.0889"	TF	-	5.0	261 (266.5)	-	-	-220	RNP APCH	1.0	
070	AV463	N 37°36'52.1012" E 023°44'08.6775"	TF	-	5.0	351 (356.4)	-	-	-	RNP APCH	1.0	
080	AV443	N 37°41'51.8728" E 023°43'45.2138"	TF	-	5.0	351 (356.4)	-	-	-	RNP APCH	1.0	
090	AV442	N 37°44'19.2993" E 023°46'04.4922"	TF	-	3.1	032 (036.9)	-	+4000	-	RNP APCH	1.0	IF

INITIAL APCH FROM PELAG												
Sequence Number	Waypoint Identifier	Coordinates	Path Terminator	Fly Over	Distance (NM)	Course °M (°T)	Turn Direction	Altitude (FT/FL)	Speed Limit (kt)	Navigation Specification	RNP	REMARKS
010	PELAG	N 37°19'15.0000" E 023°45'31.0000"	IF	-	-	-	-	+4000	-	RNP APCH	1.0	IAF
020	AV468	N 37°26'52.5415" E 023°44'55.4483"	TF	-	7.6	351 (356.5)	-	-	-	RNP APCH	1.0	
030	AV466	N 37°31'52.3241" E 023°44'32.0889"	TF	-	5.0	351 (356.4)	-	-	-220	RNP APCH	1.0	
040	AV463	N 37°36'52.1012" E 023°44'08.6775"	TF	-	5.0	351 (356.4)	-	-	-	RNP APCH	1.0	
050	AV443	N 37°41'51.8728" E 023°43'45.2138"	TF	-	5.0	351 (356.4)	-	-	-	RNP APCH	1.0	
060	AV442	N 37°44'19.2993" E 023°46'04.4922"	TF	-	3.1	032 (036.9)	-	+4000	-	RNP APCH	1.0	IF
FINAL APCH												
Sequence Number	Waypoint Identifier	Coordinates	Path Terminator	Fly Over	Distance (NM)	Course °M (°T)	Turn Direction	Altitude (FT/FL)	Speed Limit (kt)	Navigation Specification	RNP	REMARKS
010	AV442	N 37°44'19.2993" E 023°46'04.4922"	IF	-	-	-	-	+4000	-	RNP APCH	1.0	IF
020	AV441	N 37°48'19.4245" E 023°49'51.7695"	CF	-	5.0	032 (037.0)	-	+3200	-185	-	-	FAF
030	RW03R	N 37°55'33.3551" E 023°56'43.8229"	CF	Y	9.0	032 (037.0)	-	-	-	-	-	
MISSED APCH												
Sequence Number	Waypoint Identifier	Coordinates	Path Terminator	Fly Over	Distance (NM)	Course °M (°T)	Turn Direction	Altitude (FT/FL)	Speed Limit (kt)	Navigation Specification	RNP	REMARKS
010	AV445	N 37°59'03.8745" E 024°00'04.2363"	CF	-	4.4	032 (037.0)	-	-	-210	RNP APCH	1.0	
020	AV447	N 37°58'28.2038" E 024°10'20.9522"	TF	-	8.1	089 (094.1)	-	-	-	RNP APCH	1.0	
030	KEA	N 37°33'25.7900" E 024°17'55.3200"	TF	-	25.7	161 (166.5)	-	@5000	-	RNP APCH	1.0	
RNAV HOLDING IDENTIFICATION												
Sequence Number	Waypoint Identifier	Coordinates	Path Terminator	Fly Over	Distance (NM)	Course °M (°T)	Turn Direction	Altitude (FT/FL)	Speed Limit (kt)	Navigation Specification	RNP	REMARKS
010	KEA	N 37°33'25.7900" E 024°17'55.3200"	HM	Y	-	335 (340.2)	R	+5000	-230	RNAV 1	1.0	